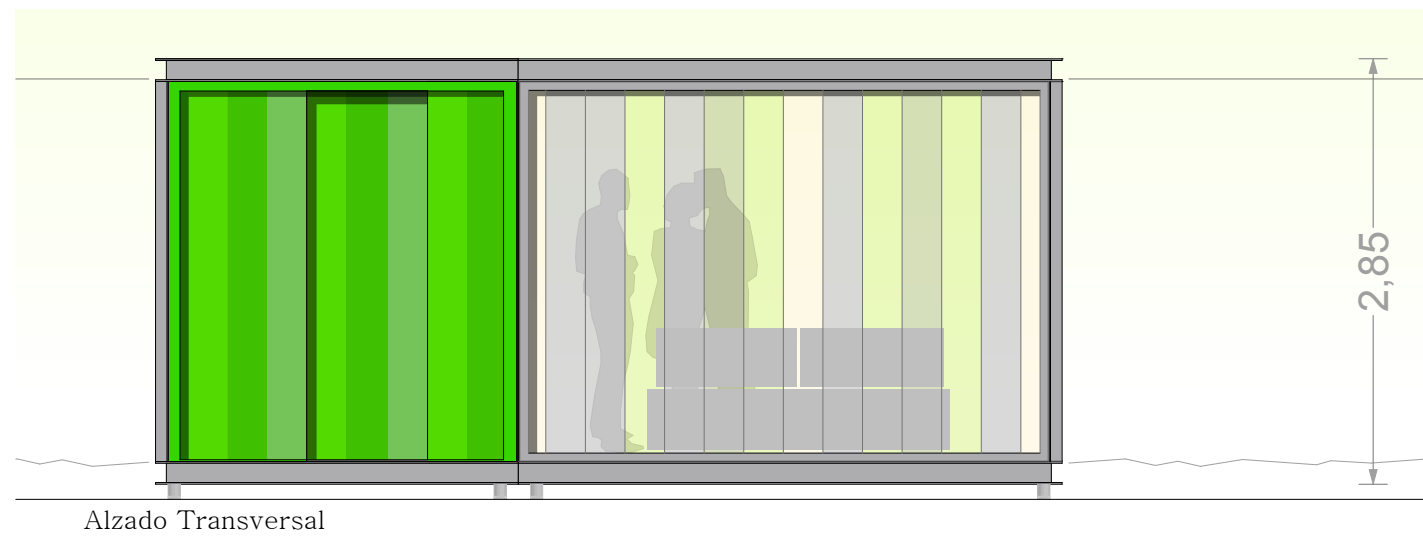
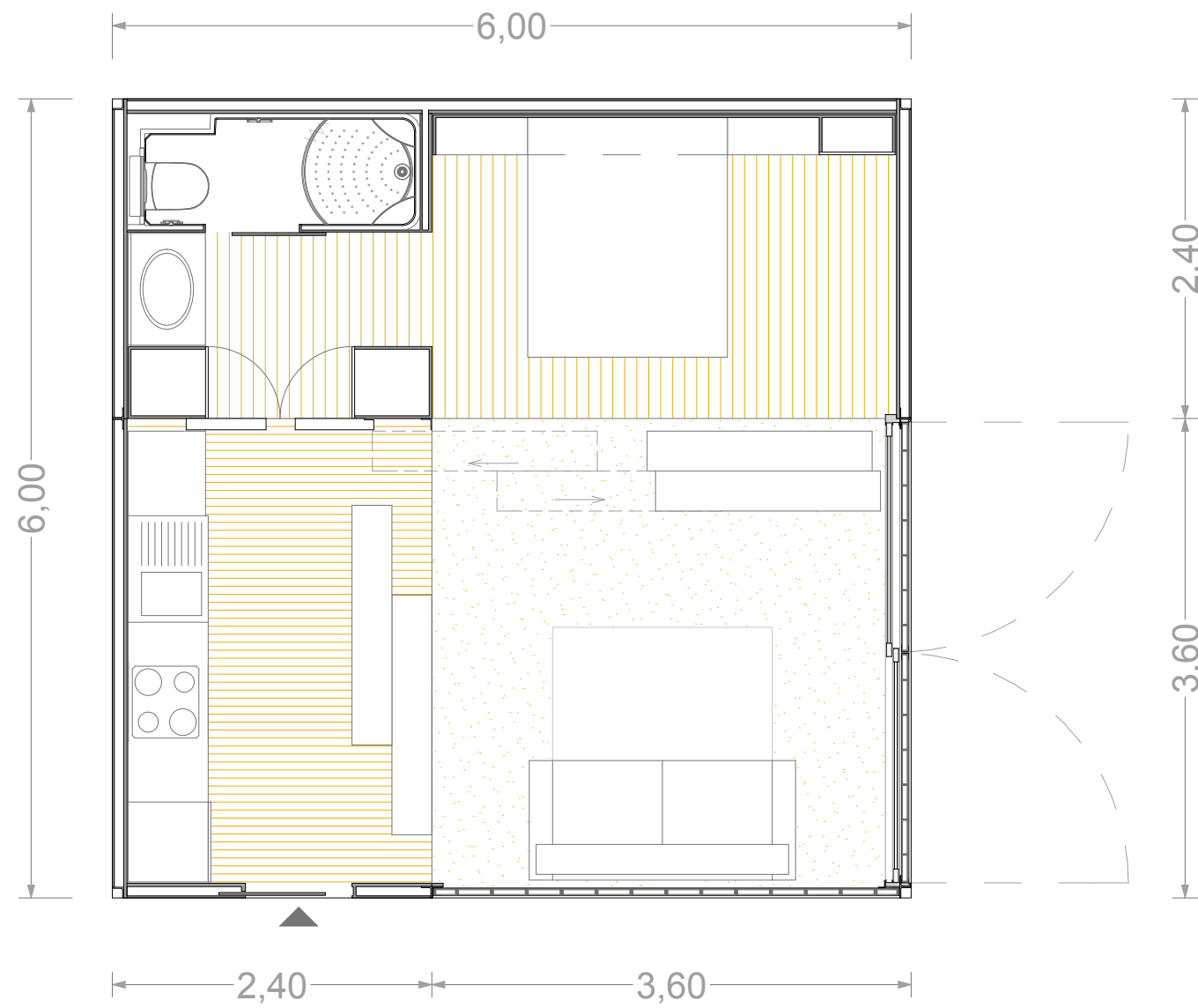
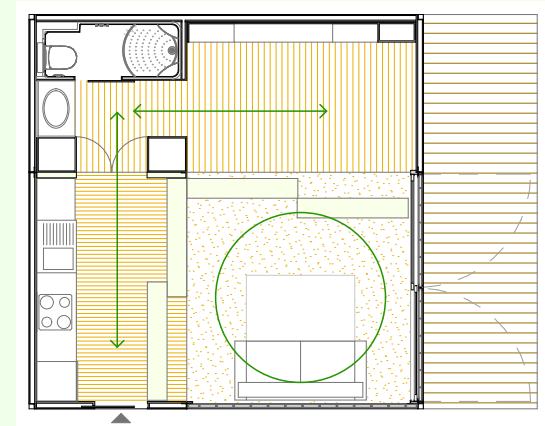
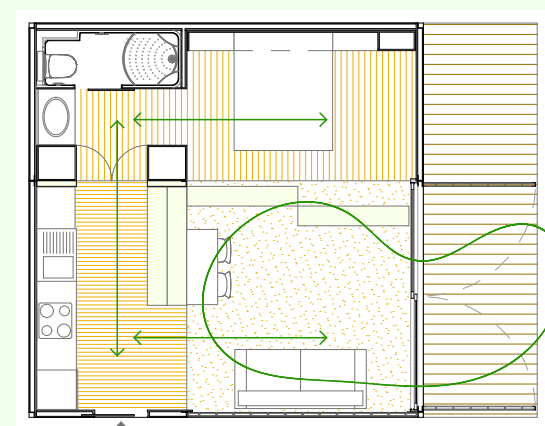
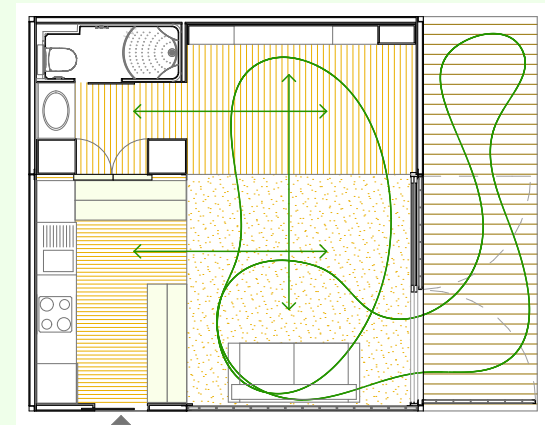
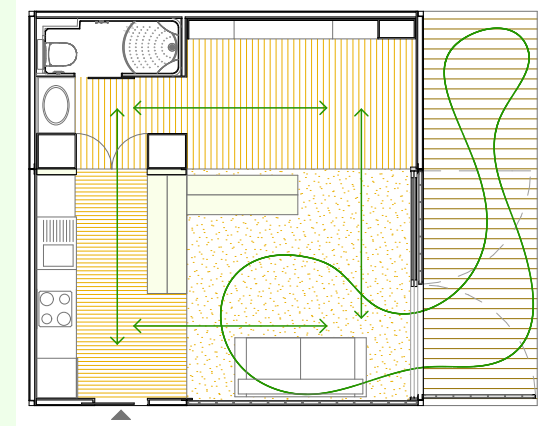
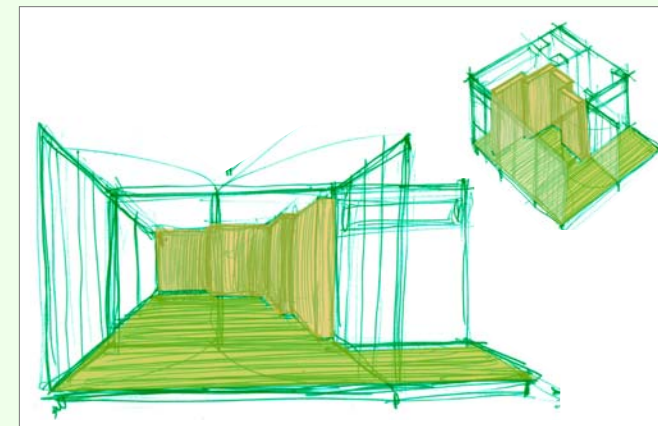
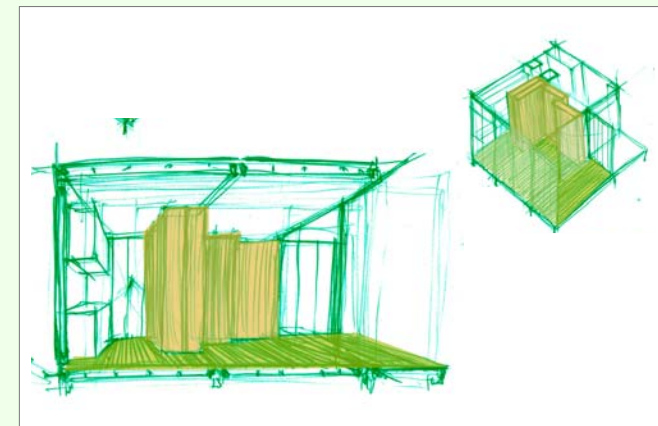
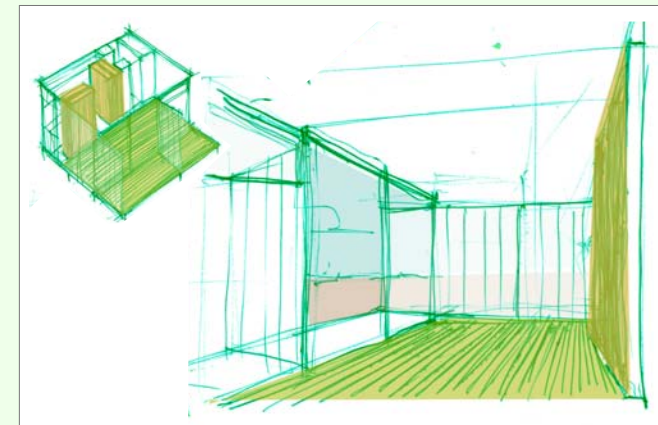
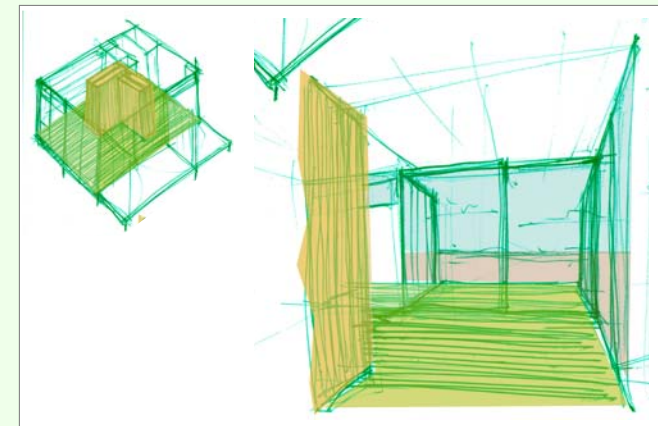


Módulo 6x6  
E: 1/50



Relaciones Espaciales

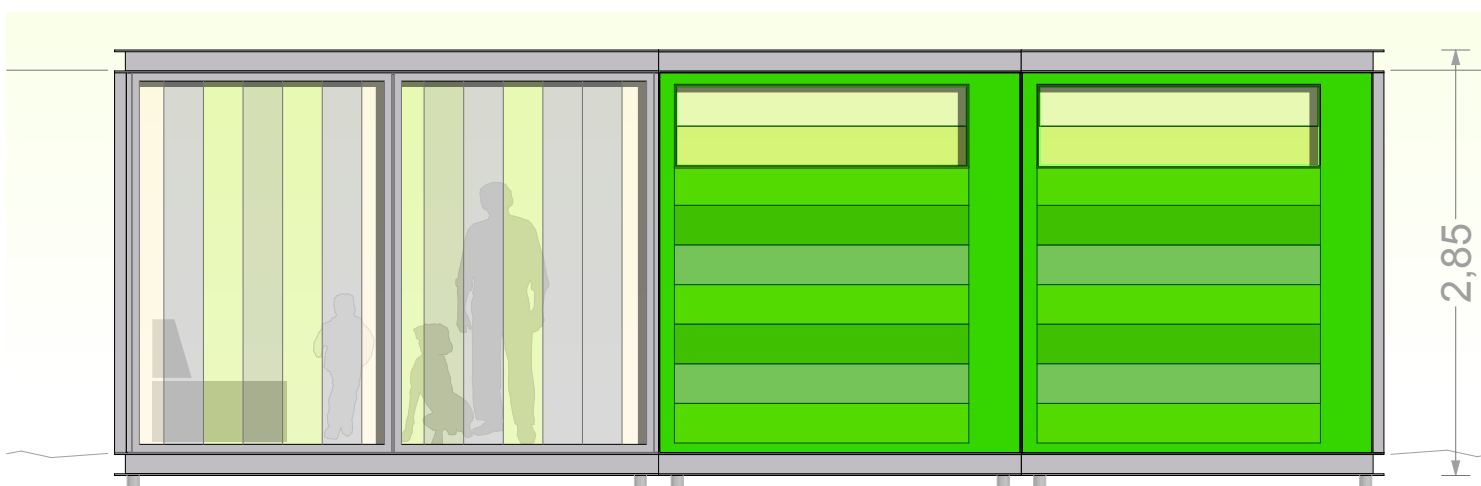
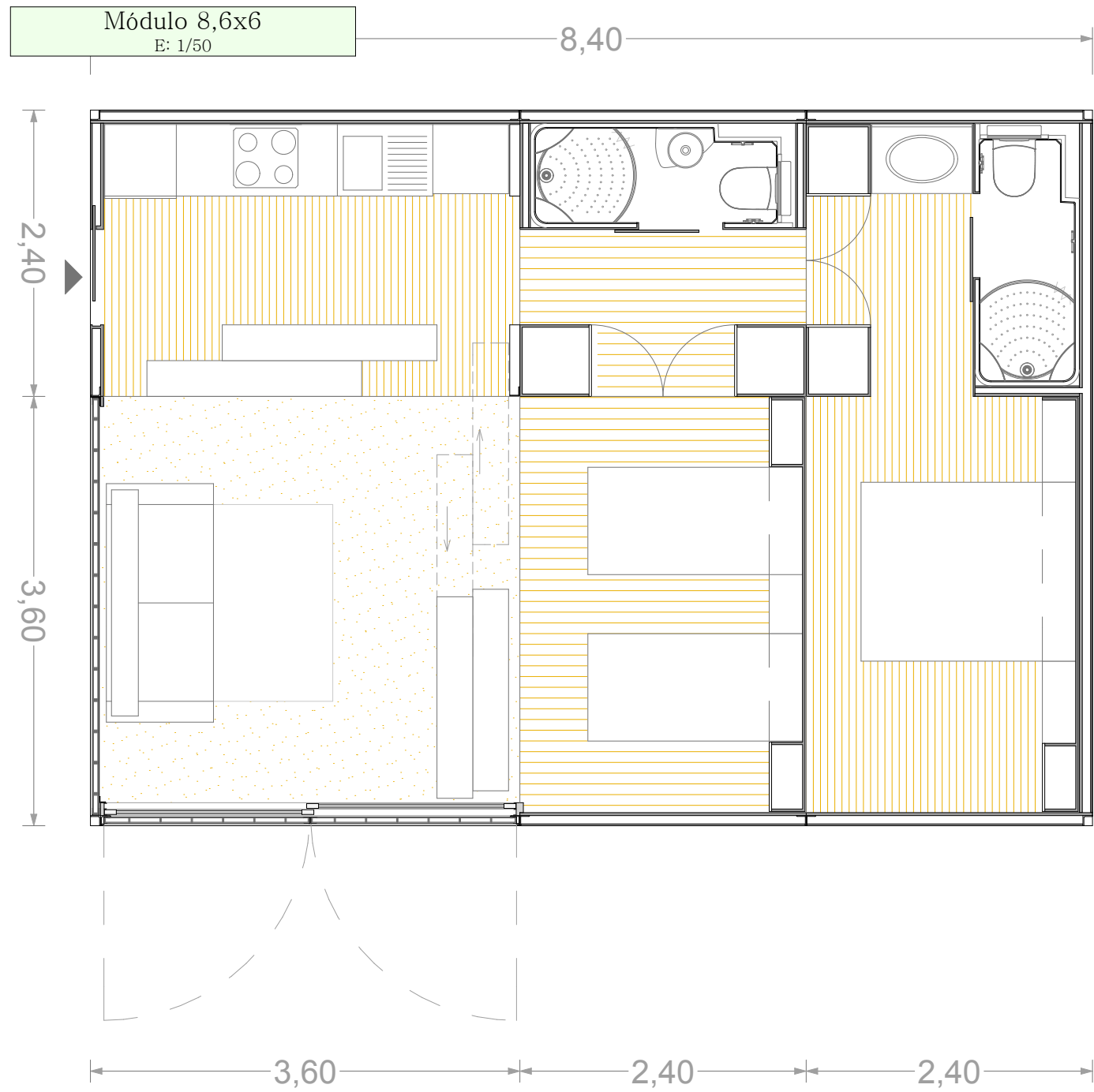


ANÁLISIS

PROPUESTA GENERAL

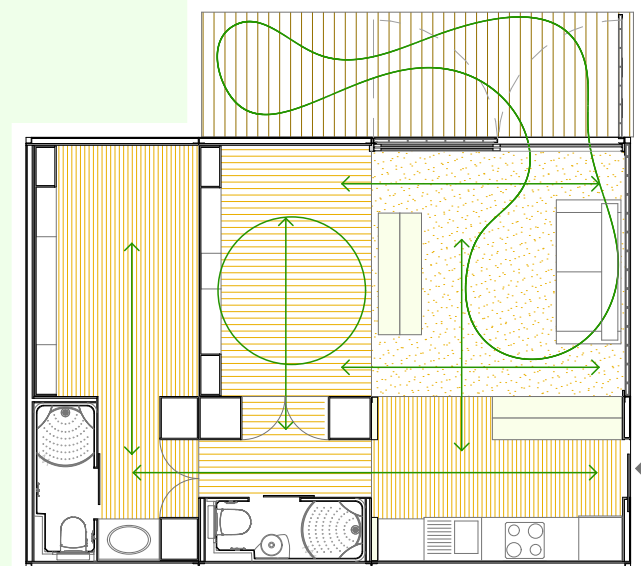
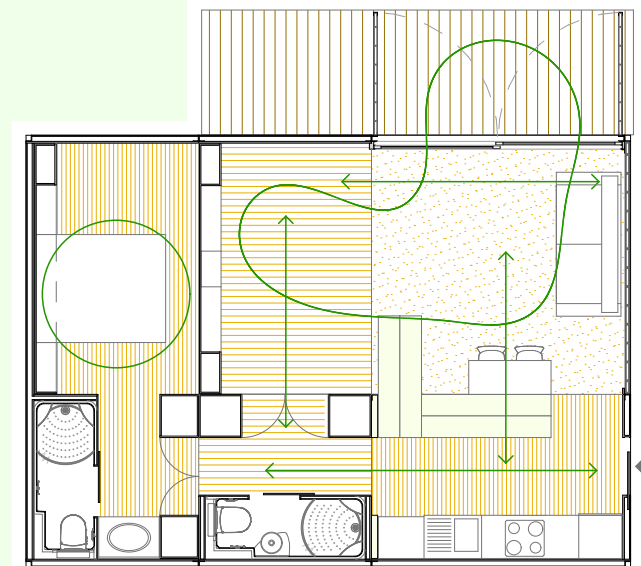
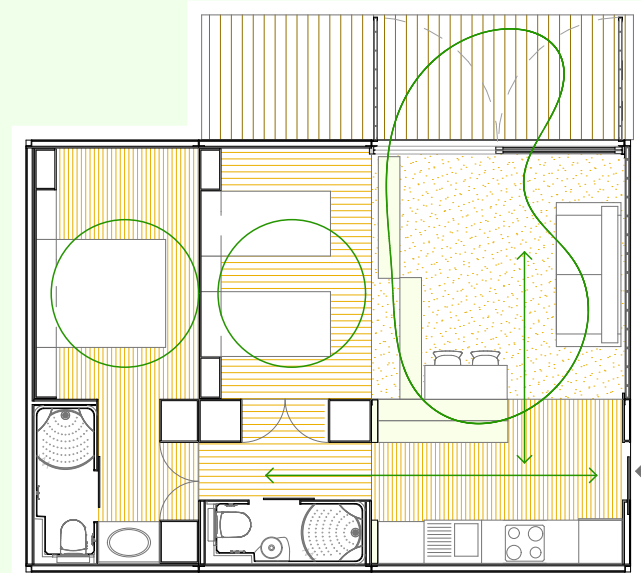
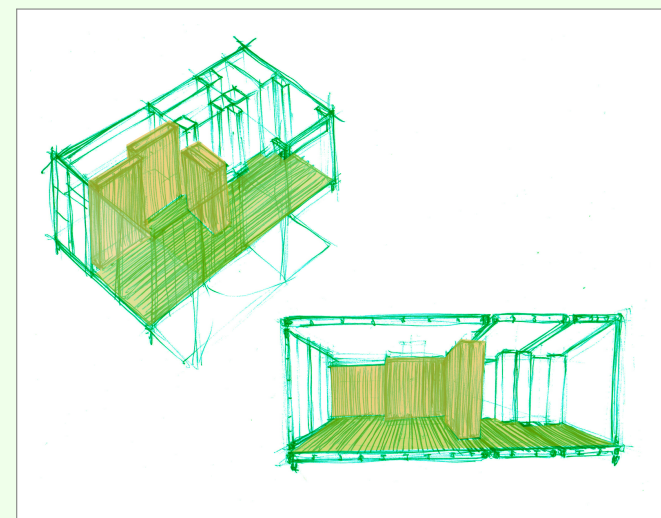
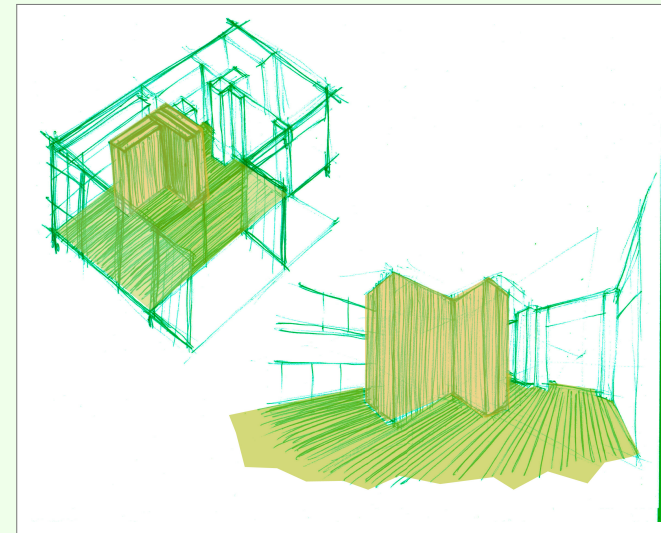
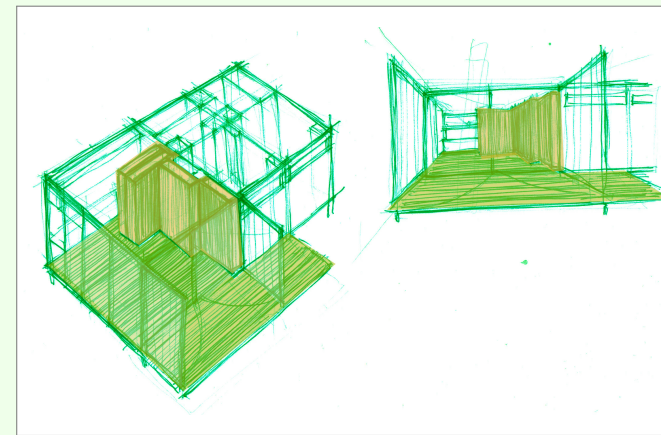
PROPUESTA / Módulo

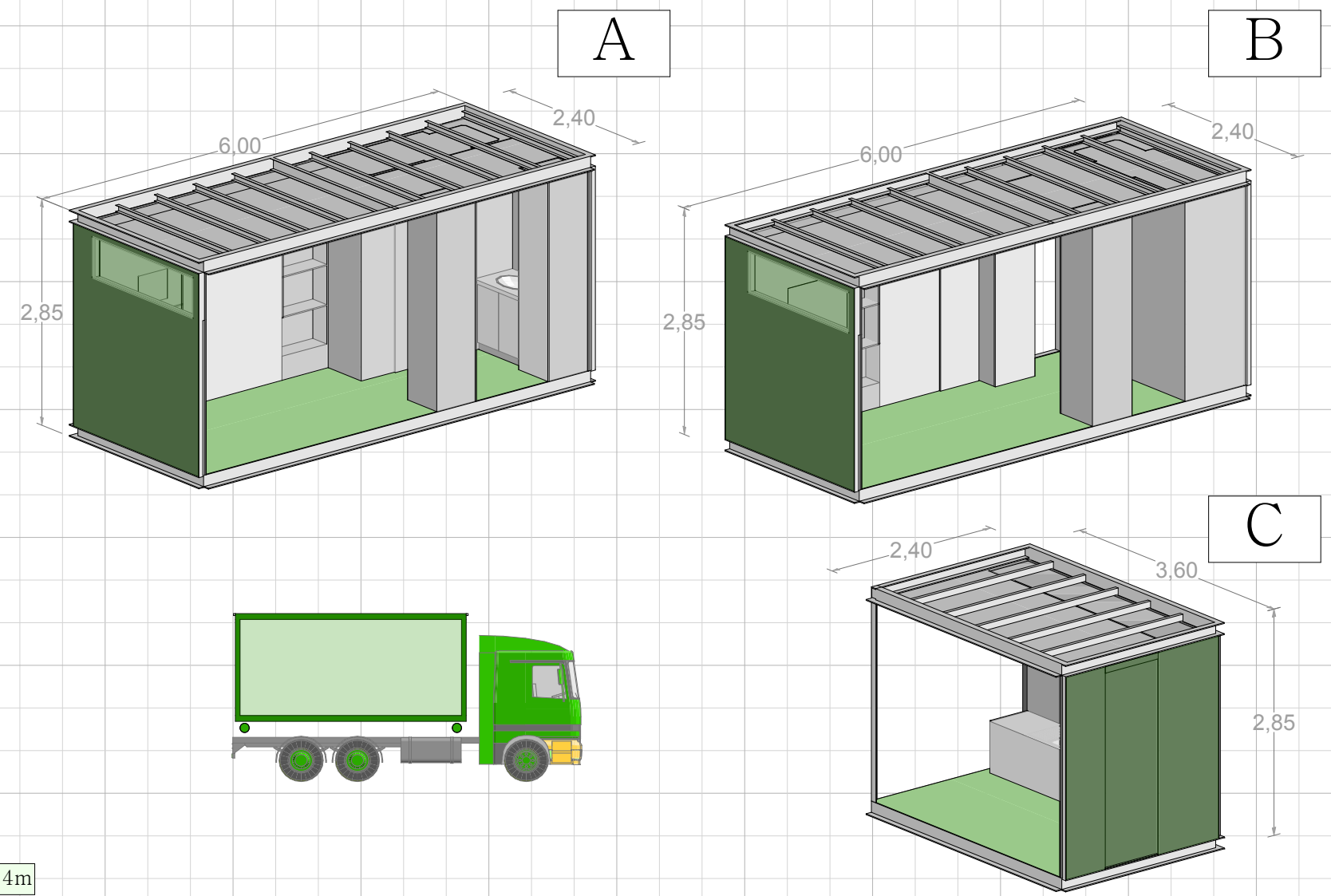
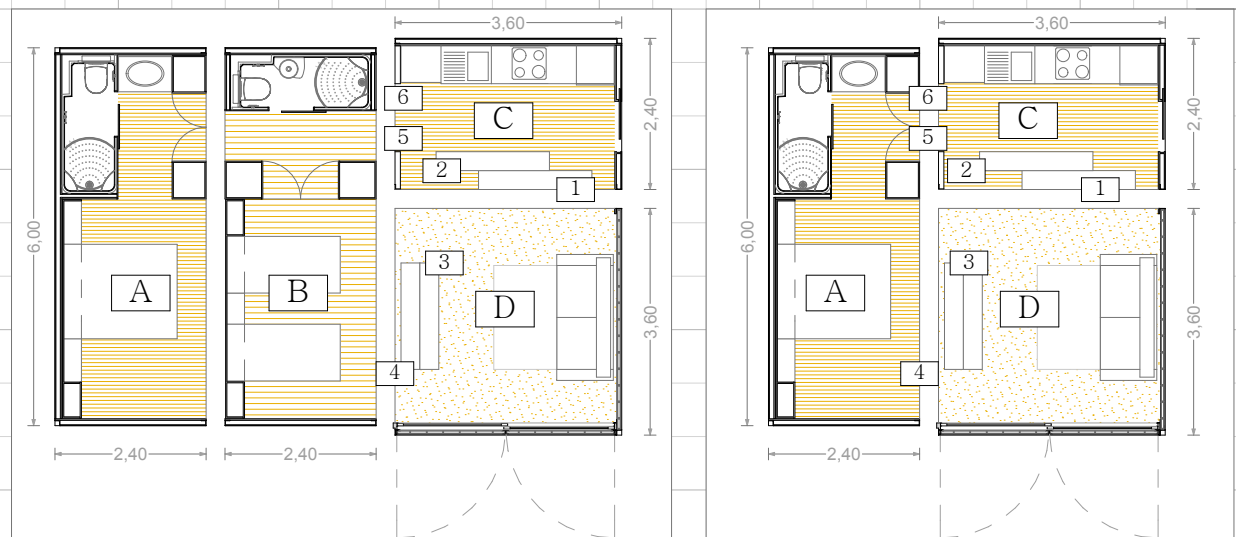
TÉCNICA



Alzado longitudinal

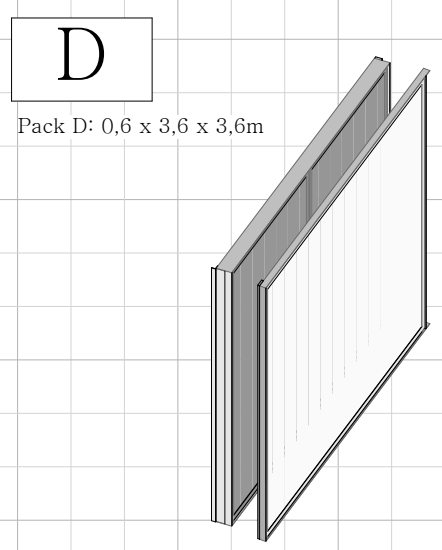
Relaciones Espaciales



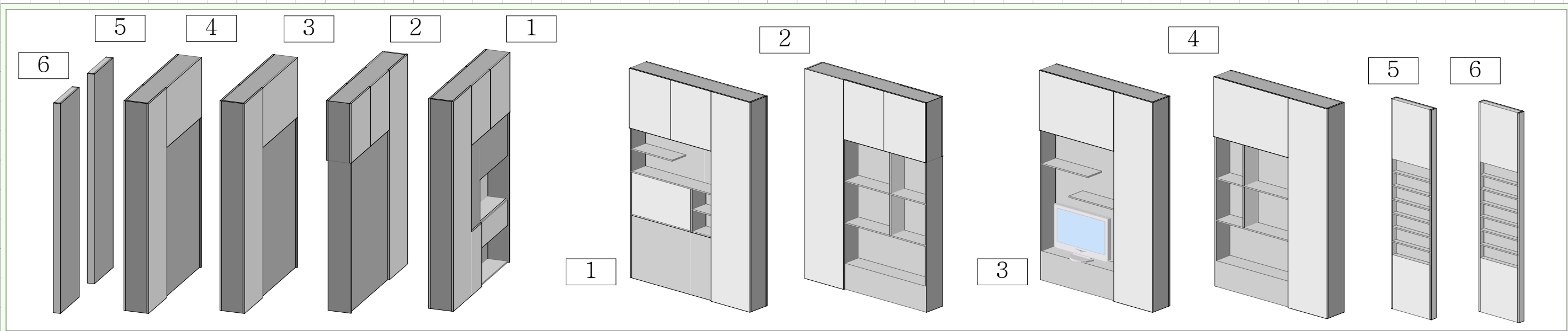


Catálogo  
Pedido y Transporte

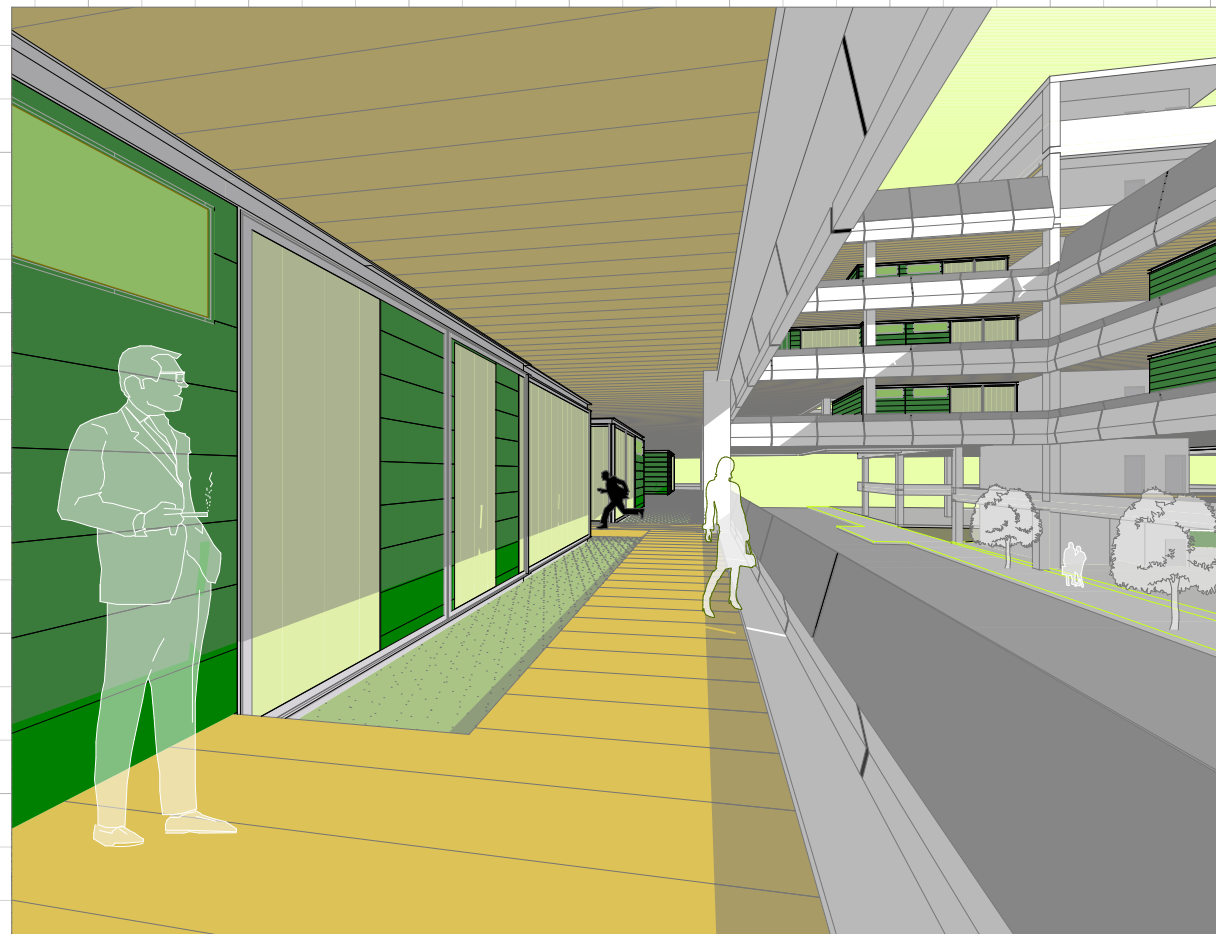
- A** Módulo Habitación - Baño
  - B** Módulo Habitación - Baño (opcional)
  - C** Módulo Cocina
  - D** Módulo Salón
- |                              |                               |
|------------------------------|-------------------------------|
| <b>1</b> Mueble Mesa Comedor | <b>4</b> Mueble Estantería    |
| <b>2</b> Mueble Estantería   | <b>5</b> Estantería corredera |
| <b>3</b> Mueble TV           | <b>6</b> Estantería corredera |



Máx volumen transportable: 2,4 x 6 x 4m



Muebles móviles



Perspectivas

