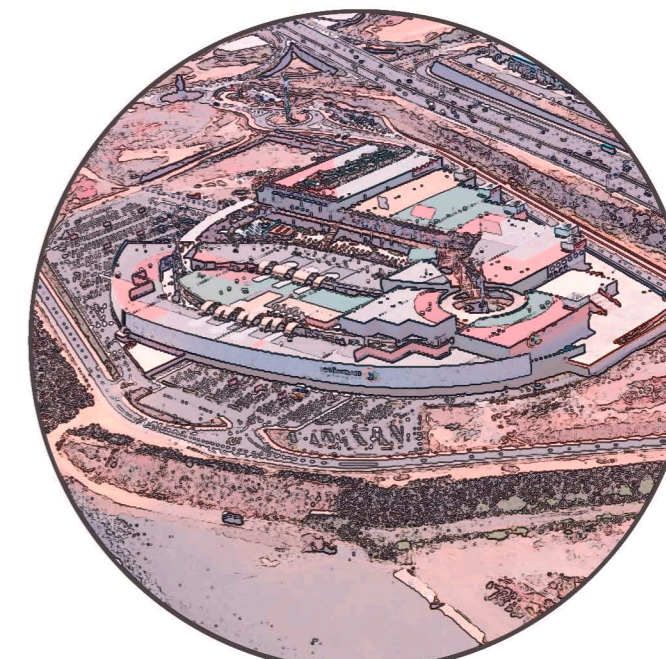


OC LAS TERRAZAS



23 44 09

AUTOPIAS "GO-I"



23 42 71

INVERNADEROS

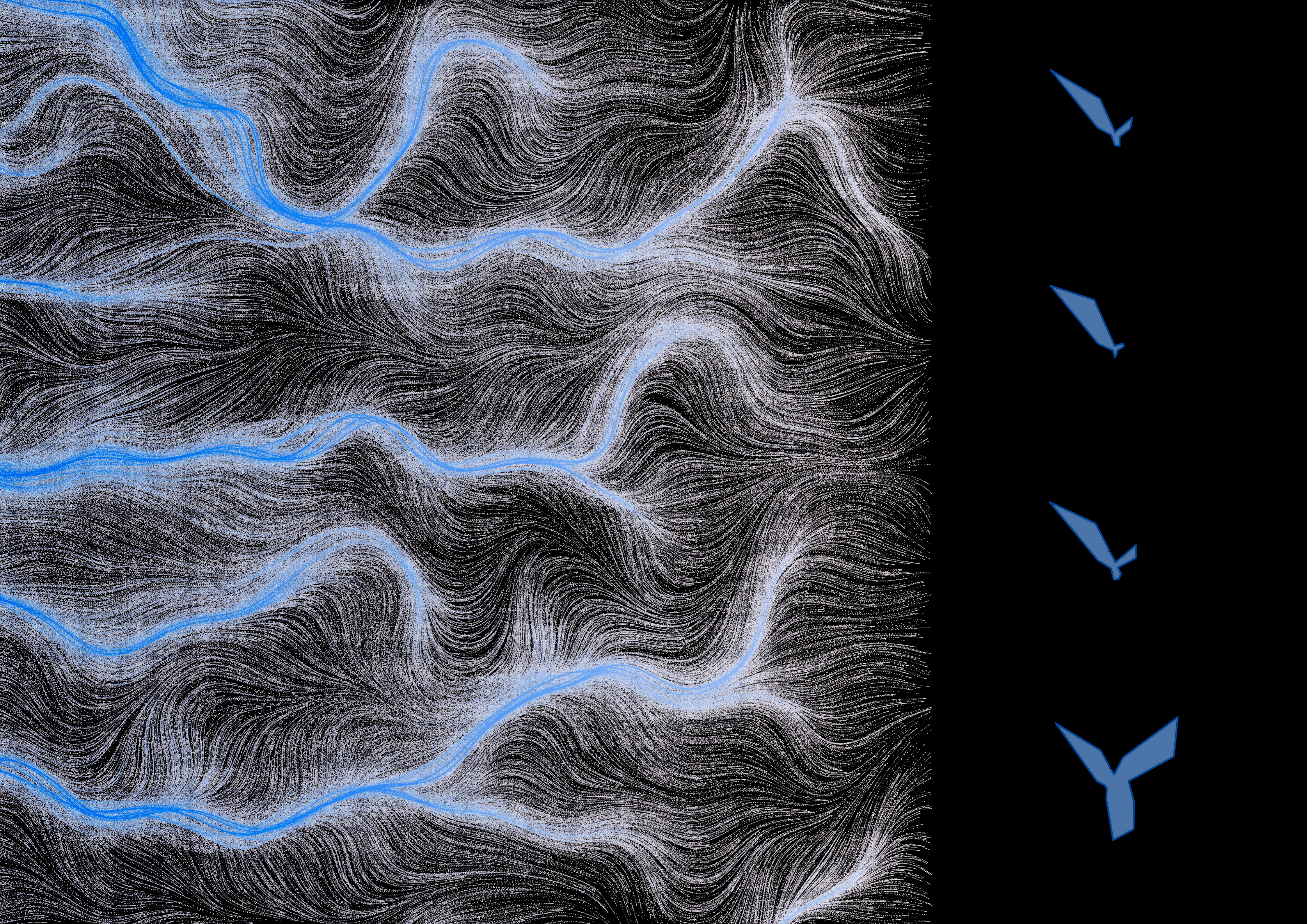


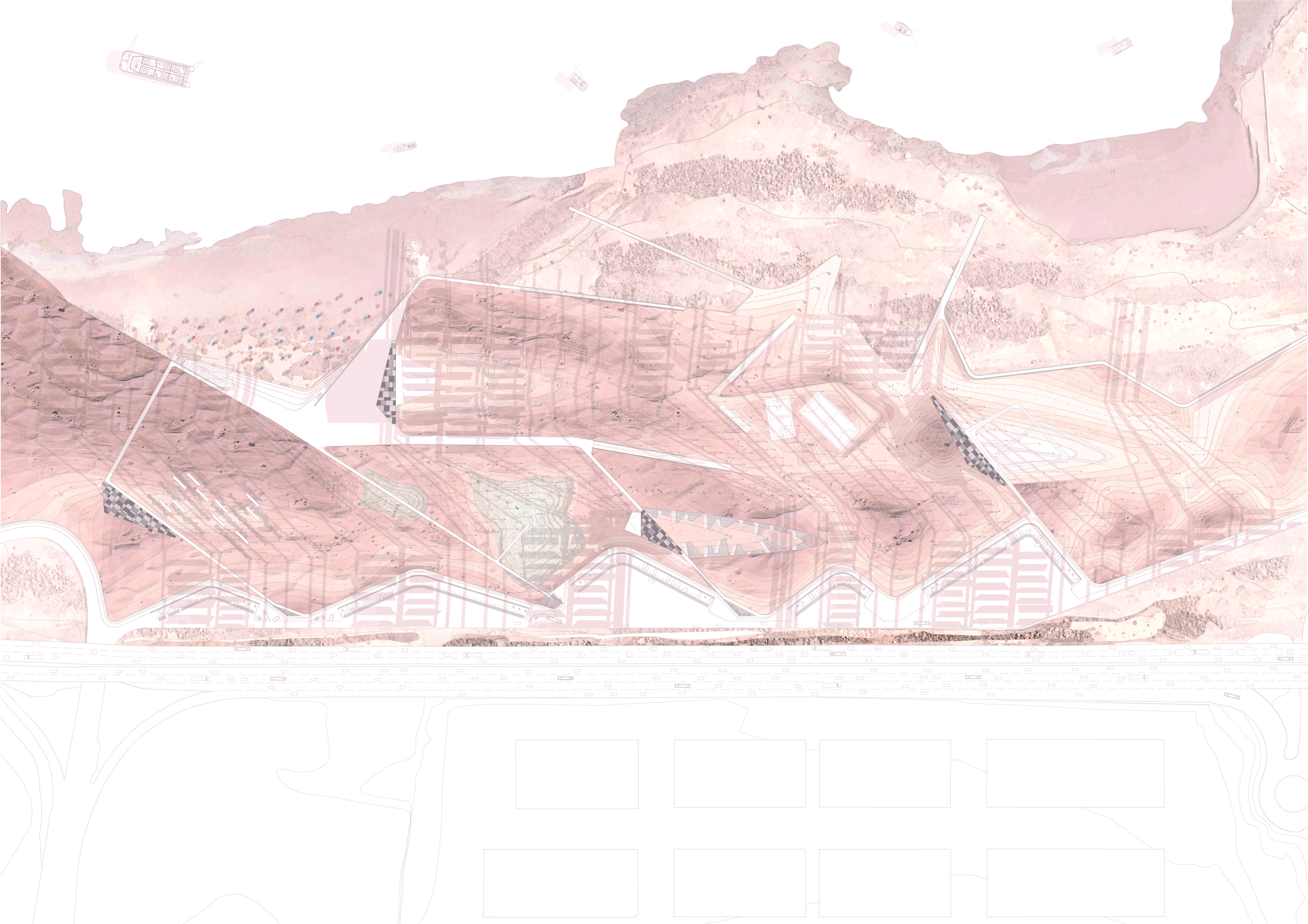
23 41 71

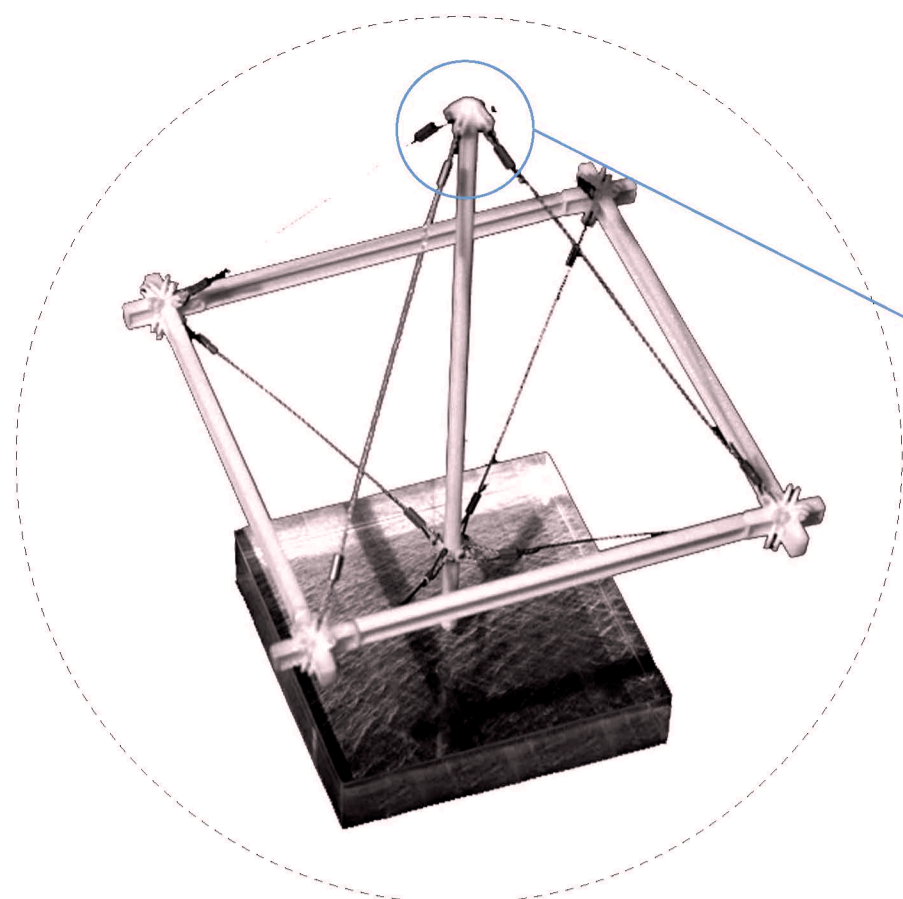
CASA MIGUEL MARTIN



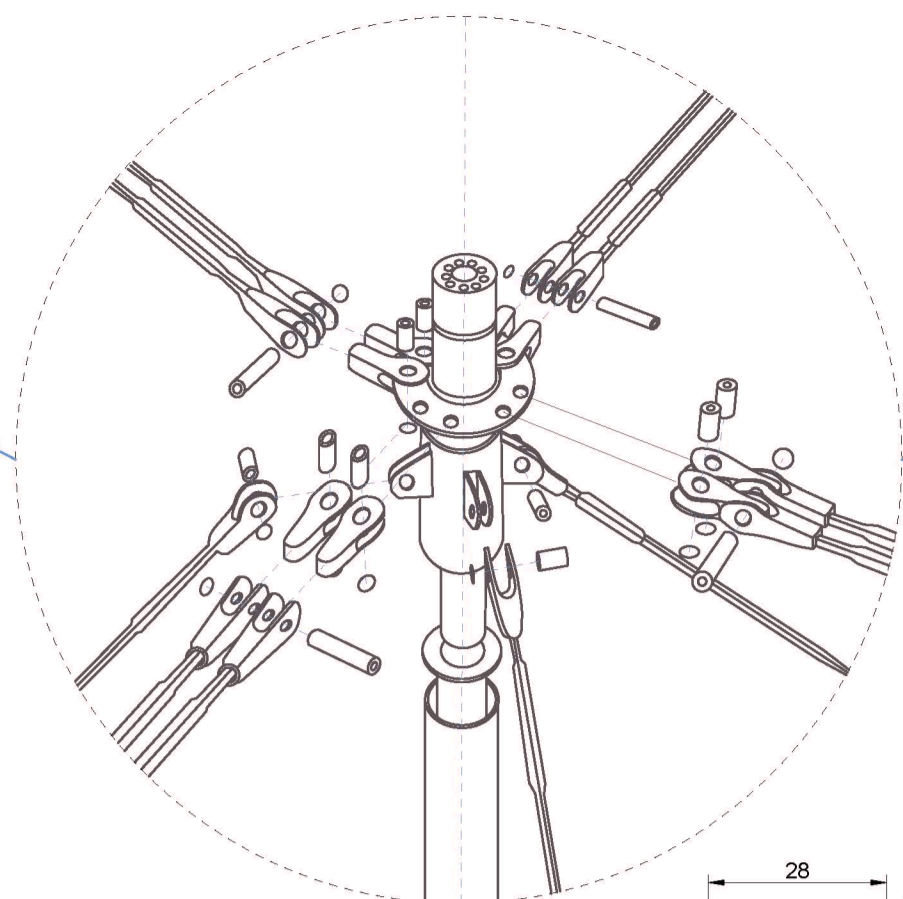
23 40 73



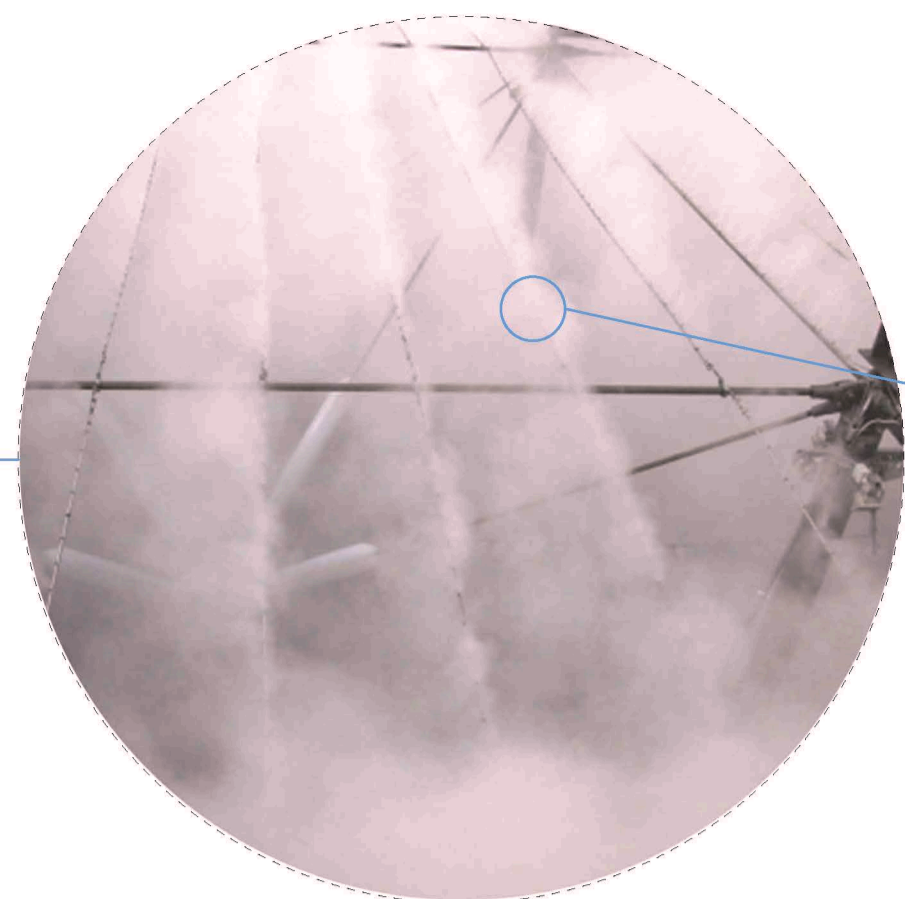




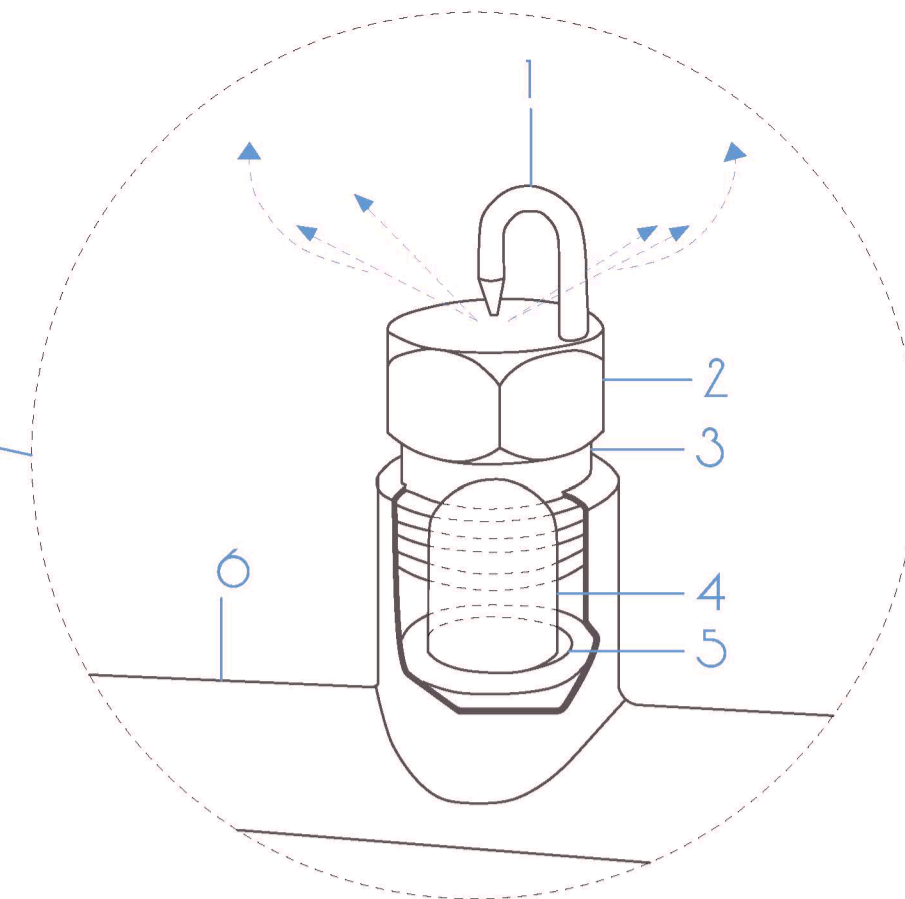
SOPORTE TENSEGRITY



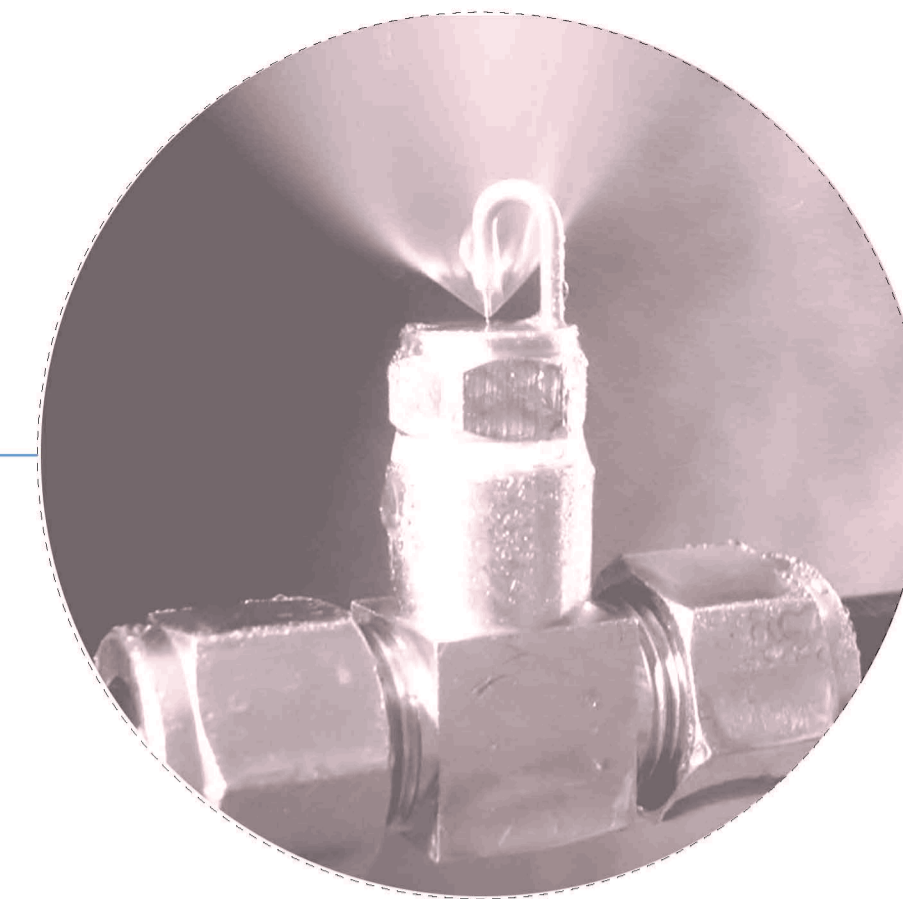
NUDO SUPERIOR



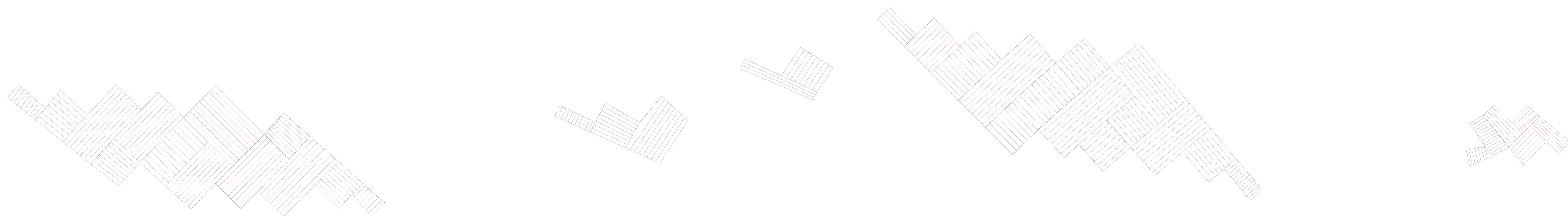
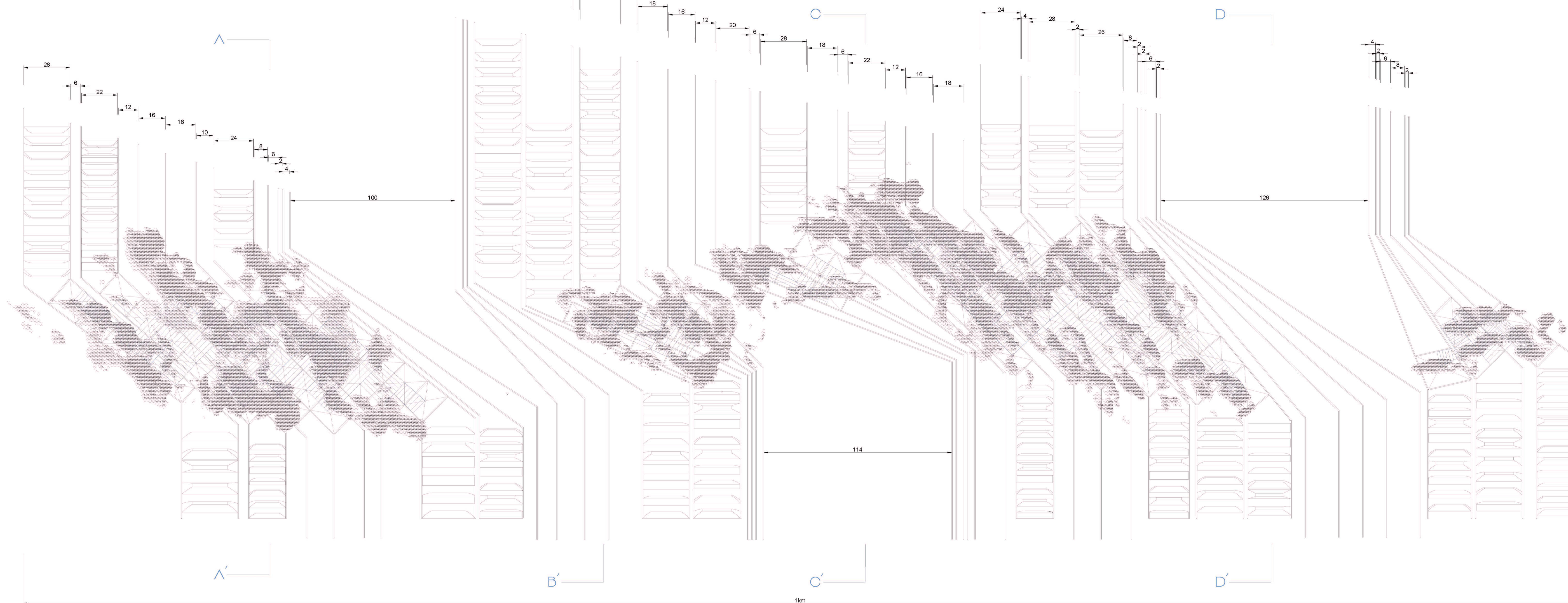
RED DE ASPERSORES



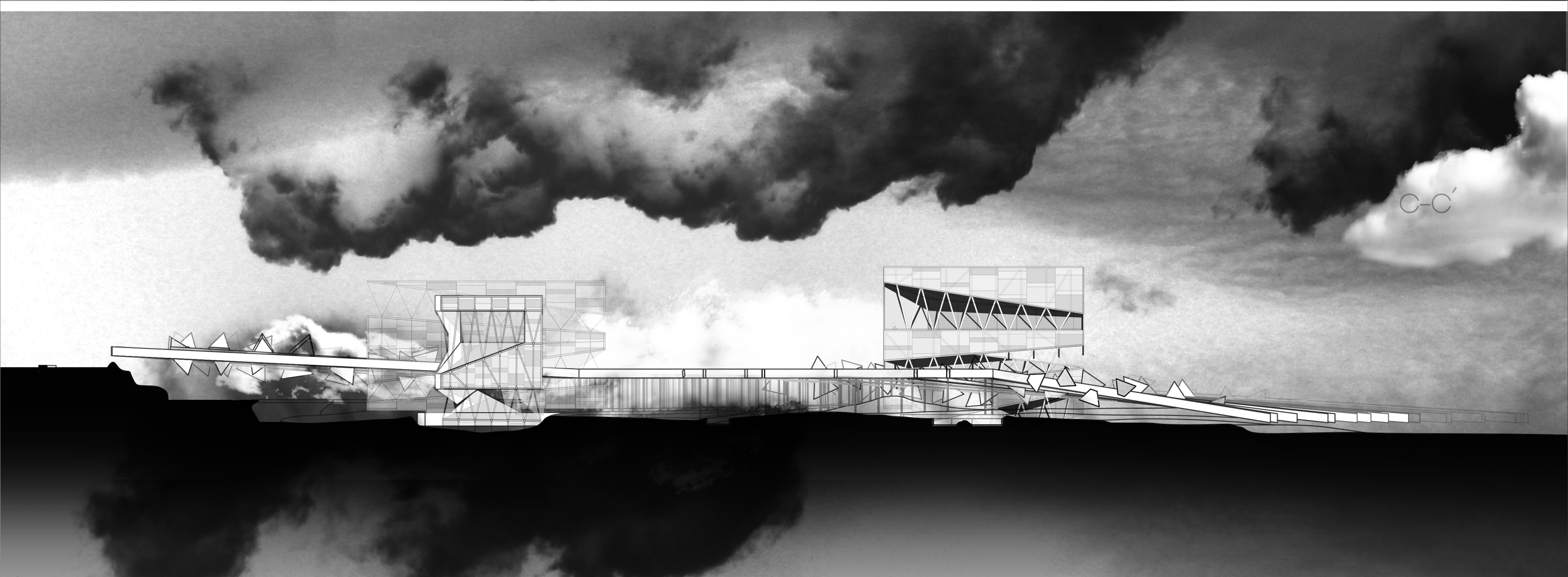
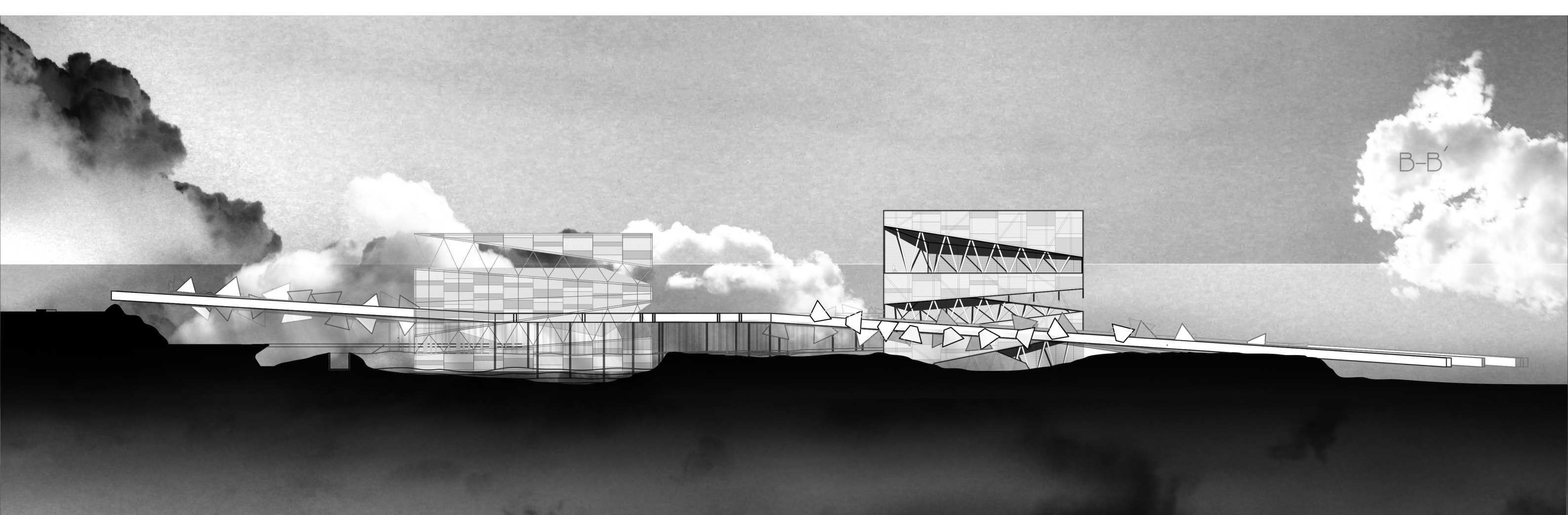
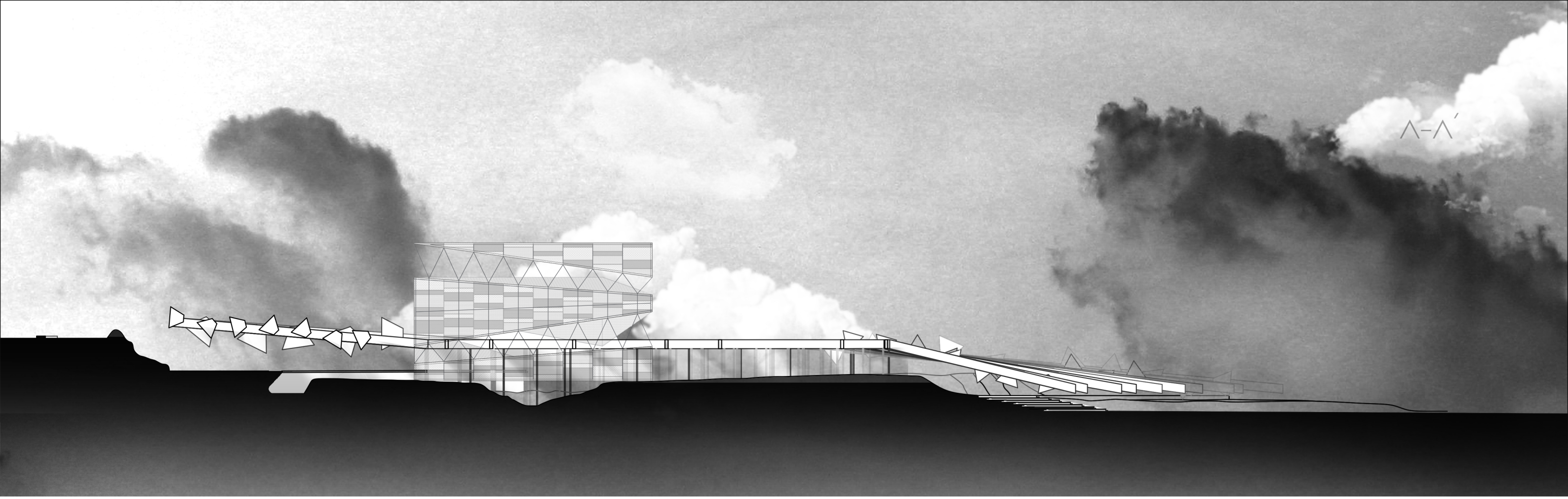
ASPERSOR DE IMPACTO

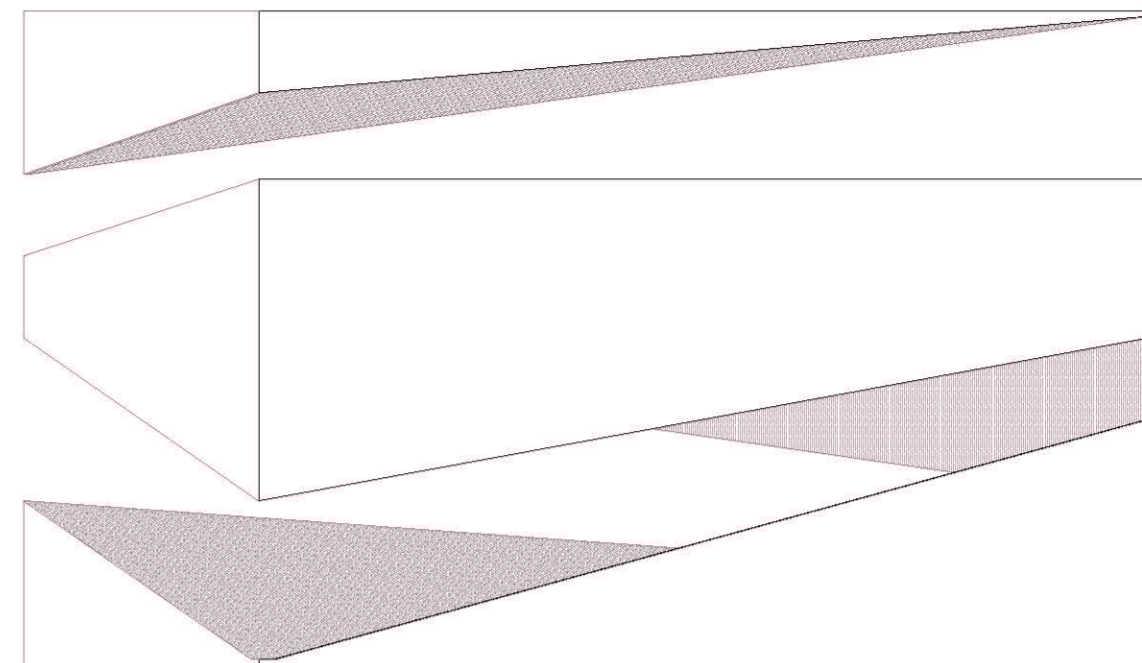
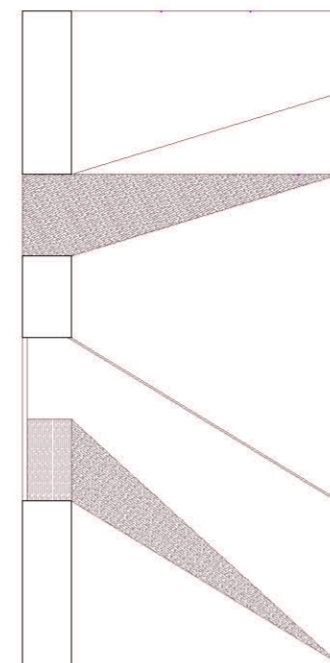
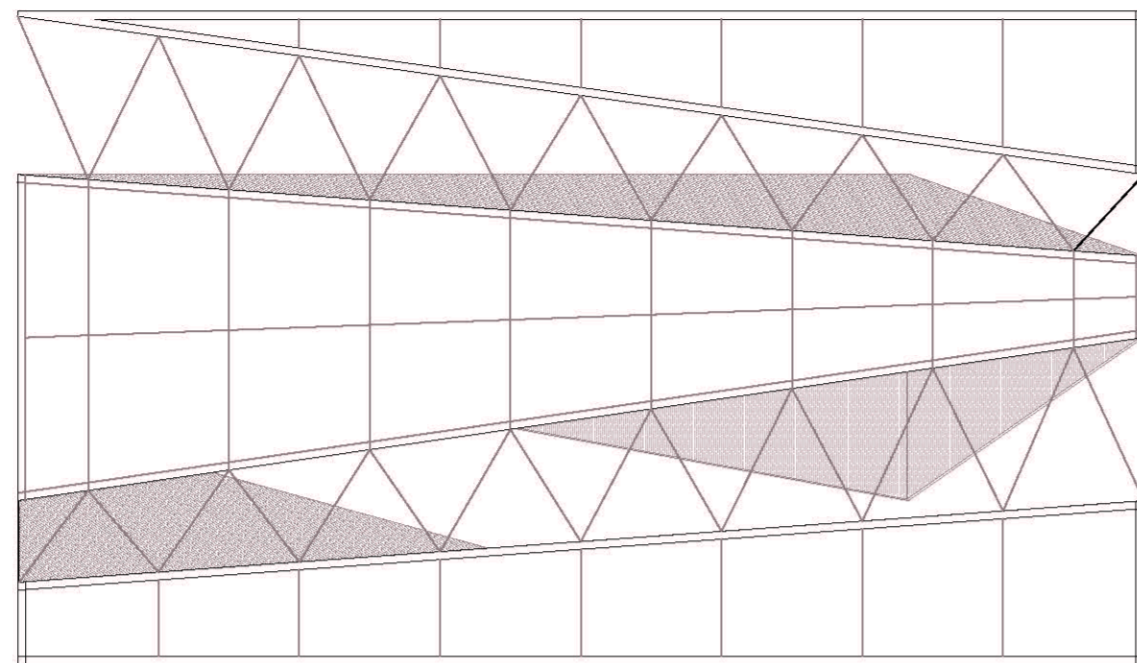
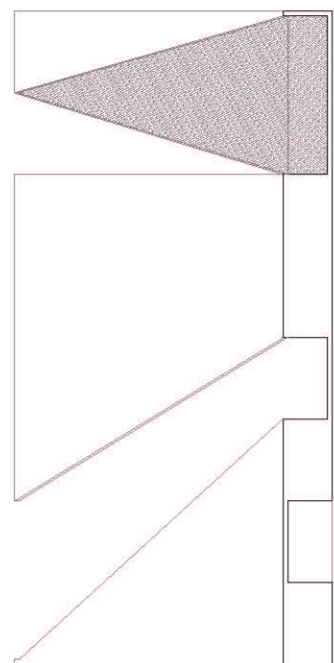


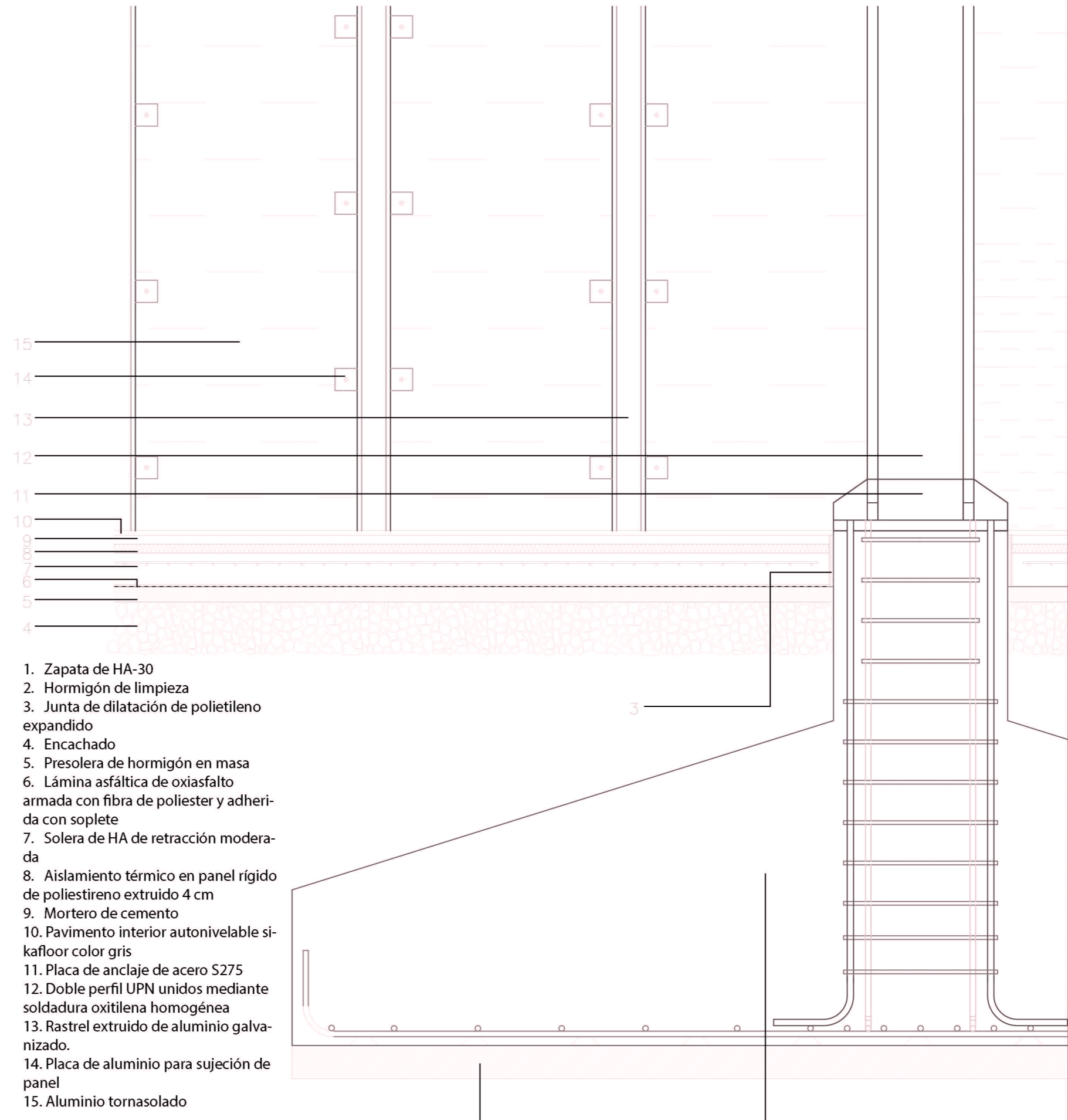
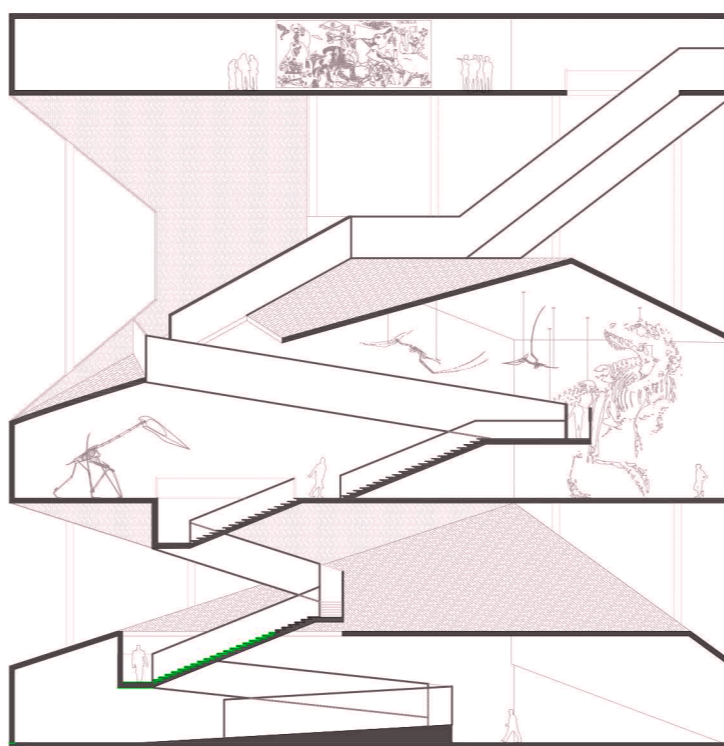
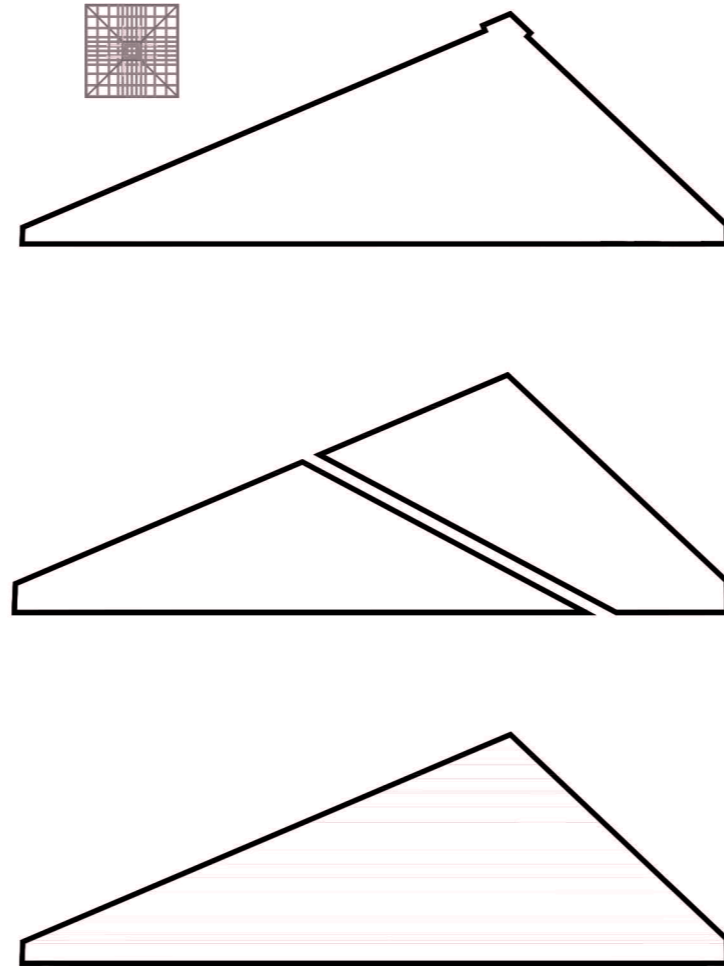
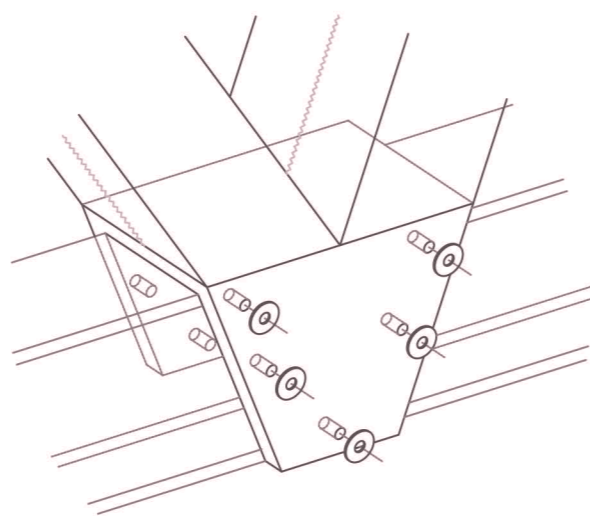
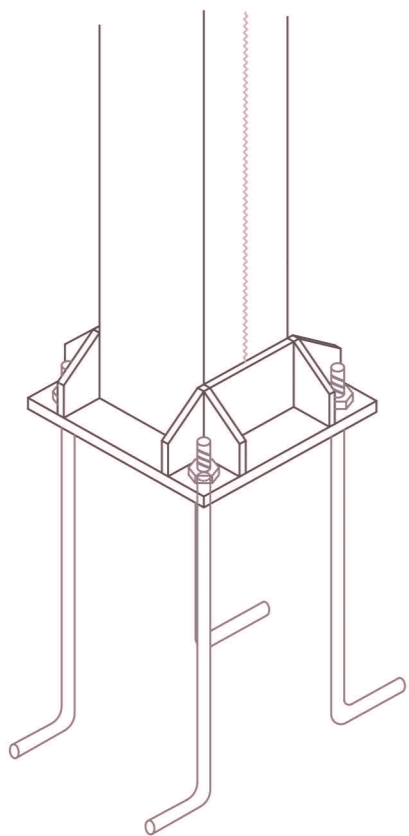
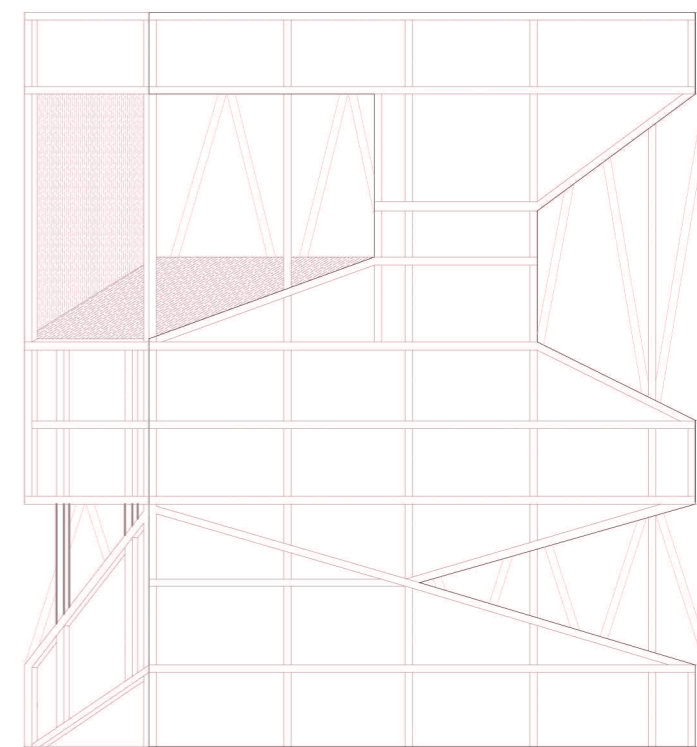
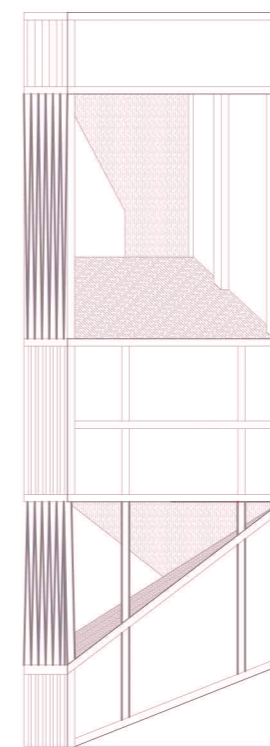
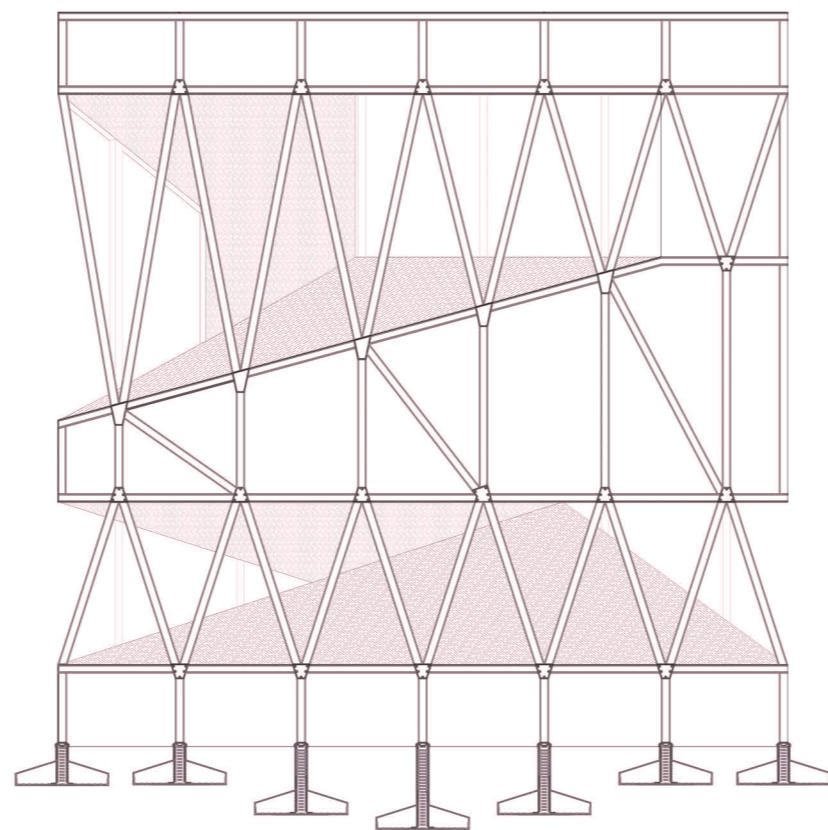
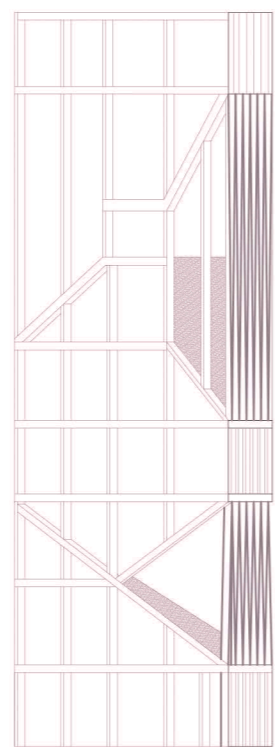
- 1 PERNO DE IMPACTO
- 2 BOQUILLA
- 3 ADAPTADOR
- 4 FILTRO
- 5 ANILLO DE SELLADO
- 6 TUBO DE ACERO INOXIDABLE



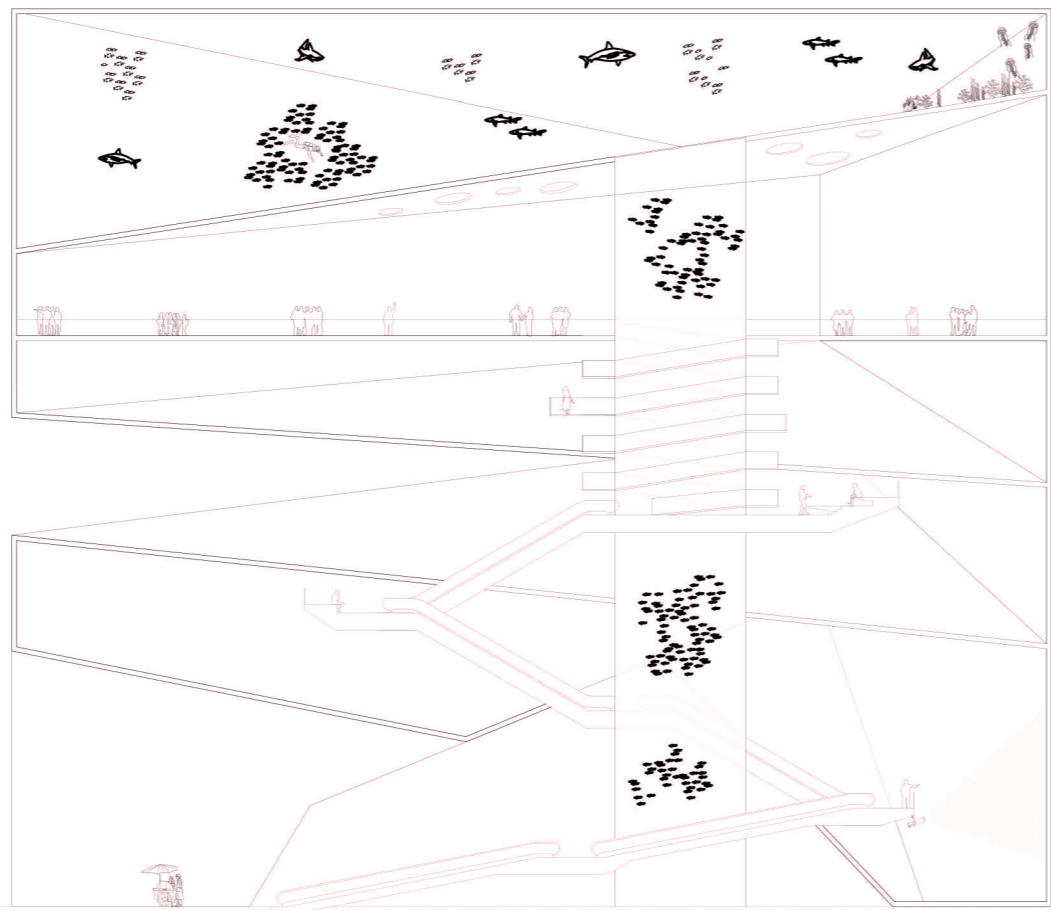
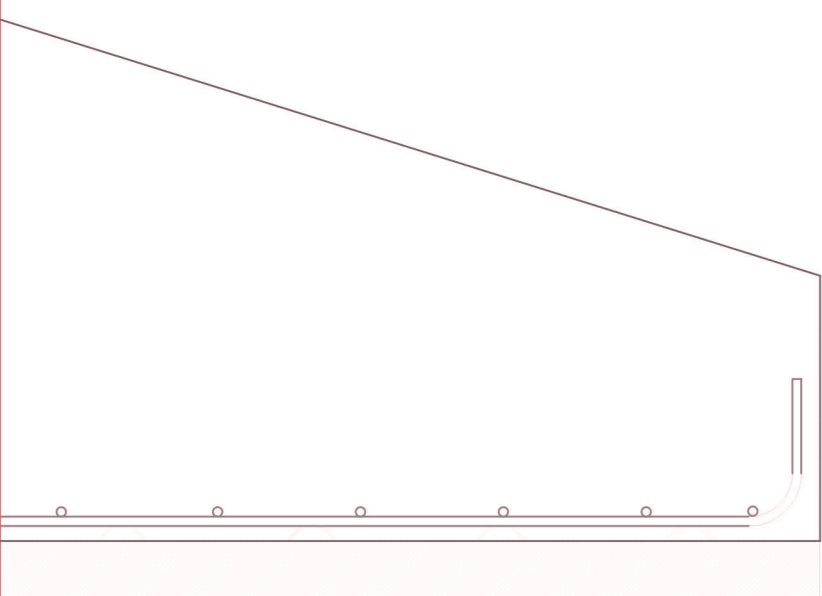
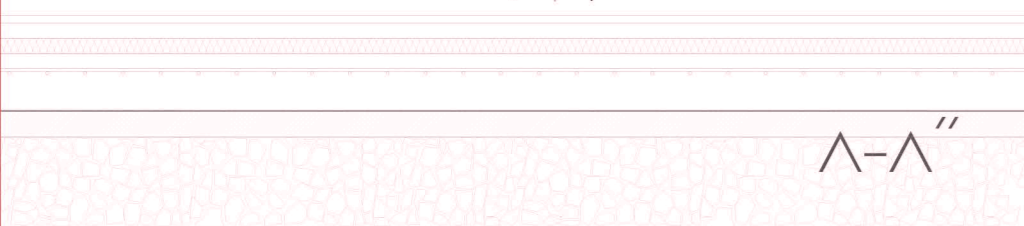
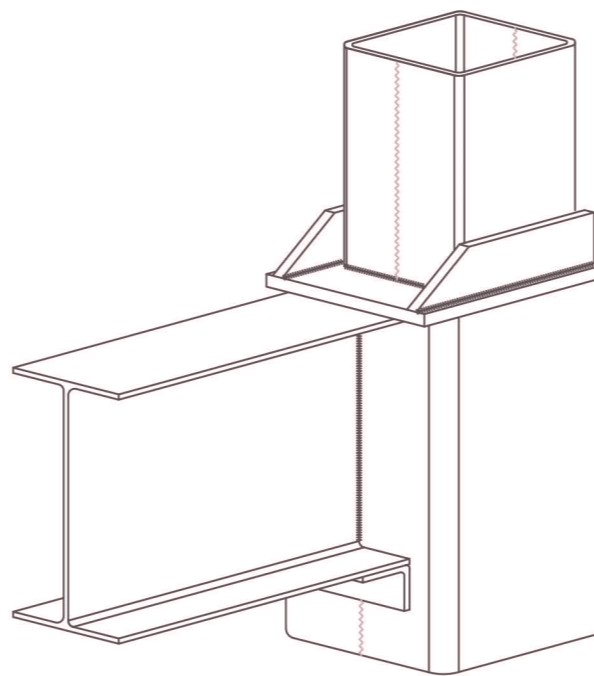
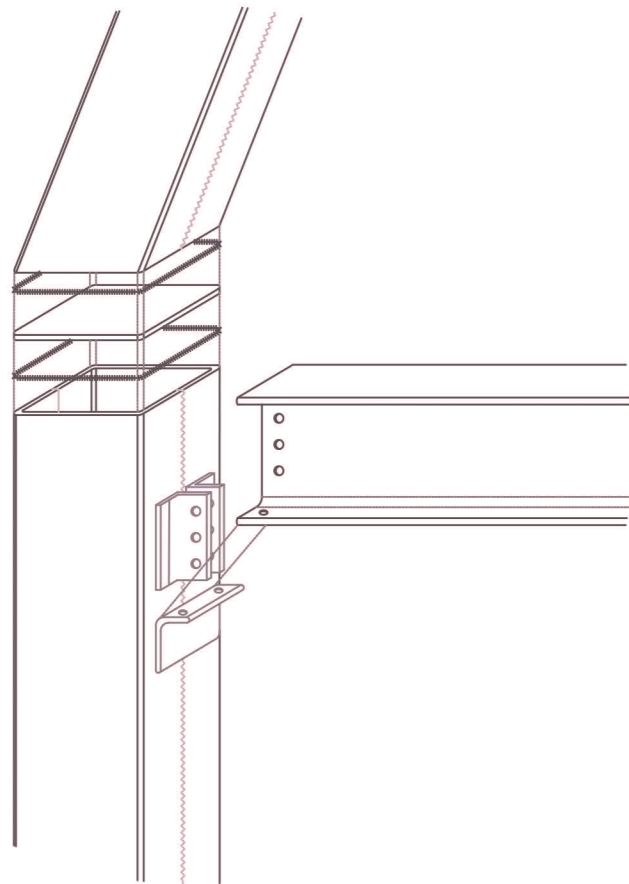
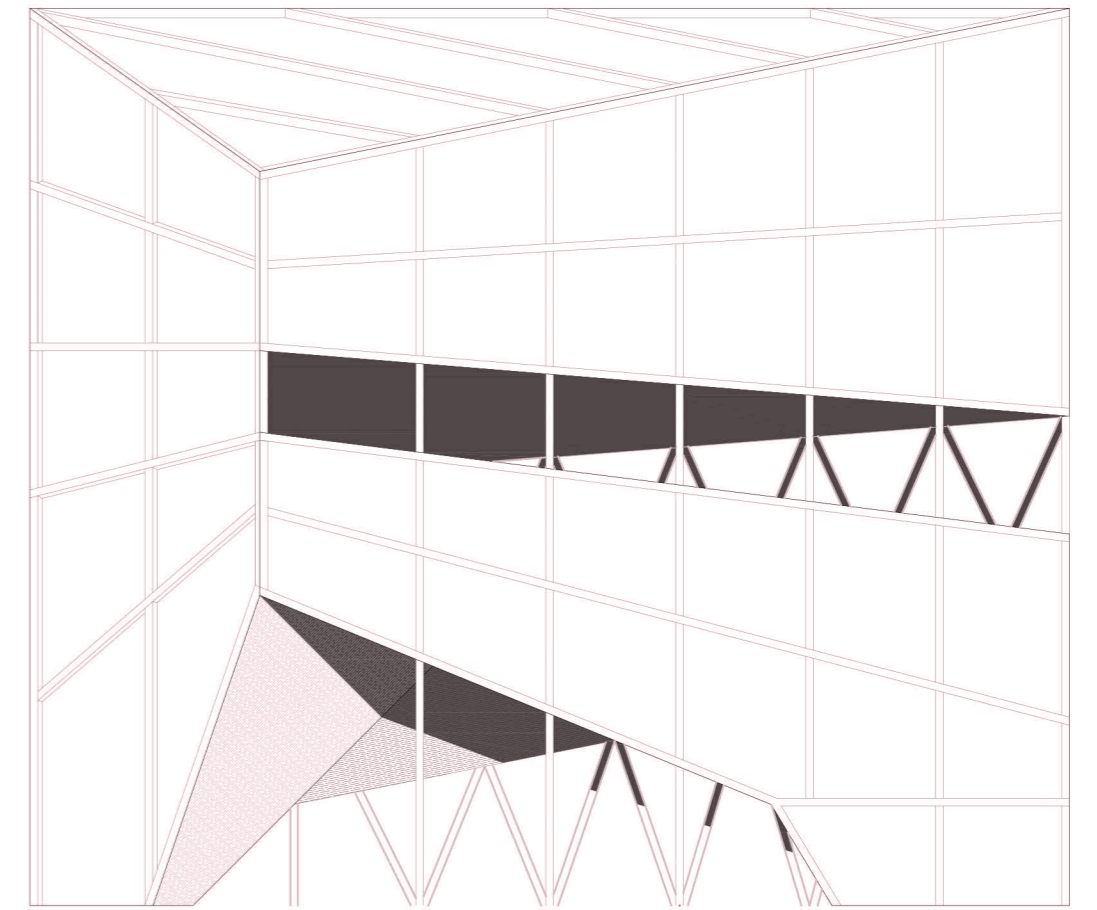
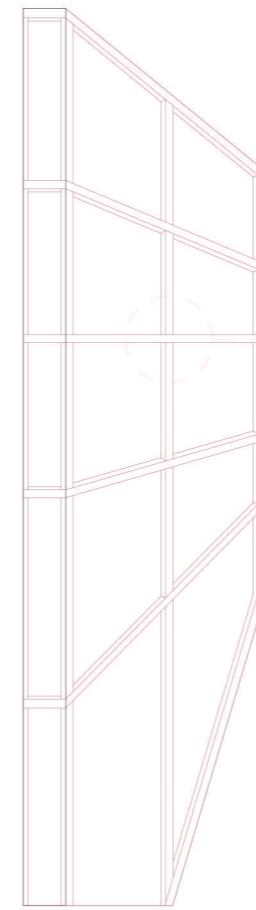
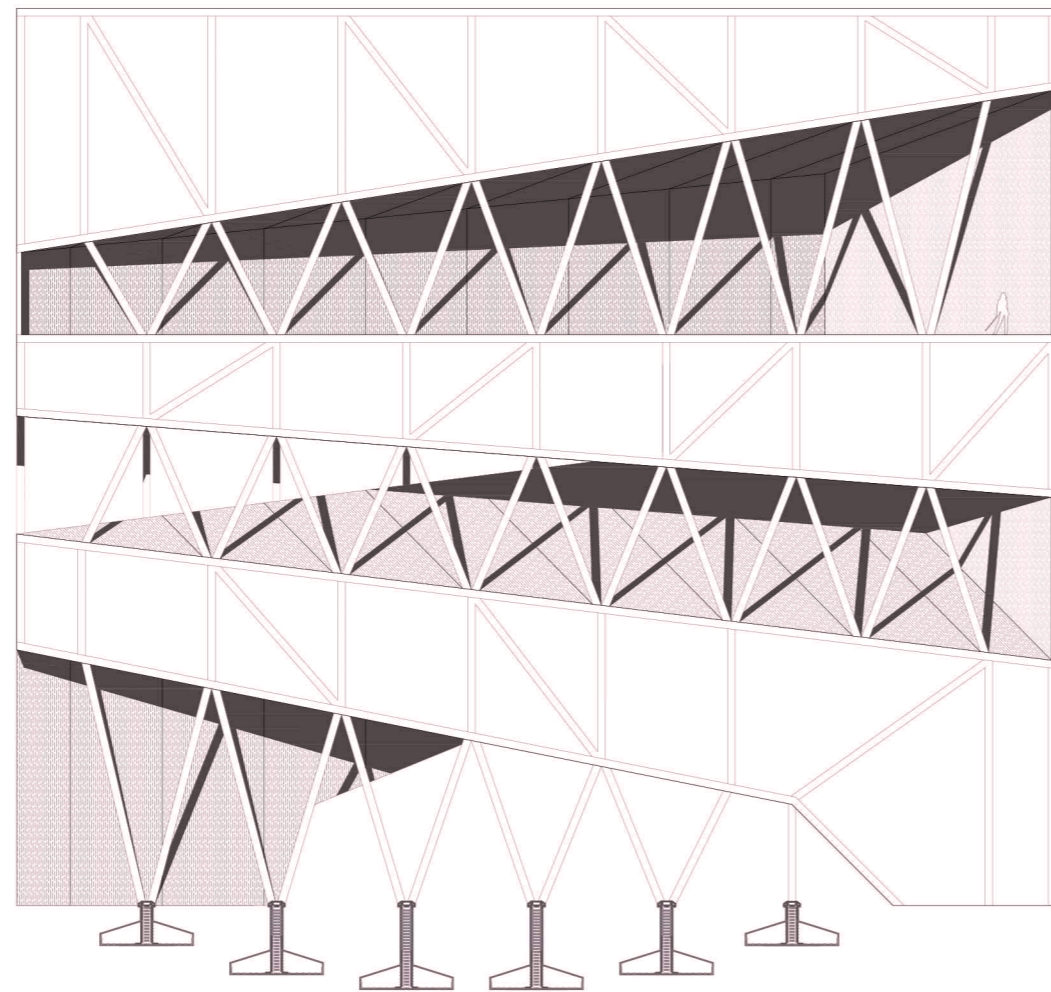
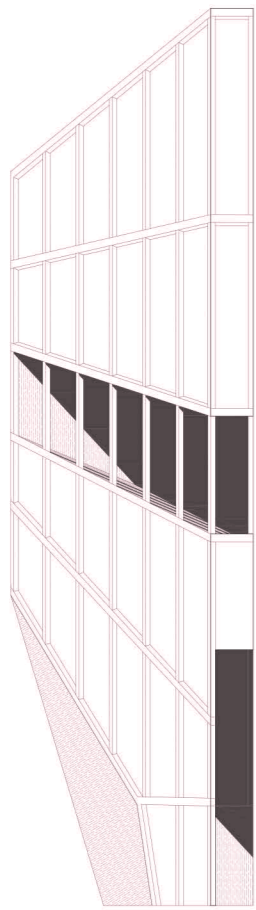
RED DE ASPERSORES



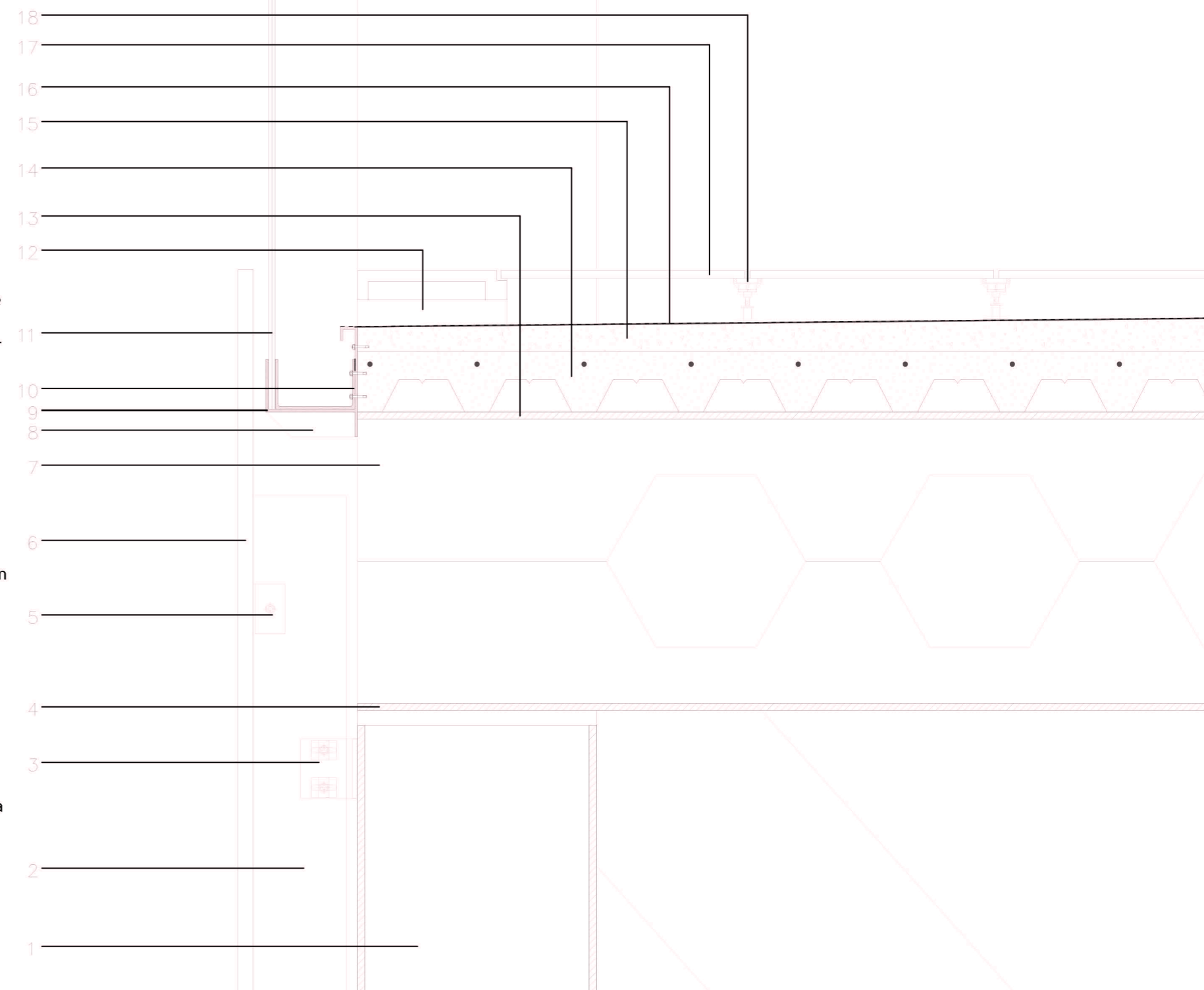


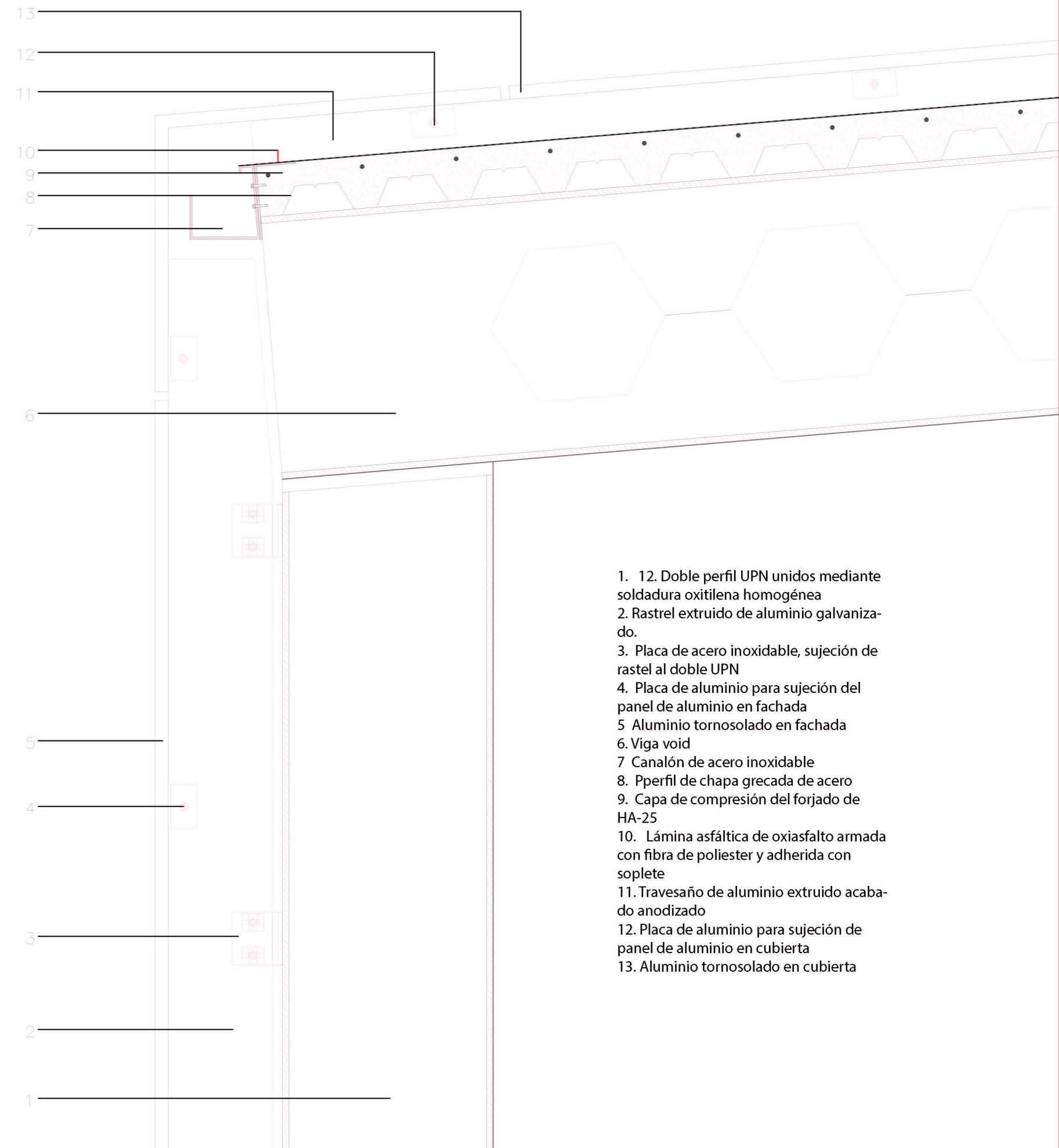
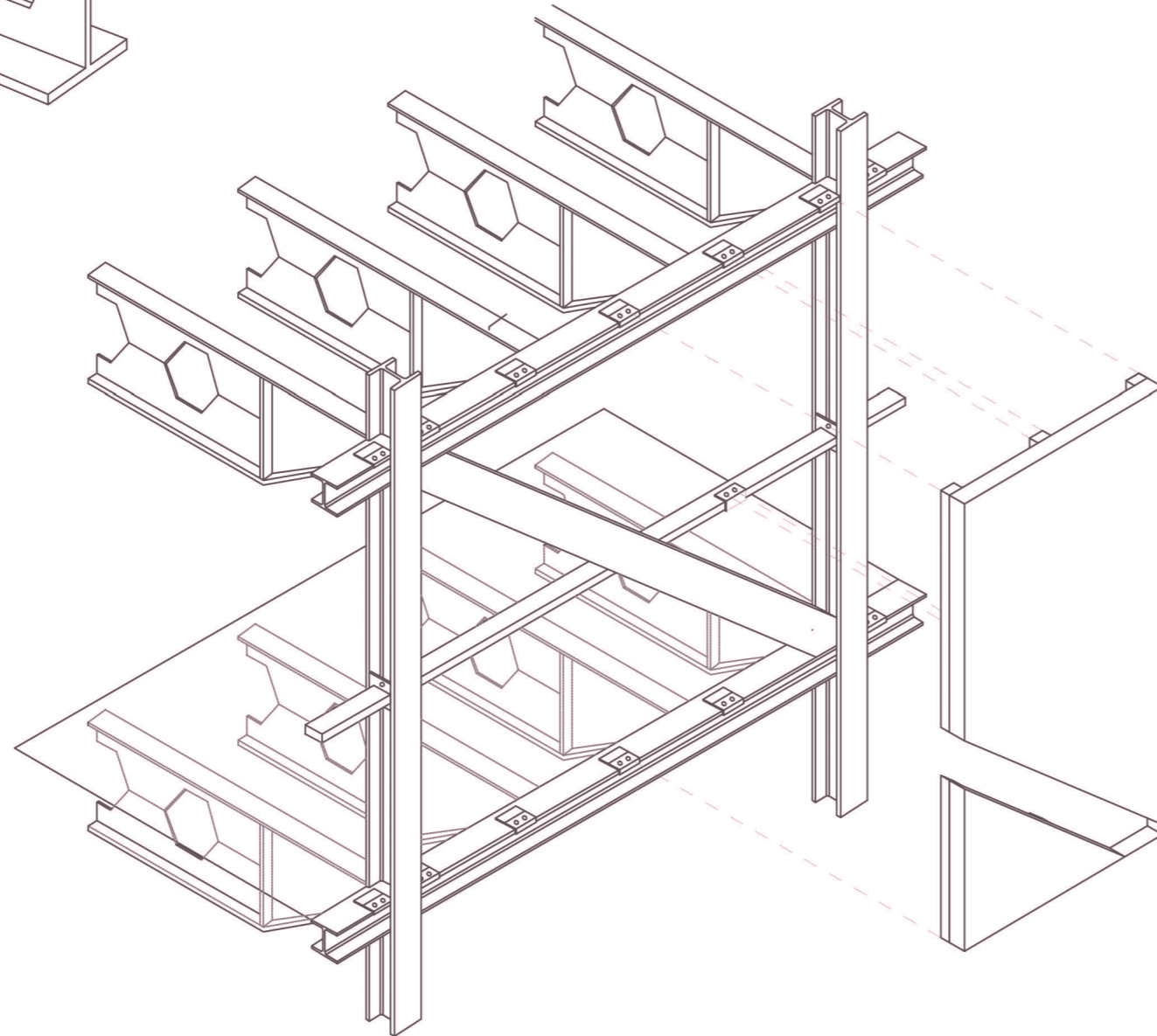
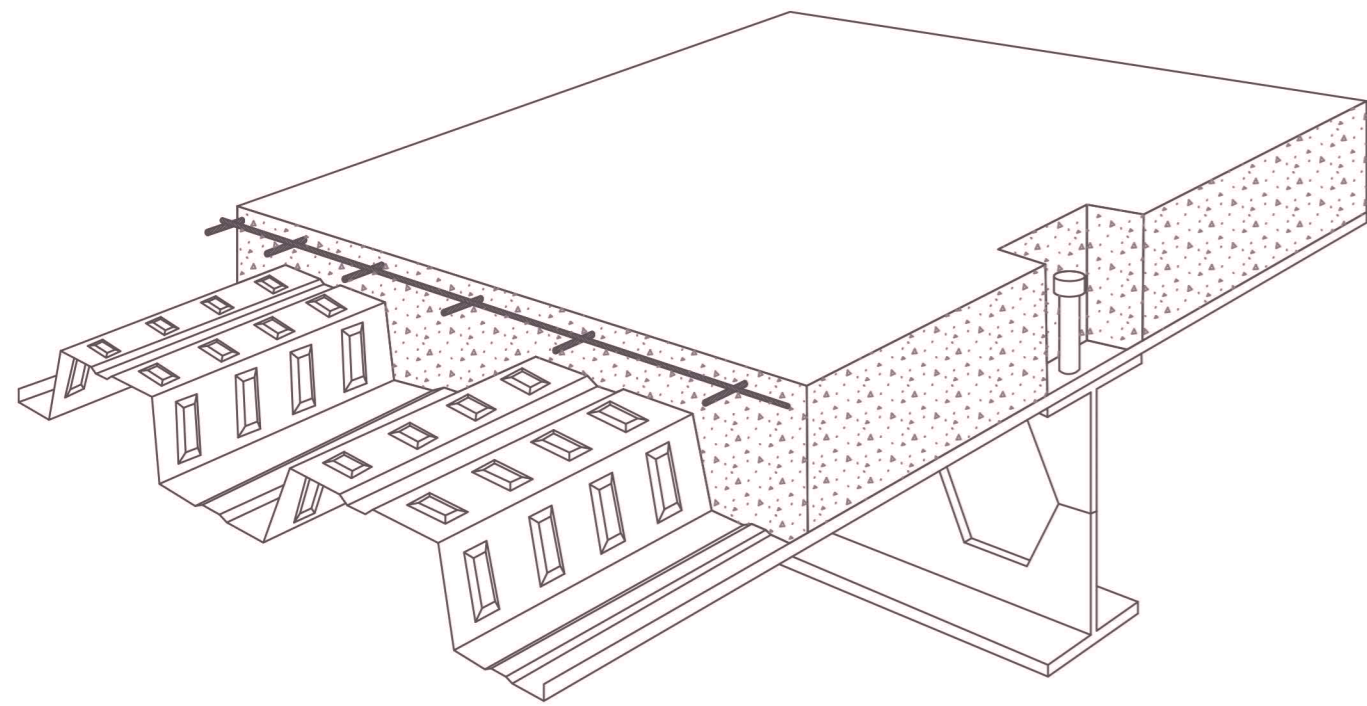
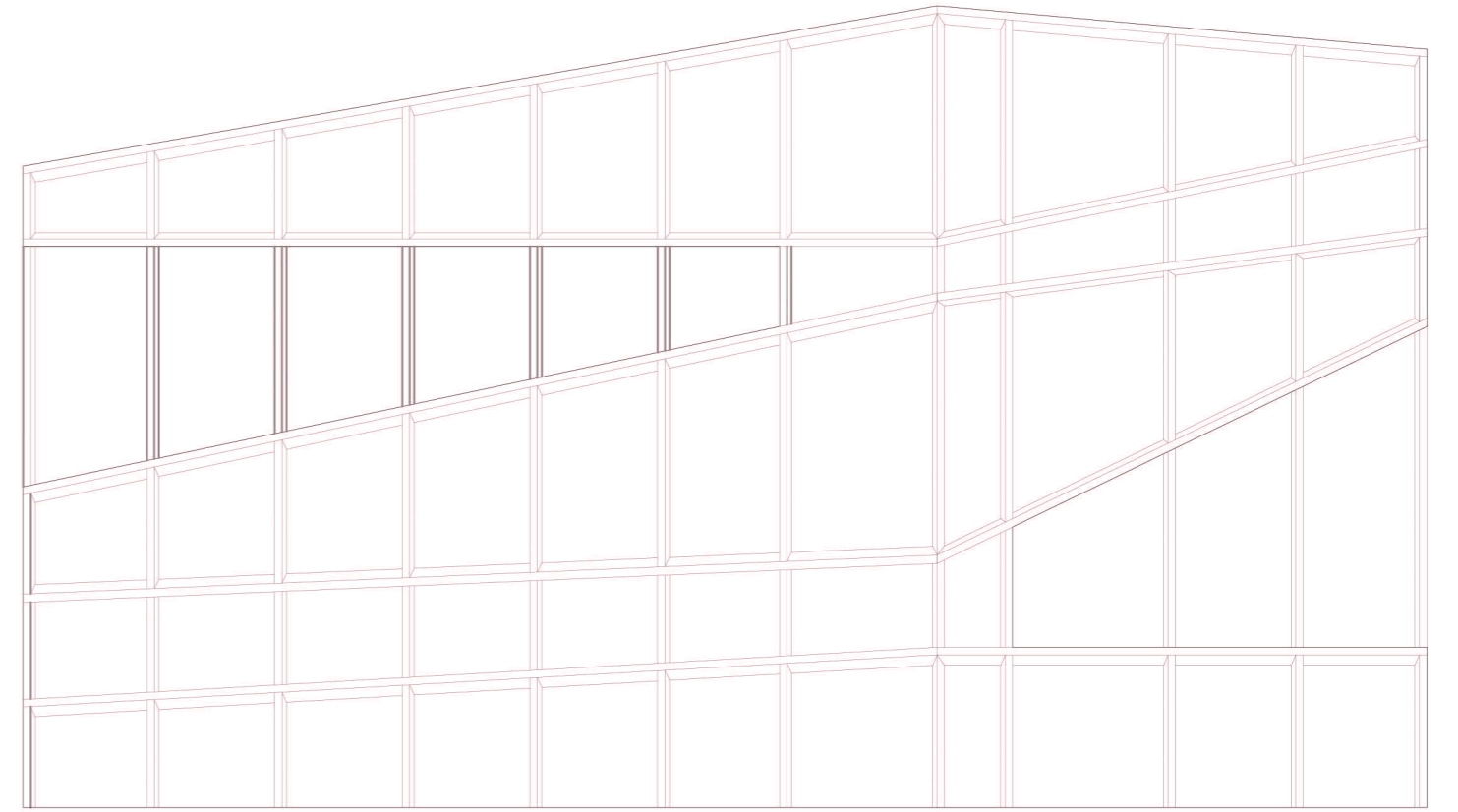
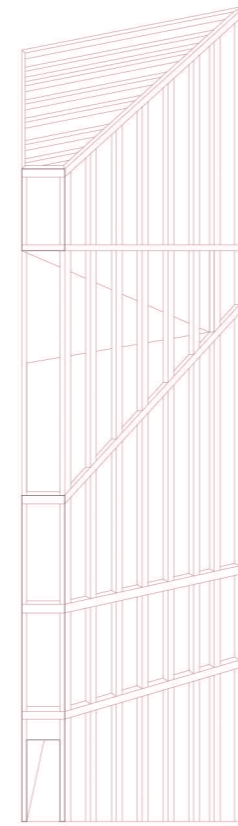
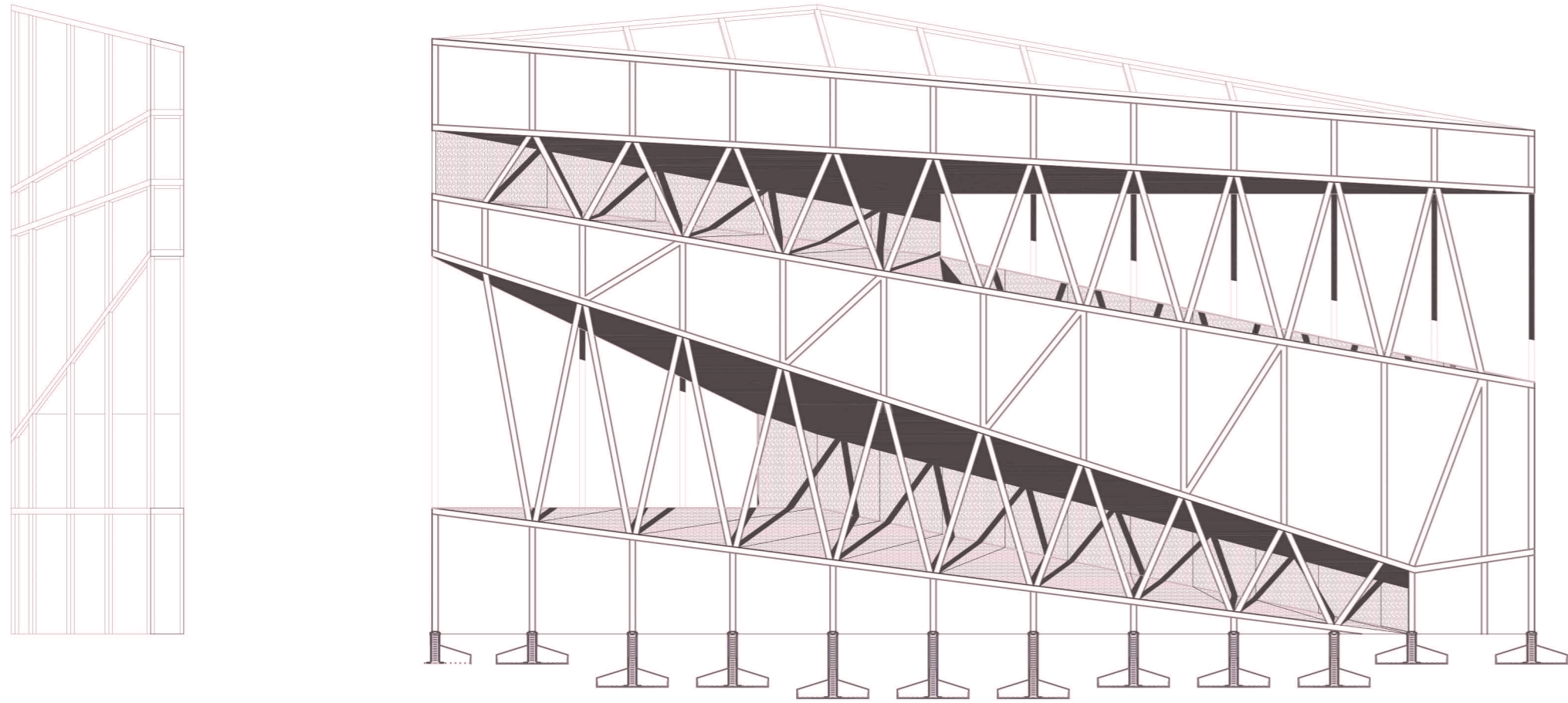


1. Zapata de HA-30
2. Hormigón de limpieza
3. Junta de dilatación de polietileno expandido
4. Encachado
5. Presolera de hormigón en masa
6. Lámina asfáltica de oxiasfalto armada con fibra de poliéster y adherida con soplete
7. Solera de HA de retracción moderada
8. Aislamiento térmico en panel rígido de poliestireno extruido 4 cm
9. Mortero de cemento
10. Pavimento interior autonivelable sika-floor color gris
11. Placa de anclaje de acero S275
12. Doble perfil UPN unidos mediante soldadura oxi-tilena homogénea
13. Rastrel extruido de aluminio galvanizado.
14. Placa de aluminio para sujeción de panel
15. Aluminio tornasolado

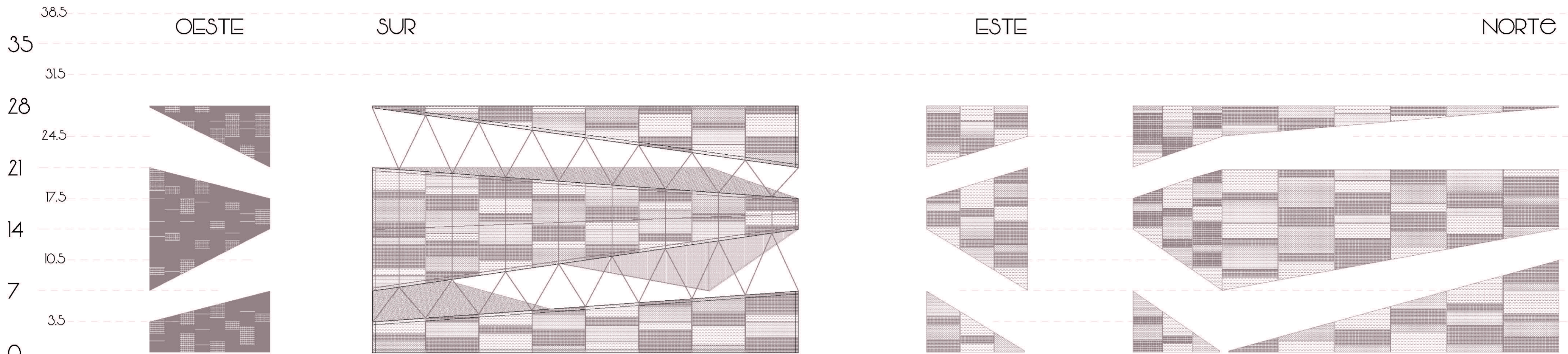


1. 12. Doble perfil UPN unidos mediante soldadura oxielena homogénea
2. Rastrel extruido de aluminio galvanizado.
3. Placa de acero inoxidable, sujeción de rastrel al doble UPN
4. Placa de transición de acero S 275
5. Placa de aluminio para sujeción del panel de aluminio
6. Aluminio tornosolado
7. Viga void
8. Perfiles metálicos para refuerzos del canalón dispuestos cada 1,50 m
9. Perfil de acero inoxidable para sujeción del vidrio
10. Canalón de acero inoxidable
11. Vidrio laminado stadip con acristalamiento 10+10 mm
12. Albardilla aligerada y perforada para remate en cubierta
13. perfil de chapa grecada de acero
14. Capa de compresión del forjado de HA-25
15. Formación de pendiente de HM-25
16. Lámina asfáltica de oxiasfalto armada con fibra de poliéster y adherida con soplete
17. Paviemento de paneles de GRC
18. Soporte regulable roscado (plot) fabricado en polipropileno separados cada 50 cm.





1. 12. Doble perfil UPN unidos mediante soldadura oxiitilena homogénea
2. Rastrel extruido de aluminio galvanizado.
3. Placa de acero inoxidable, sujeción de rastrel al doble UPN
4. Placa de aluminio para sujeción del panel de aluminio en fachada
5. Aluminio tornosolado en fachada
6. Viga void
7. Canalón de acero inoxidable
8. Pperfil de chapa grecada de acero
9. Capa de compresión del forjado de HA-25
10. Lámina asfáltica de oxiasfalto armada con fibra de poliester y adherida con soplete
11. Travesaño de aluminio extruido acabado anodizado
12. Placa de aluminio para sujeción de panel de aluminio en cubierta
13. Aluminio tornosolado en cubierta



IP, ESFUERZOS DE DIMENSIONAMIENTO: CORTANTE TOTAL (K/N/M)

	P1+P2	P3	P4	P5	P6	P7	P8	P9	P10	P11	P12	P13	P14	P15	P17	P18	P19	P20	P21	P22	P23	P24	P25	P26	P27	P28	P29	P30	P31	P32	P33	P34	P35	P36	P37	P38	P39	P40	P41	P42	P43	P44	P45	P46		
4 °P	2xUPN 80(□)	2xUPN 80(□)	2xUPN 80(□)	2xUPN 80(□)	2xUPN 80(□)	2xUPN 80(□)	2xUPN 80(□)	2xUPN 80(□)	2xUPN 80(□)	2xUPN 80(□)	2xUPN 80(□)	2xUPN 80(□)	2xUPN 80(□)	2xUPN 80(□)	2xUPN 80(□)	2xUPN 80(□)	2xUPN 80(□)	2xUPN 80(□)	2xUPN 80(□)	2xUPN 80(□)	2xUPN 80(□)	2xUPN 80(□)	2xUPN 80(□)	2xUPN 80(□)	2xUPN 80(□)	2xUPN 80(□)	2xUPN 80(□)	2xUPN 80(□)	2xUPN 80(□)	2xUPN 80(□)	2xUPN 80(□)	2xUPN 80(□)	2xUPN 80(□)	2xUPN 80(□)	2xUPN 80(□)	2xUPN 80(□)	2xUPN 80(□)	2xUPN 80(□)	2xUPN 80(□)	2xUPN 80(□)	2xUPN 80(□)	2xUPN 80(□)	2xUPN 80(□)	2xUPN 80(□)		
	2xUPN 320(□)	2xUPN 300(□)																			2xUPN 300(□)																									
3 °P	2xUPN 320(□)	2xUPN 300(□)		2xUPN 280(□)	2xUPN 280(□)	2xUPN 280(□)	2xUPN 240(□)	2xUPN 240(□)	2xUPN 220(□)	2xUPN 220(□)	2xUPN 200(□)	2xUPN 200(□)	2xUPN 200(□)	2xUPN 200(□)	2xUPN 180(□)			2xUPN 160(□)	2xUPN 160(□)	2xUPN 140(□)	2xUPN 140(□)	2xUPN 120(□)	2xUPN 140(□)			2xUPN 280(□)	2xUPN 280(□)	2xUPN 240(□)	2xUPN 220(□)	2xUPN 200(□)	2xUPN 180(□)	2xUPN 160(□)		2xUPN 180(□)	2xUPN 180(□)	2xUPN 200(□)	2xUPN 200(□)	2xUPN 200(□)	2xUPN 200(□)	2xUPN 200(□)	2xUPN 200(□)	2xUPN 200(□)	2xUPN 200(□)	2xUPN 200(□)	2xUPN 200(□)	
			2xUPN 280(□)	2xUPN 280(□)	2xUPN 280(□)	2xUPN 240(□)	2xUPN 240(□)	2xUPN 220(□)	2xUPN 220(□)	2xUPN 200(□)	2xUPN 200(□)	2xUPN 200(□)	2xUPN 200(□)	2xUPN 180(□)						2xUPN 140(□)			2xUPN 300(□)							2xUPN 180(□)	2xUPN 160(□)	2xUPN 160(□)														
	2xUPN 320(□)	2xUPN 300(□)																																												
2 °P		2xUPN 80(□)	2xUPN 80(□)	2xUPN 100(□)	2xUPN 100(□)	2xUPN 120(□)	2xUPN 140(□)	2xUPN 160(□)	2xUPN 160(□)	2xUPN 180(□)	2xUPN 200(□)	2xUPN 200(□)	2xUPN 220(□)		2xUPN 220(□)	2xUPN 220(□)	2xUPN 220(□)	2xUPN 220(□)	2xUPN 200(□)	2xUPN 200(□)	2xUPN 180(□)	2xUPN 180(□)							2xUPN 200(□)	2xUPN 220(□)	2xUPN 220(□)	2xUPN 240(□)	2xUPN 240(□)	2xUPN 240(□)	2xUPN 220(□)	2xUPN 220(□)		2xUPN 200(□)	2xUPN 180(□)	2xUPN 180(□)	2xUPN 180(□)					
												2xUPN 220(□)	2xUPN 220(□)	2xUPN 220(□)	2xUPN 220(□)	2xUPN 220(□)	2xUPN 220(□)	2xUPN 200(□)	2xUPN 200(□)	2xUPN 180(□)	2xUPN 180(□)		2xUPN 80(□)	2xUPN 80(□)	2xUPN 100(□)	2xUPN 120(□)	2xUPN 160(□)	2xUPN 180(□)		2xUPN 200(□)	2xUPN 220(□)	2xUPN 220(□)	2xUPN 240(□)	2xUPN 240(□)	2xUPN 240(□)	2xUPN 220(□)	2xUPN 220(□)									
1 °P		2xUPN 120(□)	2xUPN 140(□)	2xUPN 160(□)	2xUPN 160(□)	2xUPN 180(□)	2xUPN 180(□)	2xUPN 200(□)	2xUPN 200(□)	2xUPN 200(□)	2xUPN 220(□)	2xUPN 220(□)	2xUPN 220(□)	2xUPN 220(□)	2xUPN 220(□)	2xUPN 200(□)	2xUPN 200(□)	2xUPN 180(□)												2xUPN 200(□)	2xUPN 220(□)	2xUPN 220(□)	2xUPN 240(□)	2xUPN 240(□)	2xUPN 240(□)	2xUPN 220(□)	2xUPN 220(□)		2xUPN 200(□)	2xUPN 180(□)	2xUPN 180(□)	2xUPN 180(□)				
Cimentación	2xUPN 80(□)	2xUPN 80(□)	2xUPN 100(□)	2xUPN 120(□)	2xUPN 120(□)	2xUPN 140(□)	2xUPN 140(□)	2xUPN 160(□)	2xUPN 160(□)	2xUPN 160(□)	2xUPN 180(□)	2xUPN 180(□)	2xUPN 180(□)	2xUPN 180(□)	2xUPN 160(□)	2xUPN 140(□)	2xUPN 140(□)	2xUPN 120(□)	2xUPN 80(□)		2xUPN 80(□)	2xUPN 80(□)	2xUPN 100(□)	2xUPN 140(□)	2xUPN 160(□)	2xUPN 160(□)	2xUPN 200(□)	2xUPN 200(□)	2xUPN 220(□)	2xUPN 240(□)		2xUPN 360(□)	2xUPN 360(□)	2xUPN 380(□)	2xUPN 380(□)	2xUPN 380(□)	2xUPN 380(□)	2xUPN 380(□)	2xUPN 380(□)	2xUPN 380(□)	2xUPN 380(□)	2xUPN 380(□)	2xUPN 380(□)			

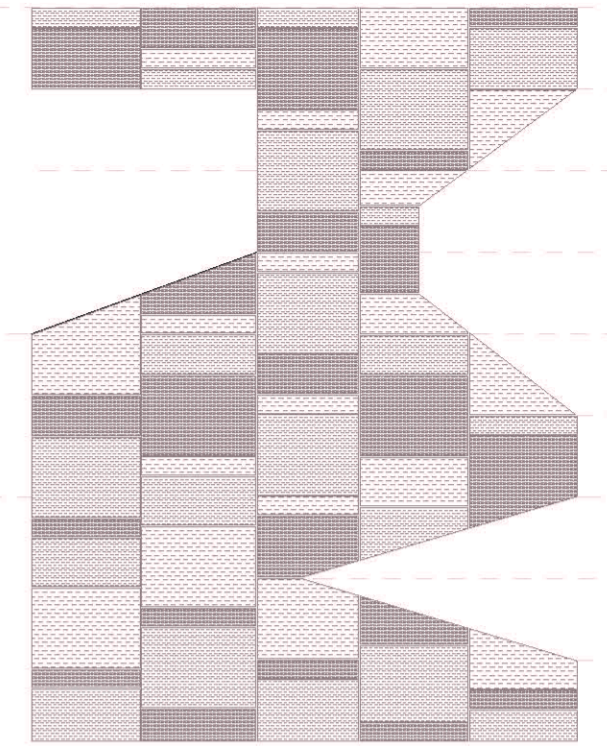
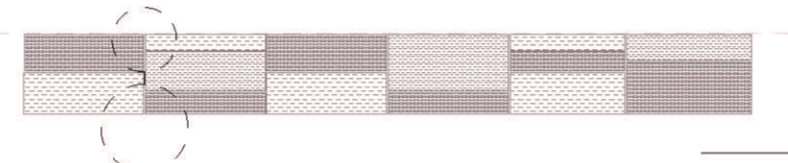
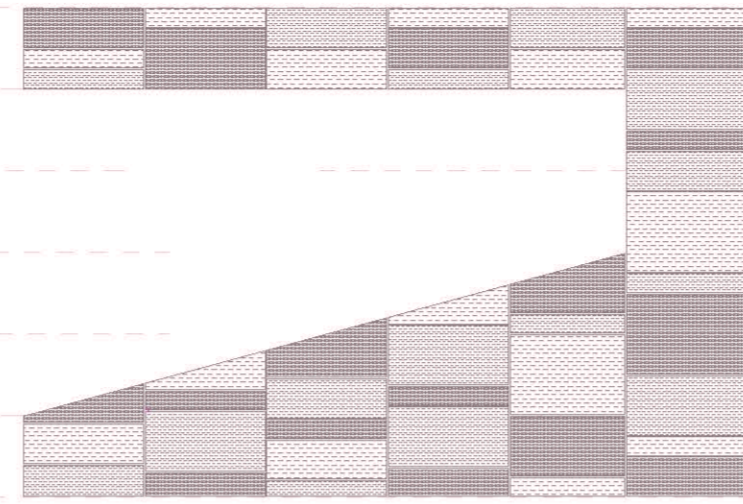
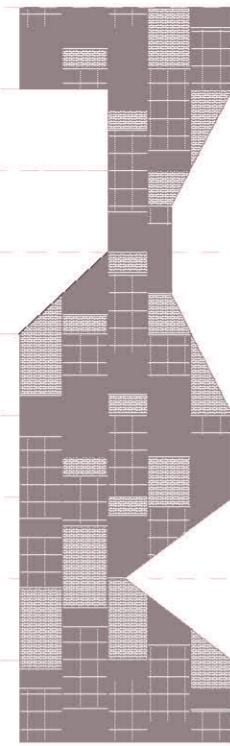
B'

OESTE

SUR

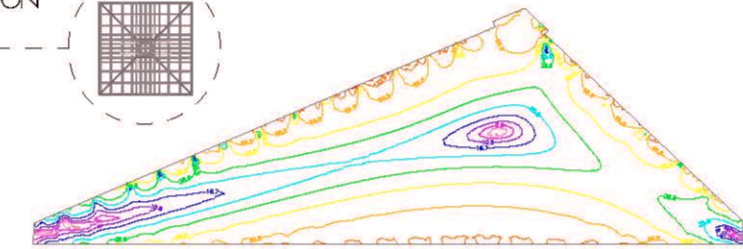
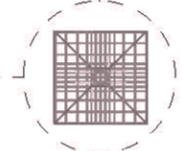
ESTE

NORTE

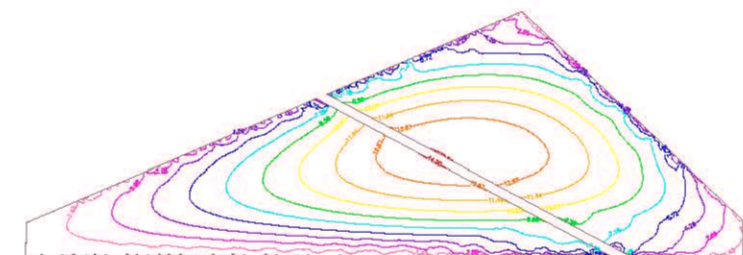


B'

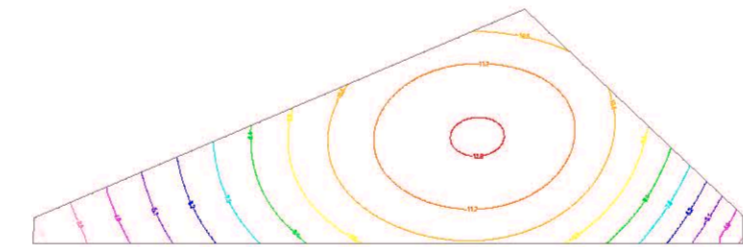
DETALLES DE ORIENTACION



1P, ESFUERZOS DE DIMENSIONAMIENTO: CORTANTE TOTAL (kN/m)

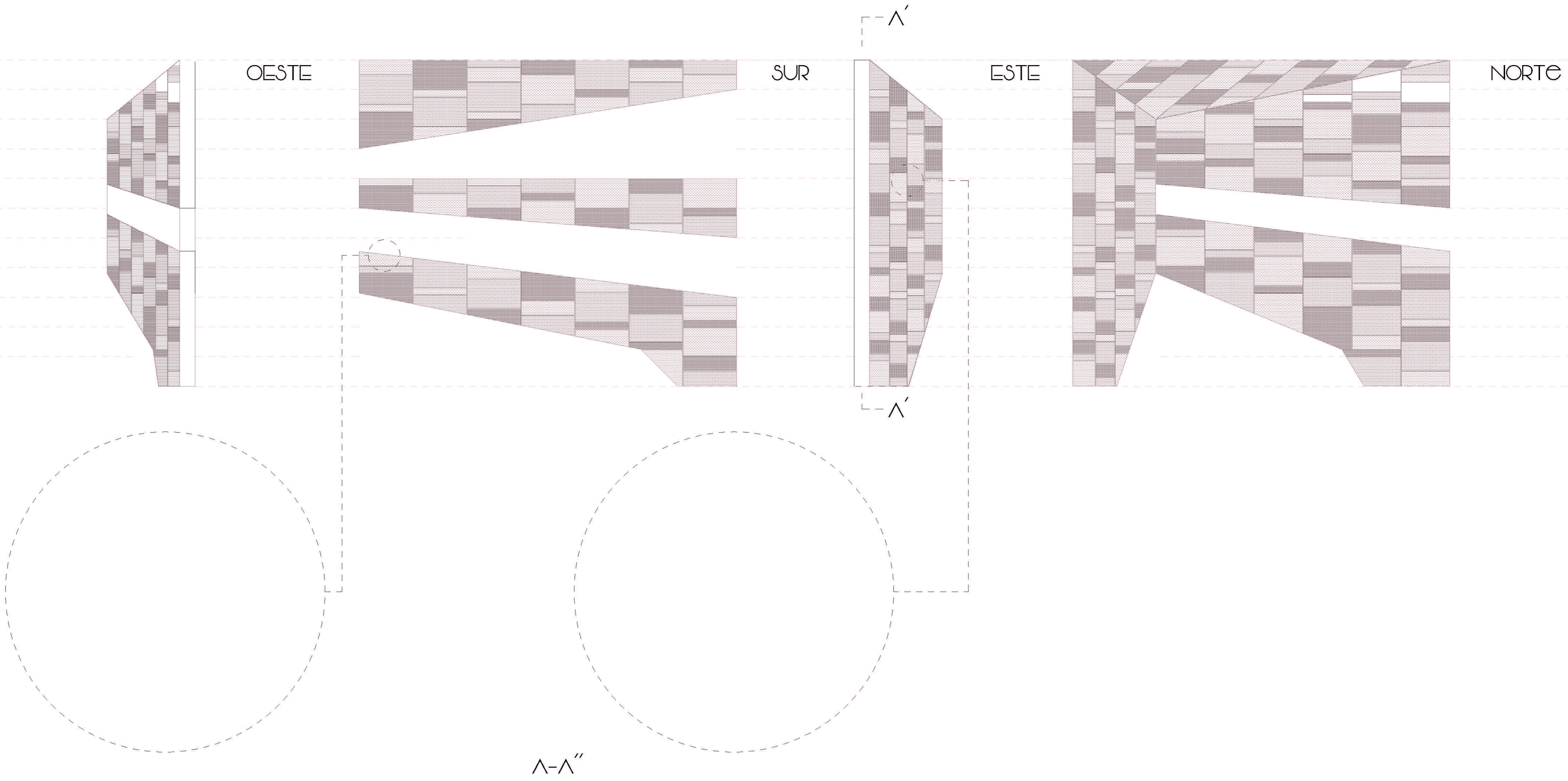


3P, QUANTÍAS: INFERIOR, DIRECCIÓN Y (cm2/m)



CUBIERTA, DESPLAZAMIENTO Z (mm), CARGA PERMANENTE

B-B''



OESTE

SUR

ESTE

NORTE

