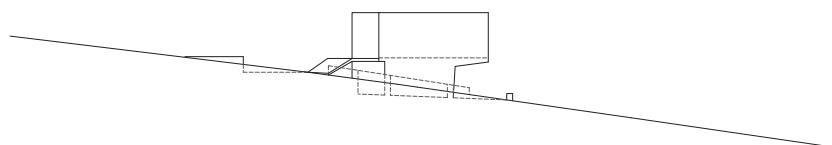


Ravelo Medical Clinic

This small medical clinic is located in a rural environment, that occupies a prominent outstanding hillside position. It has been designed on two levels, both with street-level pedestrian access: the main floor houses the medical surgeries and administrative areas, while the lower floor offers multipurpose spaces for community activities.

The medical surgeries are south-facing. The intermediate space between the windows and the exterior folding shutters regulates the entry of sunlight while at the same time offering optimal lighting conditions for the workspaces: natural light is filtered and reflected on coloured surfaces, so as to create a comfortable, warm atmosphere.

To the north, the concrete frame embraces the distant countryside, incorporating it into the everyday life of the clinic through the panoramic window, converting the waiting area into a room with panoramic views, a therapeutic space, directly connected with the landscape.



0 1 5 10m

Street View



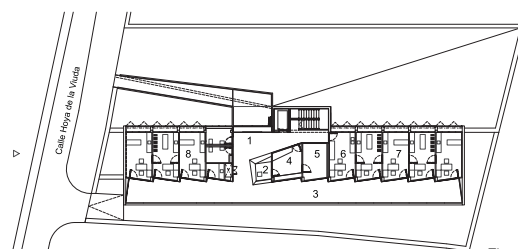
Ravelo Medical Clinic

Location	Calle Hoya de la Viuda s/n, Ravelo, El Sauzal, Tenerife, Spain
Client	Gobierno de Canarias: Consejería de Sanidad y Consumo
Consultants	GPI Ingenieros
Contract	Isgarpa
Floor Area	706 m ²
Awards:	Design & Health International Academy Awards (2009): Special Award, World Architecture Festival WAF (2008): Shortlisted, Bienal Miami+Beach (2007): Bronze Medal

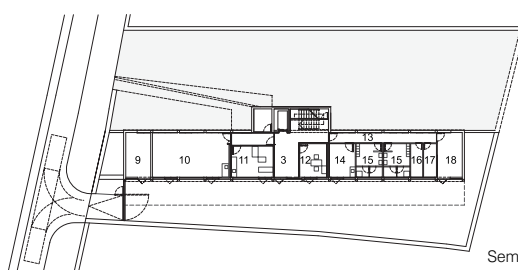


- 1 Hall
- 2 Reception
- 3 Waiting Area
- 4 Office
- 5 Archive
- 6 Analysis
- 7 Surgery
- 8 Pediatric Surgery
- 9 Installations
- 10 Multipurpose Room |
Childbirth Preparation
- 11 Matron
- 12 Social Assistance
- 13 Staff Area
- 14 Staff Room
- 15 Changing Rooms
- 16 Cleaning
- 17 Waste
- 18 Storage

0 1 5 10m



First Floor -
Main Access



Semibase

