

Santa Lucía Security Centre

The building is located in a residential neighbourhood characterised by marginal building practices and exponential growth that was not subject to any form of urban planning, singularly lacking in facilities and public spaces.

In this context, the building is integrated into its surroundings through a continuation of the pattern of the surrounding blocks. Its continuous skin traces the limits of the plot on the second floor, while opening up on the ground floor, offering a space of urban encounter.

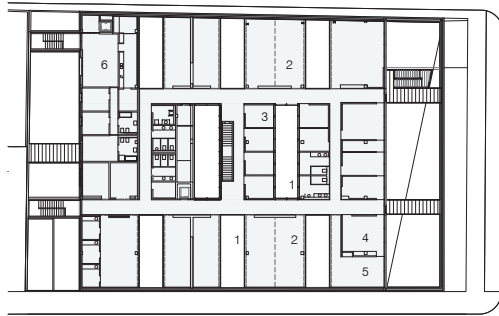
A suspended volume which is completely closed off from the outside defines the institutional scale of the building, while a system of interior patios, interconnected by means of a central circulation ring, organizes the interior and establishes the routes in a sequence of alternating light and shade.



Situation

Santa Lucía Security Centre

○



Location C/Escorial esquina Dr. Negrín s/n, Vecindario, Santa Lucía de Tirajana, Gran Canaria, Spain
 Client Ministerio del Interior: Dirección de Infraestructuras y Material de Seguridad
 Consultants Gpi Ingenieros
 Contract Seis / Dragados S.A.
 Floor Area 4.325 m²
 Awards WAF World Architecture Festival (2012): Shortlisted

1 Patrios
 2 Special Units
 3 Private Offices
 4 Police Chief
 5 Assembly
 6 Police Chief's Residence

Second Floor

