

**Biological information and comments on *Halophila decipiens* meadows of the Canary Islands (Hydrocharitaceae, Magnoliophyta)**

M<sup>a</sup> CANDELARIA GIL-RODRÍGUEZ<sup>1</sup>, MARCELINO DEL ARCO<sup>1</sup>, WOLFREDO WILDPRET DE LA TORRE<sup>1</sup>  
CARLOS L. HERNÁNDEZ-GONZÁLEZ<sup>1</sup> Y RICARDO J. HAROUN<sup>2</sup>

<sup>1</sup> *Departamento de Biología Vegetal, Área de Botánica.  
Facultad de Farmacia. Univ. de La Laguna.*

38071 La Laguna, Tenerife. Islas Canarias, España. [mcgil@ull.es](mailto:mcgil@ull.es)

<sup>2</sup> *Departamento de Biología. Facultad de Ciencias del Mar.  
Univ. de Las Palmas de Gran Canaria.*

35017 Las Palmas, Gran Canaria, España.

M<sup>a</sup> CANDELARIA GIL-RODRÍGUEZ, MARCELINO DEL ARCO, WOLFREDO WILDPRET DE LA TORRE<sup>1</sup>, CARLOS L. HERNÁNDEZ-GONZÁLEZ y RICARDO J. HAROUN (2007). Comentarios e información biológica sobre las praderas de *Halophila decipiens* amenazadas en las islas Canarias (Hydrocharitaceae, Magnoliophyta). *VIERAEA* 35: 77-85.

RESUMEN: *Halophila* Thouars es un género pantropical de plantas de pequeño porte que forman poblaciones en el sublitoral. *H. decipiens* Ostenfeld forma praderas que se localizan entre los 15-40 m en las costas canarias, y que constituyen la asociación *Halophiletum decipientis* Wildpret & M.C. Gil. *H. decipiens* es una especie protegida y ha sido considerada como planta de "interés especial" en el catálogo de las especies en peligro de plantas Canarias (BOC 2001 / 097). De similar forma *Halophiletum decipientis* ha sido considerado por la Comisión de las Comunidades Europeas, DG Environment, 1999, "Habitat del Interés Comunitario" (nº 111022). Comparte hábitat con *Cymodocea nodosa* (Ucria) Ascherson, también bajo protección, como "planta sensible a la destrucción de su hábitat", BOC 2001 / 097, y *Cymodoceum nodosae* es considerado hábitat "de interés Comunitario" (nº 111021). En el presente trabajo se pone en evidencia la evolución y la posible amenaza del hábitat *Halophiletum decipientis* por la intromisión de *Caulerpa racemosa* var. *cylindracea* (Sonder) Verlaque, Huisman et Boudouresque, una clorofita invasora de origen australiano.

Palabras claves: Especies protegidas; especies invasoras; conservación; *Halophila decipiens*; *Caulerpa racemosa* var. *cylindracea*.

**ABSTRACT:** *Halophila* Thouars is a pantropical genus of small size seagrasses. *Halophila decipiens* Ostenfeld forms deep-water seagrass beds extending from 15–40 m in the Canary coasts which constitute the association *Halophiletum decipientis* Wildpret & M.C. Gil. *H. decipiens* is a protected species that was considered as a plant of “special interest” by the Canary Islands Endangered Species Catalogue, BOC 2001/ 097, and *Halophiletum decipientis* was considered by the European Commission, DG Environment, 1999, “Habitat of Community Interest” (No 111022). It shares habitat with *Cymodocea nodosa* (Ucria) Ascherson, also considered under protection, as “sensitive to habitat disturbance”, BOC 2001 / 097, and the community *Cymodocetum nodosae* is also “Habitat of Communitarian interest” (No 111021). In this paper the evolution of *Halophiletum decipientis* in recent years is shown, and the possible threat of the habitat because of the intromission *Caulerpa racemosa* var. *cylindracea* (Sonder) Verlaque, Huisman et Boudouresque, an invasive Australian chlorophyte, is considered. **Keywords:** Endangered species; invasive species; conservation; *Halophila decipiens*; *Caulerpa racemosa* var. *cylindracea*.

## INTRODUCTION

Seagrass meadows are characteristically found growing on unconsolidated substrata of marine environments in tropical and temperate regions. These flowering plant communities are considered among the most productive in the biosphere (McRoy & Mc Millan, 1977; Young, 1978; Bell & Westoby, 1989; Larkum *et al.*, 1989; Duarte & Chiscano, 1999; Hemminga & Duarte, 2000; Pavon-Salas *et al.*, 2000). Besides, their meadows serve as nursery and breeding grounds for diverse marine organisms (Young, 1978; Bell *et al.*, 1989).

Three marine phanerogams, *Cymodocea nodosa* (Ucria) Ascherson, *Zostera noltii* Hornemann and *Halophila decipiens* Ostenfeld are reported mainly from leeward subtidal sites of the Canary Archipelago (Haroun *et al.*, 2002, 2003). One of them, *H. decipiens*, was designated among the spermatophytes of “special interest” in the Canary Islands Endangered Species Catalogue, BOC 2001 / 097, Decret 151/2001. Furthermore, the community of *H. decipiens* (*Halophiletum decipientis*) is included as “Habitat of Community Interest” (No. 11102) (European Commission, DG Environment, 1999).

*H. decipiens*, with type locality at Gulf of Thailand off Koh Kahdat (Womersley, 1984; Guiry & Nic Dhonncha 2004), is the second most abundant vascular marine species in the Canary Archipelago, after *Cymodocea nodosa* (Pavón-Salas *et al.*, 2000). It has a pantropical distribution ([www.algaebase.com](http://www.algaebase.com)): Australasia (Womersley, 1984; Huisman, 2000); Pacific Ocean (Payri *et al.*, 2000); Brazil (Oliveira *et al.*, 1983); Caribbean Sea (Littler & Litter, 2000); N Atlantic Ocean, including Canary Islands (Haroun *et al.*, 2002, 2003).

The first report of *H. decipiens* from the Central-East Atlantic Ocean was done by Gil-Rodríguez & Cruz (1982) and Gil-Rodríguez *et al.*, (1982) from collections in few localities along the southeastern coast of Tenerife, and since then several new localities have been added. Later it was recorded for La Palma, in the harbour of Santa Cruz de La Palma between 6–9 m depth (Hernández-González & Gil-Rodríguez, 1993), and also in Gran Cana-

ria, in one locality of the SW coast (Puerto Rico, 19 m depth) (Betancort *et al.*, 1995; Pavón-Salas *et al.*, 2000). Moreira *et al.* (2004) found it growing locally from 20 to 40 m depth in two localities of the SE of Tenerife.

Recent surveys along the Canary coasts have resulted in a much extended knowledge of this interesting species. This study provides some ecological and chorological knowledge of *H. decipiens* meadows in the Canary Islands regarding to environmental status and habitat threatens.

## MATERIAL AND METHODS

**Study area:** The Canary Archipelago is located in the Central East Atlantic Ocean, near to the Northwestern African Coast; the minimum distance with the continent is about 110 km. This volcanic archipelago is composed of seven main islands and several islets. Except in the case of Lanzarote and Fuerteventura, which share the same subtidal shelf, the sea-bottom may reach more than 2000 m depth among the islands. The older islands have wide insular shelves mainly located at the Southern and Southwestern coasts. Extensive sandy bottoms, suitable for seagrass meadows development, may appear in such areas.

**Methods:** Several transects were sampled between 20–30 m depth along the coast of Tenerife and Gran Canaria islands to characterize the community structure. The sampling was performed using 20 x 20 cm quadrats divided into subquadrats of 10 x 10 cm side (Fig. 1a, b). Phytosociological relevés chosen randomly were compiled following the protocol of the Zürich-Montpellier School (Braun Blanquet, 1979) (Table 1). Numbers in that table refers to the abundance/dominance index. The phytosociological nomenclature is according to Rivas-Martínez *et al.* (2001) for high level syntaxa. The association name and description is according to Rivas-Martínez *et al.* (2002).

At the same time, the frequency, abundance and density of *Halophila* plants in the sampled area was determined, in Tenerife Island (Table 2) following the quadrat method proposed by Dawes (1986, 1998), with quadrats of 18 x 18 cm divided into subquadrats of 2 x 2 cm (Fig. 1c, d), by using the following equations (Dawes, 1986: 400; 1998: 369):

$$\text{Frequency} = \frac{\text{Number of occupied quadrats / units}}{\text{Total number of quadrats / units}}$$

$$\text{Abundance} = \frac{\text{Total number of individual plants (aerial sprouts)}}{\text{Number of occupied quadrats / units}}$$

$$\text{Density} = \frac{\text{Number of individual species / unit area}}{\text{Total number of unit areas}}$$

Voucher specimens are kept in the TFC Herbarium at University of La Laguna (TFC no 43.298; 43.614–43.623; 43.800). Furthermore, underwater pictures of the community were taken on transects along the southeastern coast of Tenerife.

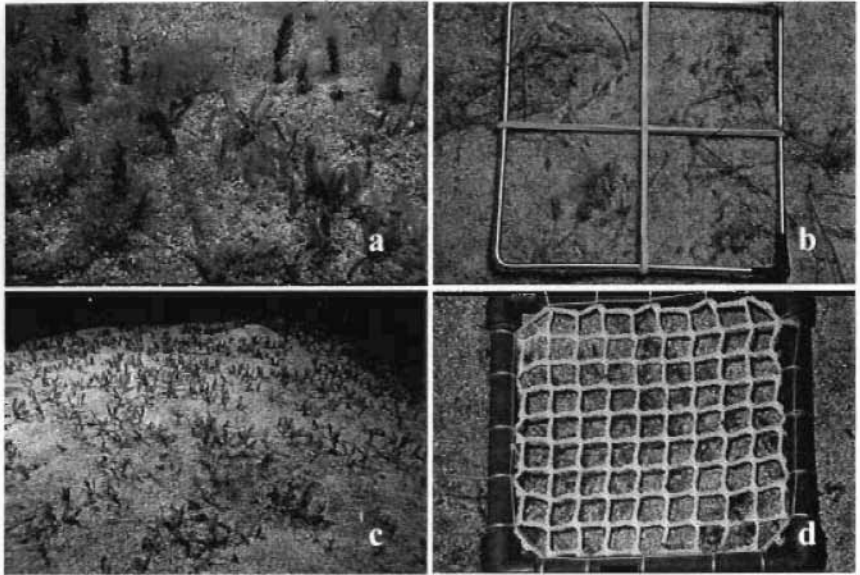


Fig. 1.- 1a: *Halophiletum decipiens*, with *Caulerpa racemosa* var *cylindracea*.- 1b: 20 x 20 cm quadrat and 10 x 10 subquadrats. 1c: *Halophiletum decipiens* general view.- 1d: 18 x 18 cm quadrat and 2 x 2 subquadrats.

## RESULTS

The Canarian specimens of *H. decipiens* fit into the general description of the species, provided among others by den Hartog (1970, 1971) and Gil-Rodríguez & Cruz Simó (1982). *H. decipiens* (Hydrocharitaceae) is a monoecious small plant, with a slender rhizome not exceeding 1 mm in diameter, and internodes 0.5-4.5 cm long. Roots are 2-5 cm long and 0.2-0.5 mm thick. Both, solitary roots and leaves paired, born from sprouts at each node. Leaves elliptic-oblong, with a rounded apex, sometimes cuneate at the base, 5-10 mm in length and not more than 5 mm in width.

The distribution pattern of this species is enlarged to include a new locality in the E coast of Tenerife Island (at 20-25 m depth in Iguete de San Andrés) (Moreira *et al.*, 2004); in the SE coast of Gran Canaria (at 25 m depth in Playa del Cabrón, Arinaga; F. Espino and R. Herrera, *pers. com.*) below *Cymodocea nodosa* meadows and it is now first recorded for Gomera (Punta de la Herradura, at 19 m depth, TFC Phyc 43.800) and La Caleta (El Hierro, recorded by C.L. Hernández-González) where it is present only in small and isolated patches.

In the *Halophiletum decipiens* of San Andrés (E of Tenerife) stand (LIC "sebadales de San Andrés" ES 7020120) has been recently discovered *Avrainvillea canariensis* A. Gepps et E.S. Gepps an endemic chlorophyte species under protection, "sensitive to habitat disturbance" (BOC 2001 / 097).

The expansion of the community has been observed recently in the E and S of Tenerife (Moreira, *com. pers.*) as well as an important change in its composition, which now includes *Caulerpa racemosa* var. *cylindracea* (Sonder) Verlaque, Huisman et Boudouresque an invasive chlorophyta species of Australian origin, recorded as such in the Mediterranean basin from Port Menton, near Italy, to Marseille and now in the Canary Islands (Verlaque *et al.*, 2000, 2003, 2004).

Davis *et al.* (2001) reported a competition for nitrogen between the neotropical seagrass *Thalassia testudinum* Banks ex König, and the rhizophytic green macroalga *Halimeda incrassata* Lamouroux in the Florida Keys. Is a similar process operating between *H. decipiens* and *Caulerpa racemosa* var. *cylindracea* in the Canary waters? Further research is needed.

*Halophiletum decipientis* constitutes along the Canarian coast an oligospecific (sometimes monospecific) meadow community, in deep water, dominated by *H. decipiens*. The macroalgae *Caulerpa racemosa* var. *cylindracea* is frequent in the community, at least in subtidal areas of Tenerife Island. Sometimes *Cymodocea nodosa* as well as *Dictyota dichotoma* (Hudson) J.V. Lamouroux grow in the community (Pavon-Salas *et al.*, 2000). Apart from these plants, only some few epiphytes have been recorded.

Using two different complementary approaches we have tried to evaluate the floristic composition and other quantitative parameters of *Halophiletum decipientis* in Canary Islands. Table 1 shows details of this composition and the phytosociological adscription of the community.

**Table 1.** *Halophiletum decipientis* Wildpret & M.C. Gil 2002, *Syringodio-Thalasion testudinum* Borhidi 1996, *Thalassio-Syringodietalia filiformis* Borhidi, Muñiz & Del Risco in Borhidi 1996, *Halodulo wrightii-Thalassietea testudinum* Den Hartog ex Rivas-Martínez, Fernández-González & Loidi 1999.

Plot nº	1	2	3	4	5	6	7	8	9	10	11	12
Depth (m)	22	25	23	22	21	20	22	30	26.5	25.5	25	19
Area (cm <sup>2</sup> )	400	400	400	400	400	400	400	400	400	400	400	400
Cover (%)	60	25	15	15	45	20	40	15	15	15	60	20
Number of taxa	5	4	4	4	2	1	1	1	1	1	1	1
<b>Character taxa:</b>												
<i>Halophila decipiens</i> Ostenfeld	3	1	1	1	3	2	3	1	1	1	4	2
<b>Companion taxa:</b>												
<i>Caulerpa racemosa</i> var. <i>cylindracea</i> (Sonder) Verlaque, Huisman et Boudouresque	+	2	+		1						+	
<i>Cymodocea nodosa</i> (Ucria) Ascherson				+							1	+
<i>Dictyota dichotoma</i> (Hudson) Lamouroux	2											
<b>Epiphytes</b>												
<i>Ulothrix flacca</i> (Dillwyn) Thuret in Le Jolis	+	+	+	+								
<i>Cyanophycota</i>	+	+	+	+								

**Localities – Tenerife:** 1.- Cueva de los Camarones; 2, 5, 9 and 10.- El Palm-Mar; 3 and 7.- La Arenita; 4 and 6.- Punta del Bocinegro; 8.- Cueva de La Rasca.

**Localities – Gran Canaria:** 11.- Playa El Cabrón; 12.- Puerto Rico.

**Note:** Epiphytes are indicated through presence / absence index.

The structure of the meadows is in evenly distributed homogeneous patches. The vertical distribution pattern of this species is between 6 and 40 m depth, 15-25 m depth being the most common. *H. decipiens* has been found growing on sandy and muddy bottoms.

Table 2, based in Tenerife populations, showing frequency, abundance and density data, refers to the dominant role played by *H. decipiens* in the community. It is still early to relate density of *H. decipiens* and presence of *Caulerpa racemosa* var. *cylindracea*, and monitoring tasks are required in the Canary Archipelago in the future.

**Table 2.** *Halophiletum decipiens* Wildpret & M.C. Gil 2002.

Plot n°	1	2	3	4	5	6	7	8	9	10
Depth (m)	22	25	23	22	21	20	22	30	26.5	25.5
Area (cm <sup>2</sup> )	324	324	324	324	324	324	324	324	324	324
Frequency (%)	88	54	55	70	76	53	74	24	49	37
Abundance	5.33	3.13	3.64	2.19	6.79	5.46	5.96	3.75	2.37	2.33
Density	4.70	1.70	2.02	1.54	5.19	2.90	4.91	0.92	1.17	0.86

**Localities – Tenerife :** 1.- Cueva de los Camarones; 2, 5, 9 and 10.- El Palm-Mar; 3 and 7.- La Arenita; 4 and 6.- Punta del Bocinero; 8.- Cueva de La Rasca.

## DISCUSSION

*Halophiletum decipiens* constitutes an important submerged community in the Canary Islands, which is probably spread on the sea bottom of all islands. This expansion seems to be related to the combined effect of some environmental factors, among them seawater temperature and substrate characteristics. In Tenerife, we have noticed an increase of the populations in the vicinity of fish cages for aquaculture farming.

In the Canary Islands as in other places [Ceccherelli *et al.*, 2000; Ceccherelli & Campos, 2002; Famà *et al.*, 2000; Modena *et al.*, 2000; Piazzini *et al.*, 2001; Verlaque *et al.*, 2000, 2003, 2004] we have noticed an important change in the floristic composition of the community because of the progressive expansion of the invasive chlorophyta *Caulerpa racemosa* var. *cylindracea*.

Because of the importance of this particular habitat, nowadays endangered because disturbance and introduction of an invasive algae, we call the attention in order to control the fish cages expansion and its possible relation to nutrients increase.

## ACKNOWLEDGEMENTS

The authors wish to thank a D. G. González; A. Sancho; R. Linares, R. Herrera, F. Espino and Julio Afonso-Carrillo.

## REFERENCES

- BELL, J.D. & WESTOBY, M. (1989). Abundance of macrofauna in dense seagrass is due to habitat preference, not predation. *Oecologia*, 68: 205-209.
- BETANCORT VILLALBA, M.J., GONZÁLEZ HENRÍQUEZ, M.N., HAROUN TABRAUE, R., HERRERA PÉREZ, R., SOLER ONÍS, E. & VIERA RODRÍGUEZ, M.A. (1995). Adiciones corológicas a la flora marina de Canarias. *Bot. Macaronésica*, 22: 75-89.
- BOC 2001/097. Boletín Oficial de Canarias nº 97 del 1.08.2001. Decreto 151 / 2001 de 23 de Julio por el que se crea el "Catálogo de especies amenazadas de Canarias".
- BRAUN BLANQUET, J. (1979). *Fitosociología. Bases para el estudio de las comunidades vegetales*. H. Blume. Ed. Madrid. (Traducción al español).
- CECHERELLI, C., PIAZZI, L. & CINELLI, F. (2000). Response of non-indigenous *Caulerpa racemosa* (Forsskal) J. Agardh to the native seagrass *Posidonia oceanica* (L.) Delile: effect of density of shoots and orientation of edges of meadows. *J. Exp. Mar. Biol. Ecol.*, 243: 227-240.
- CECHERELLI, C. & CAMPOS, D. (2002). Different effects of *Caulerpa racemosa* on two co-occurring seagrasses in the Mediterranean. *Bot. Marina*, 45: 71-76.
- DAVIS, B.C. & FOURQUREAN, J.W. (2001). Competition between the tropical alga, *Halimeda incrassata*, and the seagrass, *Thalassia testudinum*. *Aquat. Bot.*, 71: 217-232.
- DAWES, C.J. (1986). *Botánica Marina*. Ed. Limusa. México. 673 pp.
- DAWES, C.J. (1998). *Marine Botany*. John Wiley & Sons, Inc. New York... 2<sup>nd</sup> ed. Unidet States of America. 480 pp.
- den HARTOG, C. (1970). *The seagrasses of the world*. North-Holland Pub., Amsterdam. 275 pp.
- den HARTOG, C. (1971). The dynamic aspect in the ecology of seagrass communities. *Thalassia Jugosl.*, 7: 101-112.
- DUARTE, C.M. & CHISCANO, C.L. (1999). Seagrass biomass and production: a reassessment. *Aquat. Bot.*, 65: 159-174.
- EUROPEAN COMMISSION, DG ENVIRONMENT (1999). *Natura 2000. Interpretation manual of European Union habitats*. Eur. 15/2. 119 pp.
- FAMÀ, P., OLSEN, J.L., STAM, W.T. & PROCACCINI, G. (2000). High levels of intra-and inter-individual polymorphism in the rDNA ITS1 of *Caulerpa racemosa* (Chlorophyta). *Eur. J. Phycol.*, 35: 349-356.
- GIL-RODRÍGUEZ, M.C. & CRUZ SIMÓ, T. (1982). *Halophila decipiens* Ostenfeld (Hydrocharitaceae) una fanerógama marina nueva para el Atlántico Oriental. *Vieraea*, 11: 207-216.
- GIL-RODRÍGUEZ, M.C., AFONSO-CARRILLO, J. & WILDPRET DE LA TORRE, W. (1982). Occurrence of *Halophila decipiens* Ostenfeld on Tenerife, Canary Islands. *Aquat. Bot.*, 12: 205-207.
- GUIRY, M.D. & NIC DHONNCHA, E. (2004). AlgaeBase version 2.1. World-Wide electronic publication, National University of Ireland, Galway. <http://www.algabase.org>



- HAROUN, R., GIL-RODRÍGUEZ, M.C., DÍAZ DE CASTRO, J. & PRUD' HOMME VAN REINE, W.F. (2002). A Checklist of the marine plants from the Canary Islands, Central Eastern Atlantic Ocean). *Bot. Marina*, 45: 139-169.
- HAROUN, R., GIL-RODRÍGUEZ, M.C. & WILDPRET DE LA TORRE, W. (2003). *Plantas Marinas de las Islas Canarias*. Ed. Canseco. 319 pp.
- HEMMINGA M.A. & DUARTE, C.M. (2000). *Seagrass Ecology*. Cambridge Univ. Press, Cambridge. 298 pp.
- HERNÁNDEZ-GONZÁLEZ, C.L. & GIL-RODRÍGUEZ, M.C. (1993). Nuevas citas para la flora marina de la isla de La Palma, Islas Canarias). *X Simposio Nacional de Botánica Criptogámica*. Universidad de La Laguna. Tenerife, Islas Canarias. 44 pp.
- HUISMAN, J.M. (2000). *Marine Plants of Australia*. University of Western Australia Press, Nedlands, Western Australia. 300 pp.
- LARKUM, A.W.D., MCCOMB, A.J. & SHEPERD, S.A. (1989). *Biology of Seagrasses. A treatise on the biology of seagrasses with references to the Australian region*. Amsterdam, Elsevier. 841 pp.
- LITTLER, D. S. & LITTER, M. M. (2000). *Caribbean Reef Plants. An identification guide to the reefplants of the Caribbean, Bahamas, Florida and Gulf of Mexico*. Offshore Graphics, Inc. Washington DC. 542 pp.
- McROY C.P. & McMILLAN, C. (1977). *Production ecology and physiology of seagrasses. Seagrass ecosystems: a scientific perspective*. New York C.P. Mc Roy and C. Helfferich, pp. 53-87.
- MODENA, M., MATRICARDI, G., VACCHI, M. & GUIDETTI, P. (2000). Spreading of *Caulerpa racemosa* (Forsskal) J. Agradh (Bryopsidaceae, Chlorophyta) along the coast of the Ligurian Sea. *Cryptogamie, Algol.*, 21: 301-304.
- MOREIRA-REYES, A., MONTERROSO, O., AGUIRRE, H., CRUZ-REYES, A., GIL-RODRÍGUEZ, M.C. & NÚÑEZ, J. (2004). Diversidad y estructura de *Halophiletum decipiens* en el LIC sebadales de San Andrés (ES 7020120), Tenerife, islas Canarias. *Rev. Acad. Can. de Ciencias.*, XV, 3-4: 143-158.
- OLIVEIRA DE, E.C., PIRANI J.R. & GIULIETTI, A.M. (1983). The Brazilian seagrasses. *Aquat. Bot.*, 16: 251-267.
- PAYRI, C., N'YEURT, A.D.R. & OREMPULLER, J. (2000). *Algae of French Polynesia. Algues de Polynésie Française*. Au Vent des Iles Editions-Tahiti. 187 pp.
- PAVON-SALAS, N., HERRERA, R., HERNÁNDEZ-GUERRA, A. & HAROUN, R. (2000). Distributional pattern of seagrasses in the Canary Islands, Central-East Atlantic Ocean). *J. Coastal Research*, 16: 329-335.
- PIAZZI, L., CECCHERELLI, G. & CINELLI, F. (2001). Threat to macroalgal diversity: effects of the introduced green alga *Caulerpa racemosa* in the Mediterranean. *Mar. Ecol. Prog. Ser.*, 210: 149-159.
- RIVAS-MARTÍNEZ, S., FERNÁNDEZ GONZÁLEZ, F., LOIDI, J., LOUSÁ, M. & PENAS, A. (2001). Sintaxonomical checklist of vascular plant communities of Spain and Portugal to association level. *Itinera Geobotánica*, 14: 5-341.



- RIVAS-MARTÍNEZ, S., DÍAZ, T.E., FERNÁNDEZ-GONZÁLEZ, F., IZCO, J., LOIDI, J., LOUSÃ, M. & PENAS, A. (2002). Vascular. Plant communities of Spain and Portugal. Addenda to the syntaxonomical Checklist of 2001. *Itinera Geobotánica*, 15: 115-116.
- VERLAQUE, M., BOUDOURESQUE, C.F., MEINESZ, A. & GRAVEZ, V. (2000). The *Caulerpa racemosa* Complex, Caulerpales, Ulvophyceae) in the Mediterranean Sea. *Bot. Marina*, 43: 49-68.
- VERLAQUE, M., DURAND, C., HUISMAN J.M., BOUDOURESQUE, C.F. & LE PARCO Y. (2003). On the identity and origin of the Mediterranean invasive *Caulerpa racemosa* (Caulerpales, Chlorophyta). *Eur.J. Phycol.*, 38: 325-339.
- VERLAQUE, M., AFONSO-CARRILLO, J., GIL-RODRÍGUEZ M.C., DURAND, C., BOUDOURESQUE, CH.F. & LE PARCO, Y., (2004). Blitzkrieg in a marine invasion: *Caulerpa racemosa* var. *cylindracea* (Bryopsidales, Chlorophyta) reaches the Canary Islands, (north-east Atlantic). *Biological Invasions*, 6: 269-281.
- WOMERSLEY, H.B.S. (1984). *The marine benthic flora of southern Australia. Part.I.* Government Printer, South Australia, Adelaide. 329 pp.
- YOUNG, P.C. (1978). Moreton Bay, Queensland: A nursey area for juvenile penaeid prawns. *Aust. J. Mar. Freshw. Res.*, 29: 55-75.