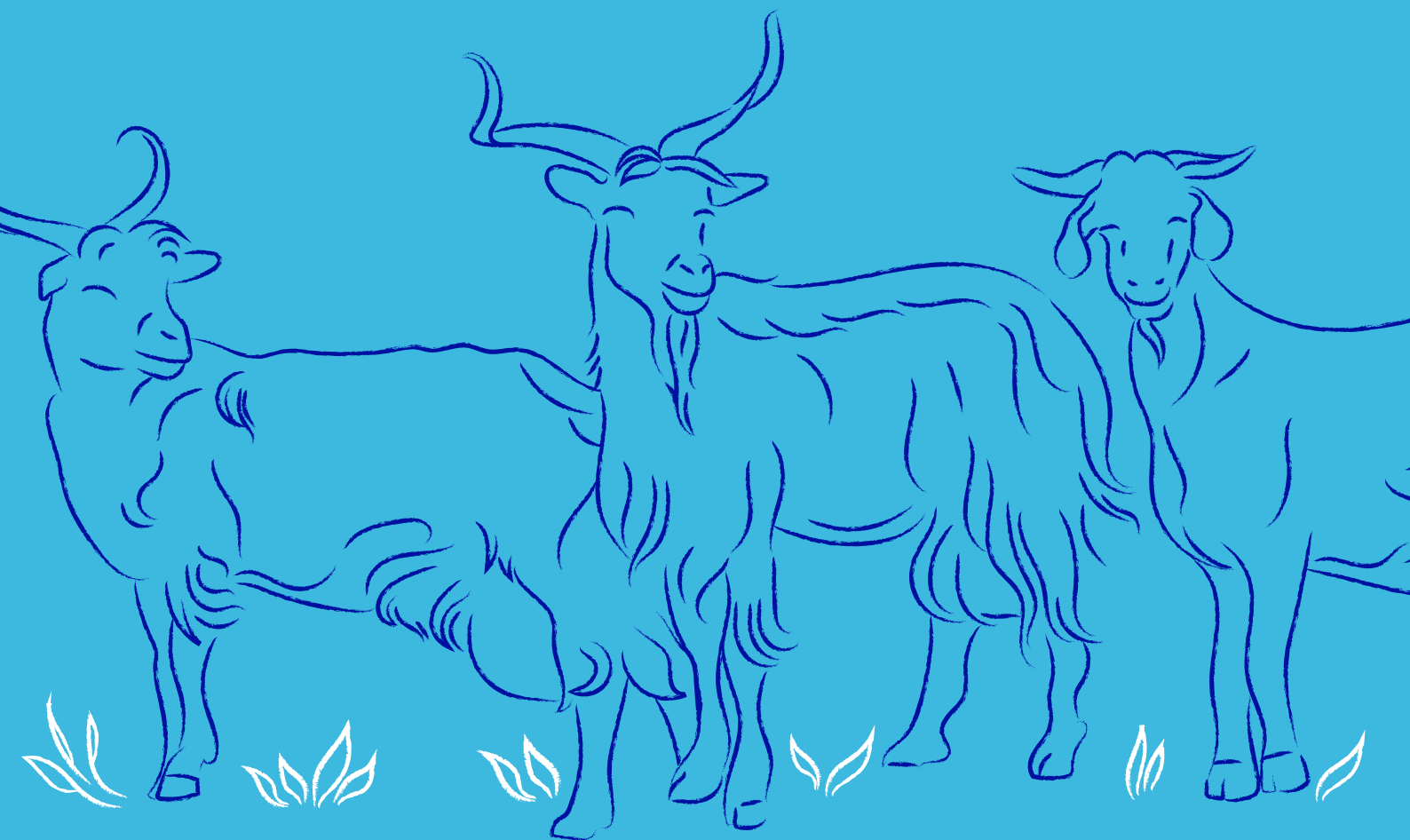


International Goat Association (IGA)

Regional Conference 2025



ISBN 978-84-120939-8-8

Editorial: INSTITUTO CANARIO DE INVESTIGACIONES AGRARIAS (ICIA).

Autor: Varios autores.

Editores: Alexandra Torres, Anastasio Arguello, Sergio Álvarez.

Congreso: International Goat Association (IGA). Regional Conference 2025 (España).

Número de edición: 1

Fecha de edición: 17/05/2025

País de Edición: España.

Goats' Sensory Responses to Colour and Shape: Preliminary results

Gutierrez Exposito, YN; Morales de la Nuez, A; González -Cabrera, M; Hernández -Castellano, LE;
Castro, N noemi.castro@ulpgc.es and Argüello, A

IUSA-ONEHEALTH 4 Animal Production and Biotechnology Group, Institute of Animal Health and Food Safety, Universidad de Las Palmas de Gran Canaria, (Campus Montaña Cardones, s/n, 35413, Arucas) Spain.

KEY WORDS: SENSORY DEVELOPMENT, ENVIRONMENTAL ENRICHMENT, BEHAVIOUR

Goat's adaptation to the environment is well known due to their sensory development. In the wild, these animals face numerous stimuli and challenges that require them to have strong adaptive capacities. However, in captivity, they may experience boredom or frustration, which can lead to stereotypic behaviors.

The objective of this study was to observe and provide a comprehensive analysis of the preferences shown by adult goats towards different colours and shapes used as environmental enrichment. To do that, 17 multiparous lactating dairy goats were used to test six enrichment designs consisting of three shapes (cylinder, cube and sphere) of two different colours (green and purple). Each design was introduced in the barn for three minutes and video was recorded to measure the number of contacts and time spent by the goats in the different areas (low, medium and high interest). Despite the longer interaction with the purple shapes, the goats spent more time in the high interest area of the pen when the green shapes were introduced. Thus, it cannot be concluding a clear preference or rejection towards the colour or shape used. However further research using a larger number of animals for a longer time and different shapes and colours would be necessary to improve the knowledge and apply it to the environmental enrichment in caprine farms.