

1,037 Buildings

244 Single Houses

18 Libraries

63 Schools

8 Embassies

653 Architects

11 Art Galleries

28 Hotels

76 Museums

6 Railway Stations

6 Geographical Regions

7 Swimming Pools

2 Town Halls

57 Office Buildings

38 Universities

8 International Airports



89 Countries

THE PHAIDON ATLAS OF 21ST CENTURY WORLD ARCHITECTURE



30°

15°

0°

15°

30°

45°

60°

75°

90°

Phaidon Press Limited
Regent's Wharf
All Saints Street
London N1 9PA

Phaidon Press Inc.
180 Varick Street
New York, NY 10014

www.phaidon.com

First published 2008
© 2008 Phaidon Press Limited

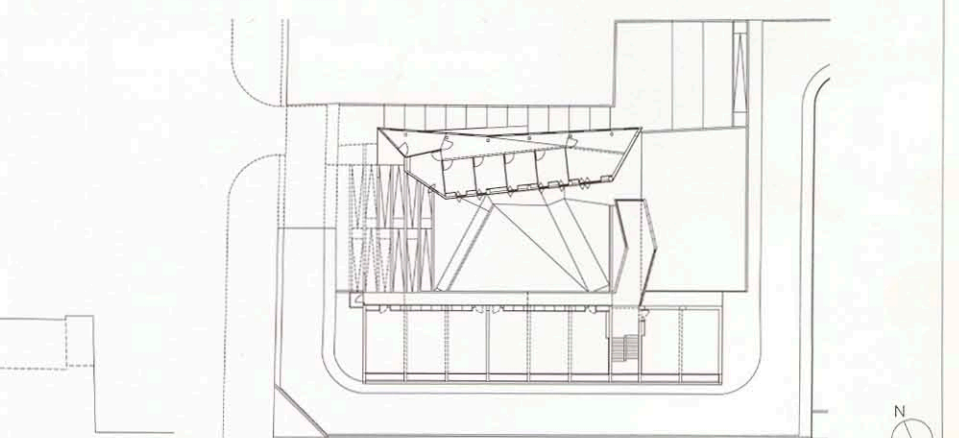
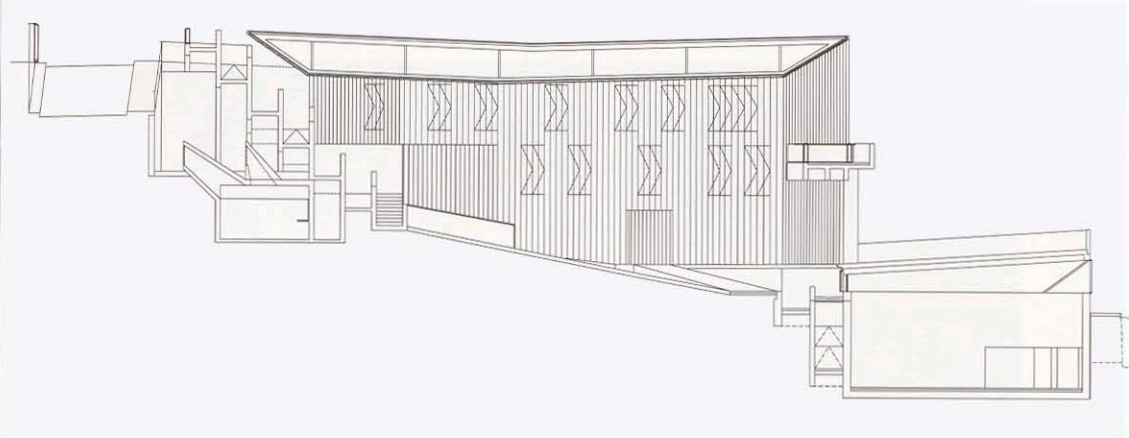
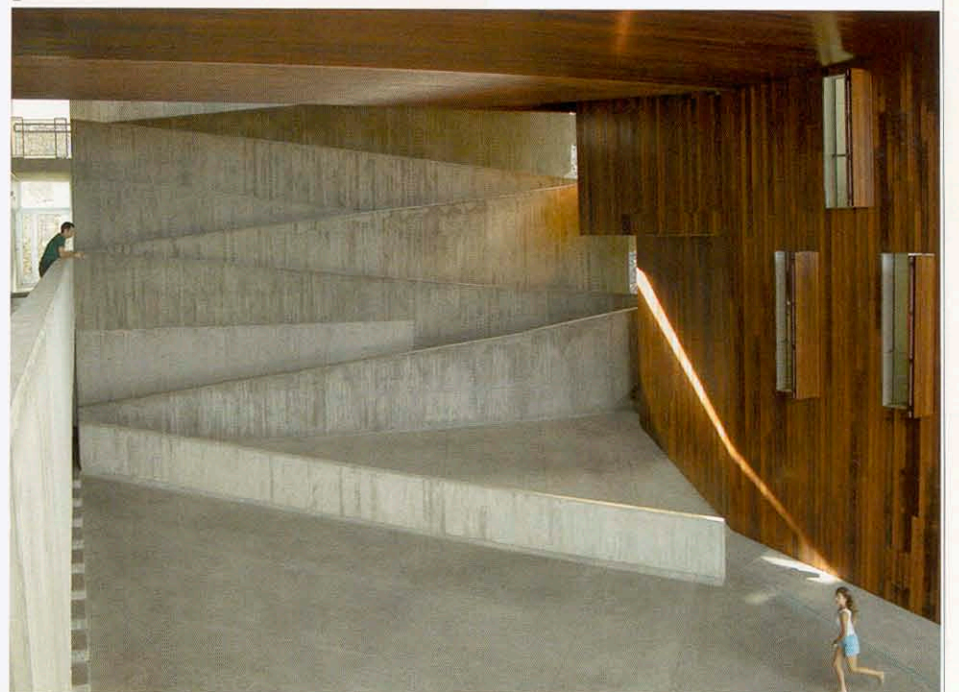
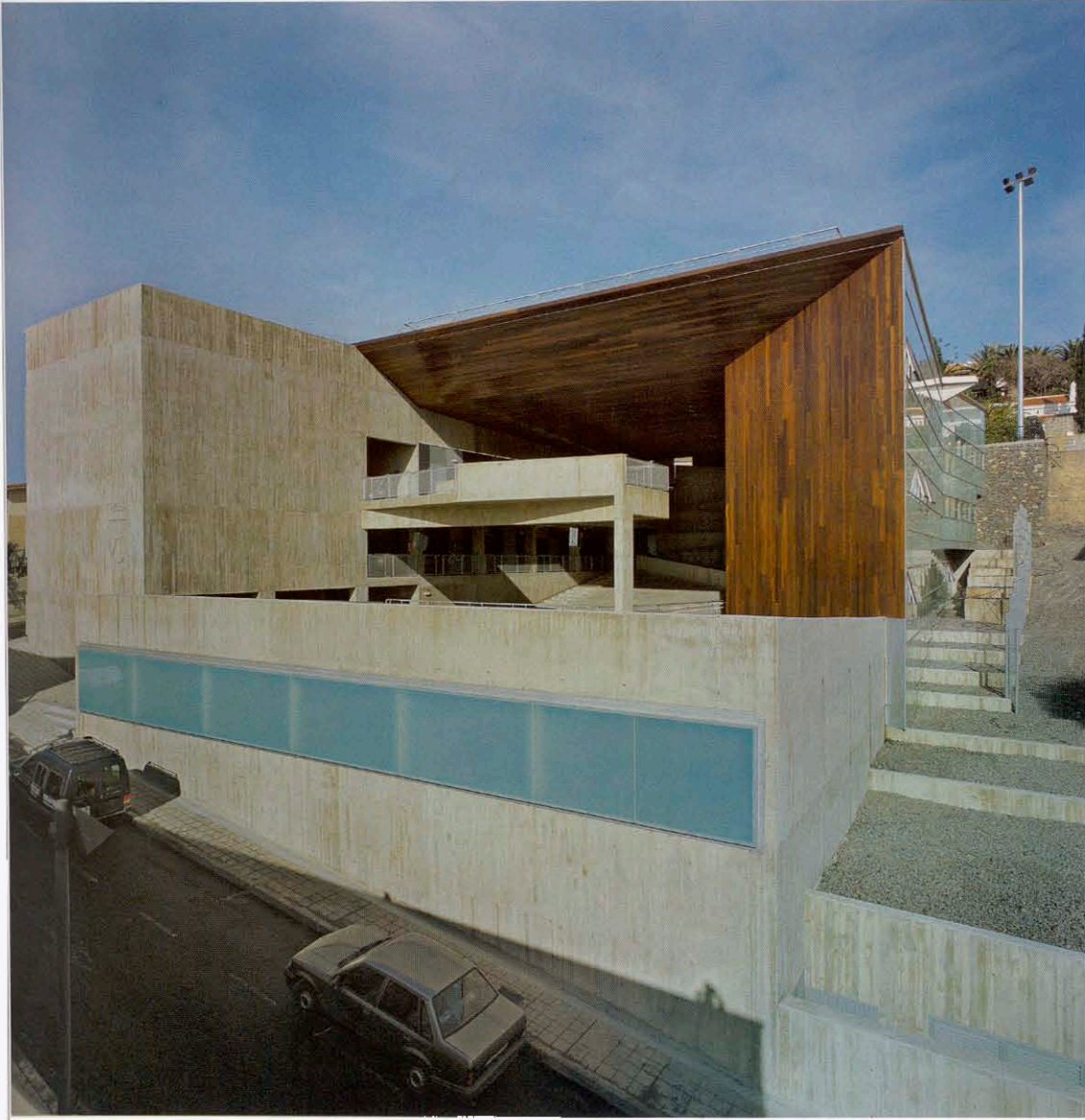
ISBN 978 0 7148 4874 7

A CIP catalogue record for this book is available from
the British Library.

All rights reserved. No part of this publication may be
reproduced, stored in a retrieval system or transmitted
in any form or by any means, electronic, mechanical,
photocopying, recording or otherwise, without the
written permission of Phaidon Press Limited.

Concept design by Hamish Muir adapted by Julia Hasting
Designed by Sonya Dyakova with Lucy Newell
Maps by Bruno Moser

Printed in China



0509 Located in a hillside residential neighbourhood to the west of Tenerife's capital, this concrete-framed complex of multipurpose rooms and open spaces enjoys sweeping views over the city and out to the ocean. The principal interiors are stacked on either side of a covered courtyard that projects out to form the roof of a black box theatre at the base of the site. The courtyard and the deck on its canopy may both be used as stages. They and the intermediate levels are linked by poured concrete ramps that zigzag down the steep slope from

the street. The spaces to either side are densely landscaped to provide a green buffer between the school and its neighbours. Lavatories at the base of the hill are naturally lit from tapered concrete lanterns. The north wing contains administrative offices on the upper level and a stepped library doubling as a lecture hall on the lower level. The facade, with its hinged shutters, and the underside of the canopy over the courtyard are faced in ipe wood. Ipe wood is also employed for the floor and book stacks in the library. The outer edge of the

wing and canopy are splayed to create a proscenium arch framing the courtyard. The opposite wing contains classrooms and rehearsal rooms, and its concrete columns are clad in a grid of multi-toned grey composition panels set flush on both sides to enclose wall storage. A gallery supported on a single column projects out from this wing at a right angle to mark the edge of the courtyard. Throughout, the shifting levels and varied perspectives transform the entire building into a flexible performance space.

- 1 East facade
- 2 Exterior view from north
- 3 Interior view of courtyard
- 4 North wall of interior courtyard
- 5 Zigzag concrete ramps
- 6 Section through building
- 7 Second-floor plan

Client
 Tenerife Town Hall; Government of the Canary Islands: Council of Education, Culture and Sports
Area
 3,360 m²/36,167 sq ft
Cost
 €4,171,200
Coordinates
 28.4603 -16.2792