

# THE ARCHITECTURAL REVIEW

WWW.ARPLUS.COM

UK £6.95/€12 USA/CAN \$19.75 DECEMBER 2003



## EMERGING ARCHITECTURE



**SUBSCRIPTIONS & BACK ISSUES**

To subscribe please use the card in this issue  
 Tel: +44 (0)1858 438 847  
 Fax: +44 (0)1858 461 739  
 Email: ARE@subscription.co.uk  
 UK £ 69  
 UK student £ 55  
 Europe € 115.50  
 Americas \$ 108  
 Rest of world £ 105  
 American copies are air speeded to New York  
 For back issues:  
 Tel: +44 (0)20 7505 6622  
 Fax: +44 (0)20 7505 6606  
 Email: BREbookshop@emap.com

**NON DELIVERY OF ISSUES & CHANGES OF ADDRESS**

Contact: Tower Publishing  
 Tel: +44 (0)1858 438 847  
 Fax: +44 (0)1858 461 739  
 Email: ARE@subscription.co.uk  
 You can also write to: AR subscriptions,  
 Tower House, Sovereign Park, Market  
 Harborough, LE16 9EF, UK  
 American subscribers – contact The  
 Architectural Review, c/o PSMJ Resources Inc,  
 PO Box 95120, Newton MA 02495, USA.  
 Tel: +1 617 965 0055 Fax: +1 617 965 5152

**BOUND VOLUMES**

Bound volumes (UK only): contact  
 John Lawrence. Tel: 01234 346692

The Architectural Review (ISSN 0003-861X) is published  
 monthly for \$108 per year by EMAP, Royal Mail  
 International c/o Smartmail, 140 58th Street, Suite 2B,  
 Brooklyn, NY 11220-2521. Periodicals postage paid at  
 Brooklyn NY and additional mailing offices. Postmaster: send  
 address changes to The Architectural Review, c/o PSMJ  
 Resources Inc., PO Box 95120, Newton, MA 02495.

**THE ARCHITECTURAL  
 REVIEW**

www.arplus.com

**FOUNDED 1896**

Published monthly  
 Emap Construct, 151 Rosebery Avenue,  
 London, EC1R 4GB, England.  
 Email: lynne.jackson@ebc.emap.com  
 Fax: 020 7505 6701

**EDITORIAL**

**Editorial Director and Editor**  
 PETER DAVEY 020 7505 6725  
**Managing Editor**  
 CATHERINE SLESSOR 020 7505 6726  
**Art Editor**  
 MICHAEL HARDAKER 020 7505 6727  
**Assistant Editor**  
 ROB GREGORY 020 7505 6728  
**Production Editor**  
 JULIA DAWSON 020 7505 6729  
**Editorial Co-ordinator**  
 LYNNE JACKSON 020 7505 6725

**ADVERTISING**

**Sales Manager**  
 Stephanie Rauscher +44 (0)20 7505 6859  
**Senior Account Executive**  
 James Hutchinson +44 (0)20 7505 6742  
**Italian Advertising Sales, Milan**  
 Carlo Fiorucci  
 Tel: +39 (0)2 58310219; fax: +39 (0)2 58315710  
**US Advertising Sales, New York**  
 Kate Buckley  
 Tel: +1 212 223 4996  
 Email: buckley@moveworld.com  
**Production Manager**  
 Sharon Parham 020 7505 6874  
**Marketing Manager**  
 Zoe Phillips 020 7505 6615  
**Sales Director**  
 Andrew Knight  
**Publisher**  
 Jonathan Stock  
**Group Editorial Director**  
 Paul Finch  
**Managing Director**  
 Graham Harman  
**List rental:** Jonathan Burston  
 at Uni-Marketing  
 Tel: +44 (0)208 995 1919  
 Email: jburston@uni-marketing.com

ABC circulation 21 306  
 © Emap Construct 2003



Bus station by NIO Architecten (p38)

Look-out tower by Ville Hara (p42)

Winter gardens by Pierre Thibault (p50)

**EMERGING ARCHITECTURE**

**VIEW**

24 Unveiling of the Kunsthau, Graz; ar+d at the RIBA; AR conference on intervention

**VIEW FROM PITTSBURGH**

30 By Raymund Ryan

**COMMENT**

35 ar+d celebrates tectonic qualities

**EMERGING ARCHITECTURE**

**Prizewinners**

38 Bus station, Hoofddorp, the Netherlands NIO ARCHITECTEN  
 42 Look-out tower, Helsinki, Finland VILLE HARA WITH HUT WOOD STUDIO  
 46 Cultural centre, Los Silos, Tenerife, Spain GPY ARQUITECTOS  
 50 Winter gardens, Quebec, Canada PIERRE THIBAUT

**Highly commended**

52 House, Surrey, England LAURIE CHETWOOD  
 55 House, Shizuki Castle, Yamaguchi Prefecture, Japan SAMBUICHI ARCHITECTS  
 58 Villa/gallery, Karuizawa, Japan MAKOTO YAMAGUCHI

**Commended**

60 Graveyard extension, Armea di Sanremo, Italy ALDO AMORETTI & MARCO CALVI ARCHITETTI  
 63 House, La Escondida Beach, Cañete, Peru BARCLAY & CROUSSE  
 66 Castle conversion, Vlotho, Germany LOMA  
 68 House, near Beijing, China EDGE DESIGN  
 70 Prototype distillery unit, Pecaya, Venezuela RAFAEL MATTAR NERI  
 71 Exhibition pavilions, Bologna, Italy MARIO CUCINELLA ARCHITECTS  
 72 Craft potters building, Hagi, Yamaguchi Prefecture, Japan SAMBUICHI ARCHITECTS  
 74 Meeting place, near Bärnau, German-Czech border BRÜCKNER & BRÜCKNER ARCHITEKTEN

**Editor's choice**

76 Crematorium, Gujarat, India MATHAROO ASSOCIATES  
 78 Mixed-use building, Vienna, Austria DELUGAN\_MEISSL ARCHITEKTURBÜRO  
 80 School, Fredrikstad, Norway PIR II/LEWIS POTIN LEWIS  
 83 Church, Filadelfia, Costa Rica JAE CHA

**PRODUCT REVIEW**

89 Exterior envelope

**BOOKS**

96 Paul Rudolph; Scully; organizational complex; factory; Australian landscape

**DELIGHT**

98 House, Plettenberg Bay, Western Cape, South Africa SETH STEIN ARCHITECTS

ar+d PRIZEWINNER  
CULTURAL CENTRE, LOS SILOS,  
TENERIFE, SPAIN  
ARCHITECT  
GPY ARQUITECTOS



## SHEDDING LIGHT

**A new community centre between two small squares in Tenerife ingeniously interprets the strong light and adds to the public realm.**

1  
Community building allows little chapel to continue to dominate square, while ...

2  
... being very tough and direct.

Los Silos is a little town on the north-western slope of the island of Tenerife, and if you landed there after a blindfolded journey, you might think you were in a provincial Spanish settlement, rather than on an island in the Atlantic some 100km from the north-west coast of Africa. One of the main public spaces in Los Silos is Plaza San Bernardo, where GPY have built their cultural centre.

It serves the whole community and has to offer a very wide range of functions: an assembly hall, a place for conferences, exhibitions and small performances, as well as

providing spaces for a library and continuing education. GPY Arquitectos responded to the brief with what is essentially a very simple building on a tight 15m square site. At the level of the San Bernardo plaza is the general purpose hall. To the north is a new public space, the Plaza Príncipe de Asturias, which is lower than San Bernardo, so the building can be at two levels on the Asturias side, with the lower one being devoted to workshops that can be amalgamated as a single space or used as three separate ones.



Next to the new building is the little, modest, but tough (though elegant) San Bernardo chapel, white and Spanish colonial, in a timeless Counter-Reformation style that can be seen from Cadiz to Cartagena. GPY's cultural centre is just as tough (or even tougher), but it politely allows the chapel to continue to command the square, while having a strong presence of its own. Facing on to the square is a blank wall of beton brut and wood with, between the centre and the chapel, a welcoming but mysterious and cavernous entrance.



In good weather, the wooden wall can be folded back to make the assembly room a generous roofed extension of the Plaza San Bernardo, becoming almost a loggia, with dramatic views of the landscape through the mullionless glass north wall. The hall roof has an ingenious section of Z-shaped elements that filter sky light, so the interior is flooded with sunshine that has been modified to avoid glare, while still projecting patterns of light and shade on floor and walls. Down on the Plaza Principe de Asturias, beton brut is little modified: very tough, but a not uncivilized contribution to the new square.

While some jury members had reservations about this side of the

building, we were all entranced by the notion of a hall that can become a part of a square, and by the way in which the subtropical light is so carefully and discreetly modified by the ingenious section.

**Architect**

GPY Arquitectos, Santa Cruz de Tenerife

**Project team**

Juan Antonio González Pérez, Urbano Yanes Tuña, Constanze Sixt, José Domingo Bethencourt, José Miguel Navarro

**Structural engineer**

Arcal S. L.

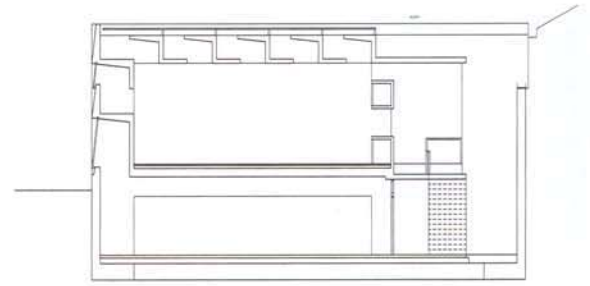
**Photographs**

Miguel de Guzmán, José Ramón Oller

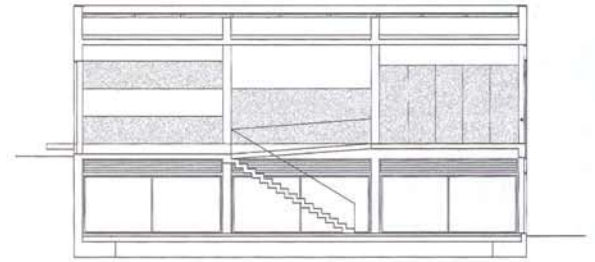
3 Folding timber wall can be drawn back to make centre part of square.

4 Tough as the mountain behind it.

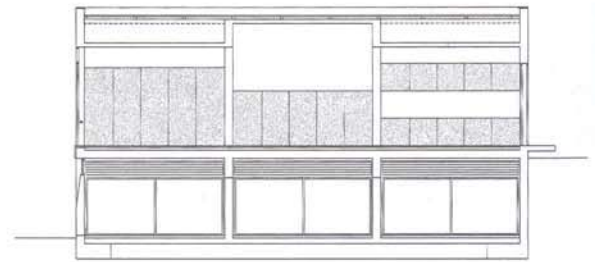
5 Light ingeniously modified by Z-shaped wall and roof details.



cross section



longitudinal section through stairs



longitudinal section through hall

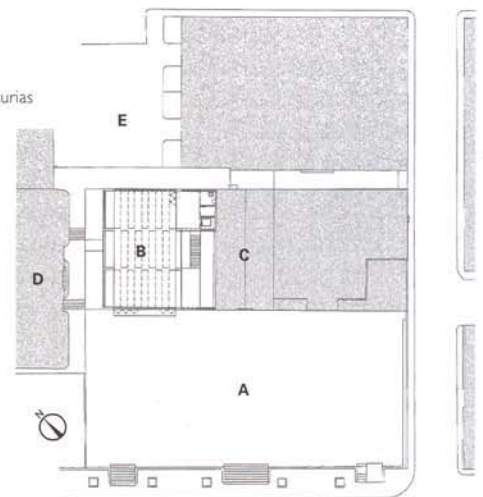


3



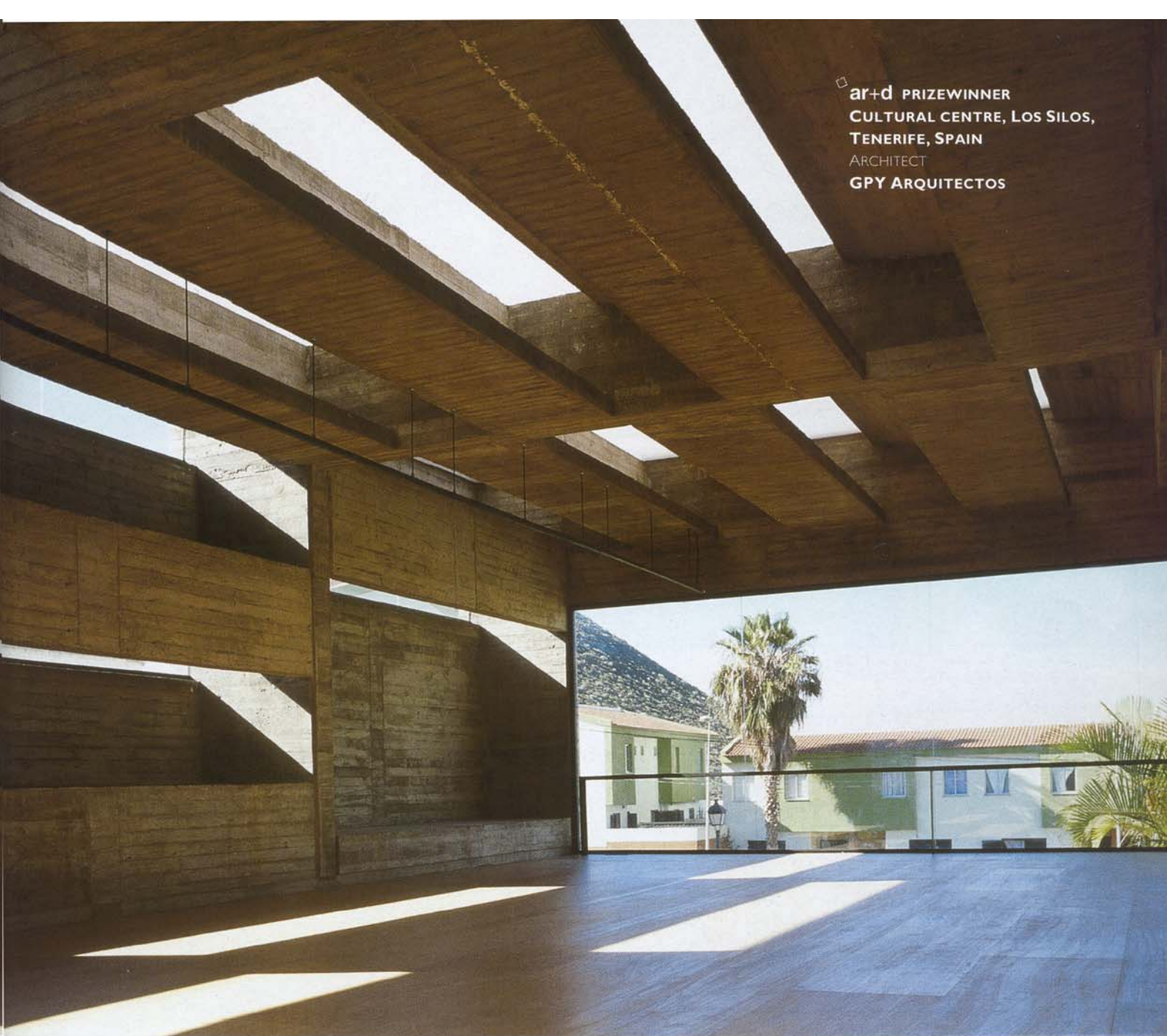
4

- A Plaza San Bernardo
- B community centre
- C church
- D school
- E Plaza Príncipe de Asturias

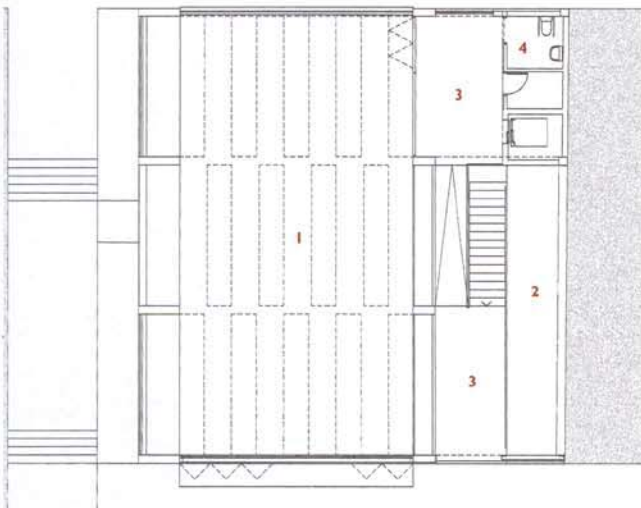


site plan

ar+d PRIZEWINNER  
 CULTURAL CENTRE, LOS SILOS,  
 TENERIFE, SPAIN  
 ARCHITECT  
 GPY ARQUITECTOS

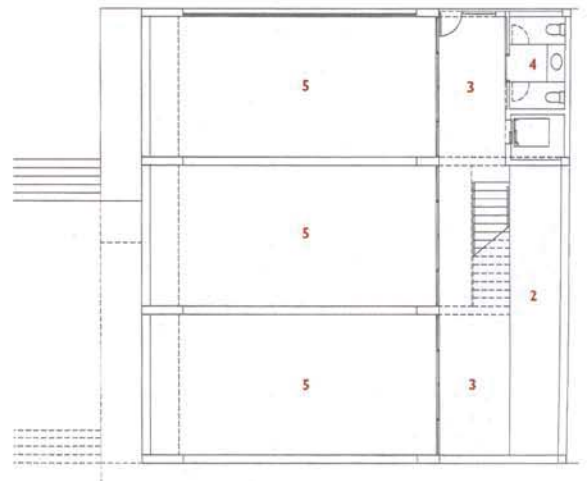


5



upper level plan (scale 1:330)

- 1 hall
- 2 patio
- 3 foyer
- 4 lavatory
- 5 workshop



lower level plan