

# THE ARCHITECTURAL REVIEW

WWW.ARPLUS.COM

UK £6.95/€12 USA/CAN \$19.75 DECEMBER 2003



## EMERGING ARCHITECTURE



**SUBSCRIPTIONS & BACK ISSUES**

To subscribe please use the card in this issue  
 Tel: +44 (0)1858 438 847  
 Fax: +44 (0)1858 461 739  
 Email: ARE@subscription.co.uk  
 UK £ 69  
 UK student £ 55  
 Europe € 115.50  
 Americas \$ 108  
 Rest of world £ 105  
 American copies are air speeded to New York  
 For back issues:  
 Tel: +44 (0)20 7505 6622  
 Fax: +44 (0)20 7505 6606  
 Email: BREbookshop@emap.com

**NON DELIVERY OF ISSUES & CHANGES OF ADDRESS**

Contact: Tower Publishing  
 Tel: +44 (0)1858 438 847  
 Fax: +44 (0)1858 461 739  
 Email: ARE@subscription.co.uk  
 You can also write to: AR subscriptions,  
 Tower House, Sovereign Park, Market  
 Harborough, LE16 9EF, UK  
 American subscribers – contact The  
 Architectural Review, c/o PSMJ Resources Inc,  
 PO Box 95120, Newton MA 02495, USA.  
 Tel: +1 617 965 0055 Fax: +1 617 965 5152

**BOUND VOLUMES**

Bound volumes (UK only): contact  
 John Lawrence. Tel: 01234 346692

The Architectural Review (ISSN 0003-861X) is published  
 monthly for \$108 per year by EMAP, Royal Mail  
 International c/o Smartmail, 140 58th Street, Suite 2B,  
 Brooklyn, NY 11220-2521. Periodicals postage paid at  
 Brooklyn NY and additional mailing offices. Postmaster: send  
 address changes to The Architectural Review, c/o PSMJ  
 Resources Inc., PO Box 95120, Newton, MA 02495.

**THE ARCHITECTURAL REVIEW**

www.arplus.com

**FOUNDED 1896**

Published monthly  
 Emap Construct, 151 Rosebery Avenue,  
 London, EC1R 4GB, England.  
 Email: lynne.jackson@ebc.emap.com  
 Fax: 020 7505 6701

**EDITORIAL**

**Editorial Director and Editor**  
 PETER DAVEY 020 7505 6725  
**Managing Editor**  
 CATHERINE SLESSOR 020 7505 6726  
**Art Editor**  
 MICHAEL HARDAKER 020 7505 6727  
**Assistant Editor**  
 ROB GREGORY 020 7505 6728  
**Production Editor**  
 JULIA DAWSON 020 7505 6729  
**Editorial Co-ordinator**  
 LYNNE JACKSON 020 7505 6725

**ADVERTISING**

**Sales Manager**  
 Stephanie Rauscher +44 (0)20 7505 6859  
**Senior Account Executive**  
 James Hutchinson +44 (0)20 7505 6742  
**Italian Advertising Sales, Milan**  
 Carlo Fiorucci  
 Tel: +39 (0)2 58310219; fax: +39 (0)2 58315710  
**US Advertising Sales, New York**  
 Kate Buckley  
 Tel: +1 212 223 4996  
 Email: buckley@moveworld.com  
**Production Manager**  
 Sharon Parham 020 7505 6874  
**Marketing Manager**  
 Zoe Phillips 020 7505 6615  
**Sales Director**  
 Andrew Knight  
**Publisher**  
 Jonathan Stock  
**Group Editorial Director**  
 Paul Finch  
**Managing Director**  
 Graham Harman  
**List rental:** Jonathan Burston  
 at Uni-Marketing  
 Tel: +44 (0)208 995 1919  
 Email: jburston@uni-marketing.com

ABC circulation 21 306  
 © Emap Construct 2003



Bus station by NIO Architecten (p38)

Look-out tower by Ville Hara (p42)

Winter gardens by Pierre Thibault (p50)

**EMERGING ARCHITECTURE**

**VIEW**

24 Unveiling of the Kunsthau, Graz; ar+d at the RIBA; AR conference on intervention

**VIEW FROM PITTSBURGH**

30 By Raymund Ryan

**COMMENT**

35 ar+d celebrates tectonic qualities

**EMERGING ARCHITECTURE**

**Prizewinners**

38 Bus station, Hoofddorp, the Netherlands NIO ARCHITECTEN  
 42 Look-out tower, Helsinki, Finland VILLE HARA WITH HUT WOOD STUDIO  
 46 Cultural centre, Los Silos, Tenerife, Spain GPY ARQUITECTOS  
 50 Winter gardens, Quebec, Canada PIERRE THIBAUT

**Highly commended**

52 House, Surrey, England LAURIE CHETWOOD  
 55 House, Shizuki Castle, Yamaguchi Prefecture, Japan SAMBUICHI ARCHITECTS  
 58 Villa/gallery, Karuizawa, Japan MAKOTO YAMAGUCHI

**Commended**

60 Graveyard extension, Armea di Sanremo, Italy ALDO AMORETTI & MARCO CALVI ARCHITETTI  
 63 House, La Escondida Beach, Cañete, Peru BARCLAY & CROUSSE  
 66 Castle conversion, Vlotho, Germany LOMA  
 68 House, near Beijing, China EDGE DESIGN  
 70 Prototype distillery unit, Pecaya, Venezuela RAFAEL MATTAR NERI  
 71 Exhibition pavilions, Bologna, Italy MARIO CUCINELLA ARCHITECTS  
 72 Craft potters building, Hagi, Yamaguchi Prefecture, Japan SAMBUICHI ARCHITECTS  
 74 Meeting place, near Bärnau, German-Czech border BRÜCKNER & BRÜCKNER ARCHITEKTEN

**Editor's choice**

76 Crematorium, Gujarat, India MATHAROO ASSOCIATES  
 78 Mixed-use building, Vienna, Austria DELUGAN\_MEISSL ARCHITEKTURBÜRO  
 80 School, Fredrikstad, Norway PIR II/LEWIS POTIN LEWIS  
 83 Church, Filadelfia, Costa Rica JAE CHA

**PRODUCT REVIEW**

89 Exterior envelope

**BOOKS**

96 Paul Rudolph; Scully; organizational complex; factory; Australian landscape

**DELIGHT**

98 House, Plettenberg Bay, Western Cape, South Africa SETH STEIN ARCHITECTS

ar+d PRIZEWINNER  
CULTURAL CENTRE, LOS SILOS,  
TENERIFE, SPAIN  
ARCHITECT  
GPY ARQUITECTOS



## SHEDDING LIGHT

**A new community centre between two small squares in Tenerife ingeniously interprets the strong light and adds to the public realm.**

1  
Community building allows little chapel to continue to dominate square, while ...

2  
... being very tough and direct.

Los Silos is a little town on the north-western slope of the island of Tenerife, and if you landed there after a blindfolded journey, you might think you were in a provincial Spanish settlement, rather than on an island in the Atlantic some 100km from the north-west coast of Africa. One of the main public spaces in Los Silos is Plaza San Bernardo, where GPY have built their cultural centre.

It serves the whole community and has to offer a very wide range of functions: an assembly hall, a place for conferences, exhibitions and small performances, as well as

providing spaces for a library and continuing education. GPY Arquitectos responded to the brief with what is essentially a very simple building on a tight 15m square site. At the level of the San Bernardo plaza is the general purpose hall. To the north is a new public space, the Plaza Príncipe de Asturias, which is lower than San Bernardo, so the building can be at two levels on the Asturias side, with the lower one being devoted to workshops that can be amalgamated as a single space or used as three separate ones.



Next to the new building is the little, modest, but tough (though elegant) San Bernardo chapel, white and Spanish colonial, in a timeless Counter-Reformation style that can be seen from Cadiz to Cartagena. GPY's cultural centre is just as tough (or even tougher), but it politely allows the chapel to continue to command the square, while having a strong presence of its own. Facing on to the square is a blank wall of beton brut and wood with, between the centre and the chapel, a welcoming but mysterious and cavernous entrance.



In good weather, the wooden wall can be folded back to make the assembly room a generous roofed extension of the Plaza San Bernardo, becoming almost a loggia, with dramatic views of the landscape through the mullionless glass north wall. The hall roof has an ingenious section of Z-shaped elements that filter sky light, so the interior is flooded with sunshine that has been modified to avoid glare, while still projecting patterns of light and shade on floor and walls. Down on the Plaza Principe de Asturias, beton brut is little modified: very tough, but a not uncivilized contribution to the new square.

While some jury members had reservations about this side of the

building, we were all entranced by the notion of a hall that can become a part of a square, and by the way in which the subtropical light is so carefully and discreetly modified by the ingenious section.

**Architect**

GPY Arquitectos, Santa Cruz de Tenerife

**Project team**

Juan Antonio González Pérez, Urbano Yanes Tuña, Constanze Sixt, José Domingo Bethencourt, José Miguel Navarro

**Structural engineer**

Arcal S. L.

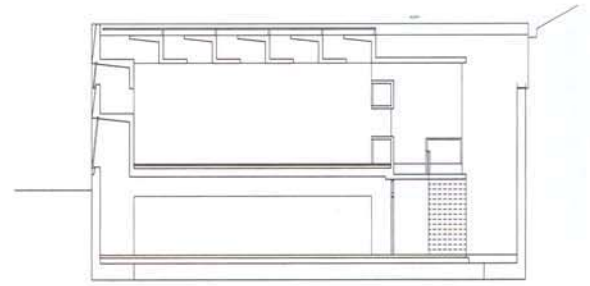
**Photographs**

Miguel de Guzmán, José Ramón Oller

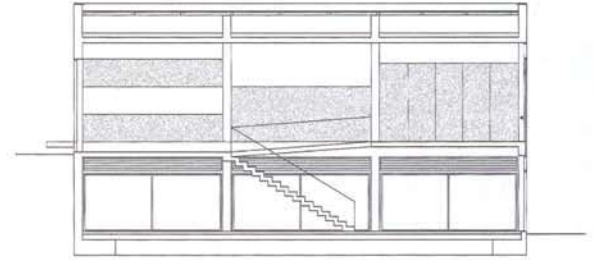
3 Folding timber wall can be drawn back to make centre part of square.

4 Tough as the mountain behind it.

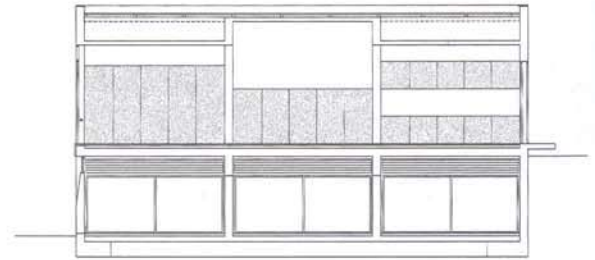
5 Light ingeniously modified by Z-shaped wall and roof details.



cross section



longitudinal section through stairs



longitudinal section through hall

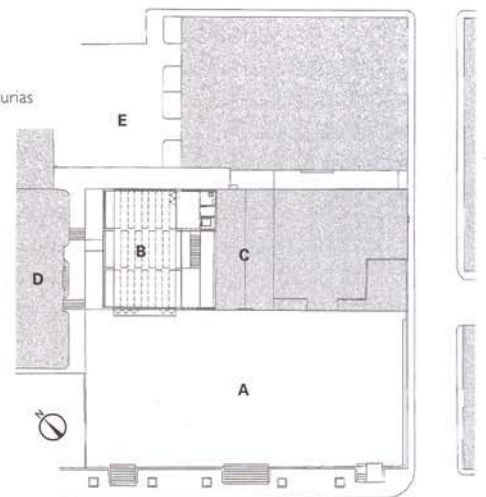


3



4

- A Plaza San Bernardo
- B community centre
- C church
- D school
- E Plaza Príncipe de Asturias

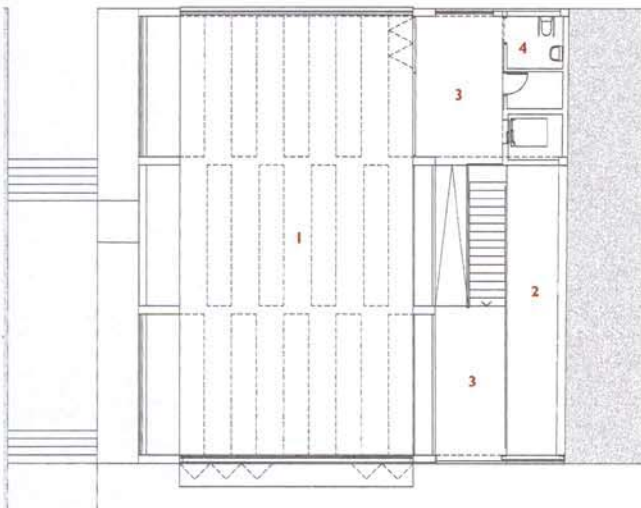


site plan

ar+d PRIZEWINNER  
 CULTURAL CENTRE, LOS SILOS,  
 TENERIFE, SPAIN  
 ARCHITECT  
 GPY ARQUITECTOS

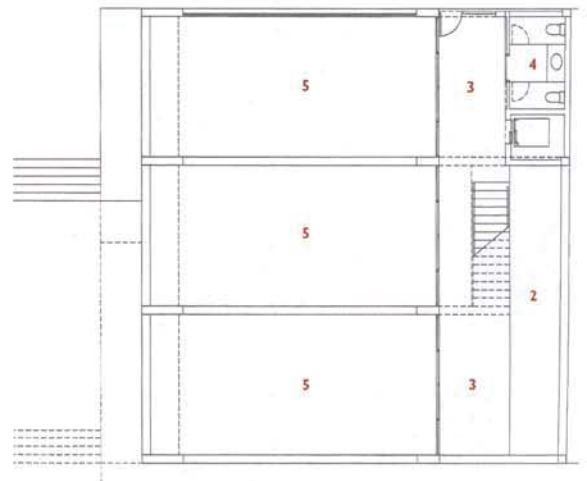


5



upper level plan (scale 1:330)

- 1 hall
- 2 patio
- 3 foyer
- 4 lavatory
- 5 workshop



lower level plan

Search results &gt; Journal profile

Favorite Export

JCR YEAR

2022

# ARCHITECTURAL REVIEW

ISSN

0003-861X

EISSN

N/A

JCR ABBREVIATION

ARCHIT REV

ISO ABBREVIATION

Archit. Rev.

## Journal information

EDITION

Arts & Humanities  
Citation Index (AHCI)

CATEGORY

ARCHITECTURE - AHCI

LANGUAGES

English

REGION

ENGLAND

1ST ELECTRONIC JCR YEAR

2020

## Publisher information

PUBLISHER

EMAP  
BUSINESS  
PUBLISHING  
LTD

ADDRESS

151 ROSEBERY  
AVE, LONDON  
EC1R 4QX,  
ENGLAND

PUBLICATION FREQUENCY

10 issues/year

## Journal's performance

### Journal Impact Factor

The Journal Impact Factor (JIF) is a journal-level metric calculated from data indexed in the Web of Science Core Collection. It should be used with careful attention to the many factors that influence citation rates, such as the volume of publication and citations characteristics of the subject area and type of journal. The Journal Impact Factor can complement expert opinion and informed peer review. In the case of academic evaluation for tenure, it is inappropriate to use a journal-level metric as a proxy measure for individual researchers, institutions, or articles. [Learn more](#)

2022 JOURNAL IMPACT  
FACTOR

0.3

[View calculation](#)JOURNAL IMPACT FACTOR WITHOUT SELF  
CITATIONS

0.3

[View calculation](#)

### Journal Impact Factor contributing items [Export](#)

Citable items (58)

Citing Sources (13)

TITLE

CITATION COUNT

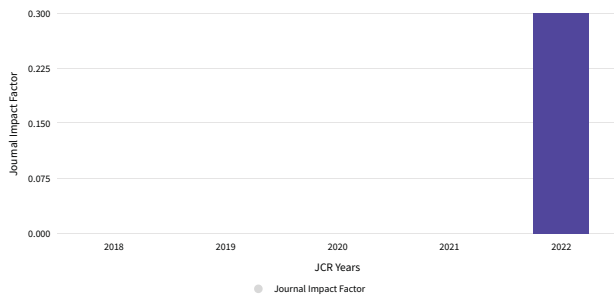
Play the system

1

▼

### Journal Impact Factor Trend 2022

[Export](#)



[View all years](#)

The coloniality of planting	1	▼
AFTER THE GRAVEL RUSH	0	▼
Appropriating Amsterdam	0	▼
Arigho Larmour Wheeler Architects	0	▼
Beatriz colomina	0	▼
Becoming urban	0	▼
Big Space, Little Space	0	▼
Breaking new ground	0	▼
Camera man	0	▼

[View All in Web of Science](#)

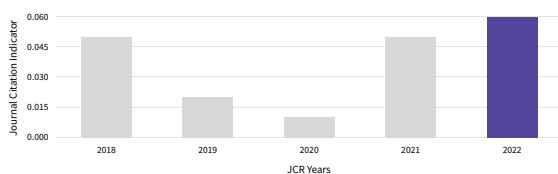
## Journal Citation Indicator (JCI)

Export

0.06

The Journal Citation Indicator (JCI) is the average Category Normalized Citation Impact (CNCI) of citable items (articles & reviews) published by a journal over a recent three year period. The average JCI in a category is 1. Journals with a JCI of 1.5 have 50% more citation impact than the average in that category. It may be used alongside other metrics to help you evaluate journals.

[Learn more](#)



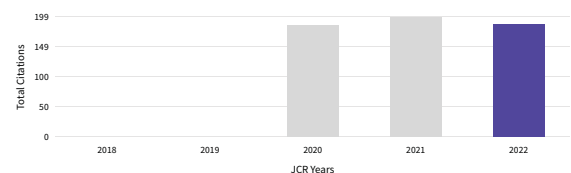
[View all years](#)

## Total Citations

Export

187

The total number of times that a journal has been cited by all journals included in the database in the JCR year. Citations to journals listed in JCR are compiled annually from the JCR years combined database, regardless of which JCR edition lists the journal.



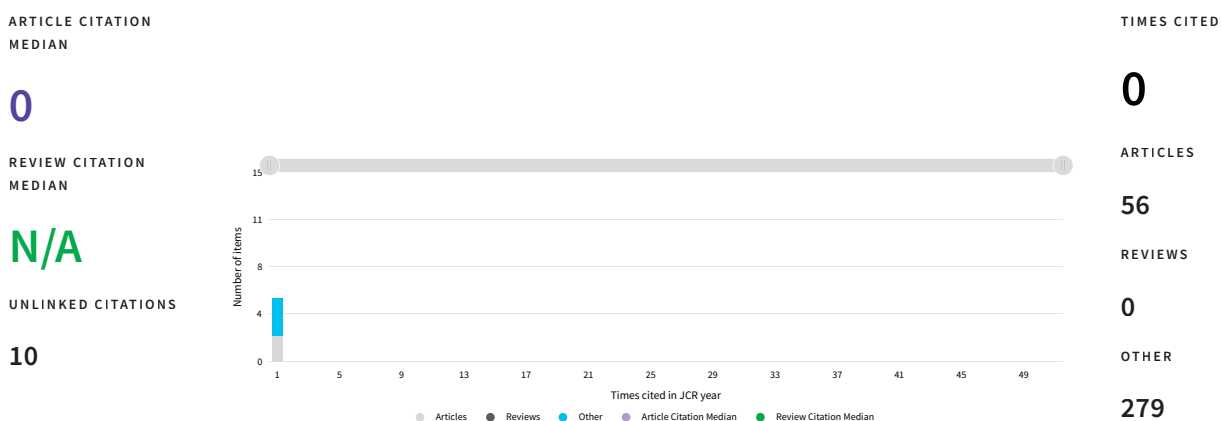
[View all years](#)



## Citation distribution

[Export](#)

The Citation Distribution shows the frequency with which items published in the year or two years prior were cited in the JCR data year (i.e., the component of the calculation of the JIF). The graph has similar functionality as the JIF Trend graph, including hover-over data descriptions for each data point, and an interactive legend where each data element's legend can be used as a toggle. You can view Articles, Reviews, or Non-Citable (other) items to the JIF numerator. [Learn more](#)



## Open Access (OA)

[Export](#)

The data included in this tile summarizes the items published in the journal in the JCR data year and in the previous two years. This three-year set of published items is used to provide descriptive analysis of the content and community of the journal.

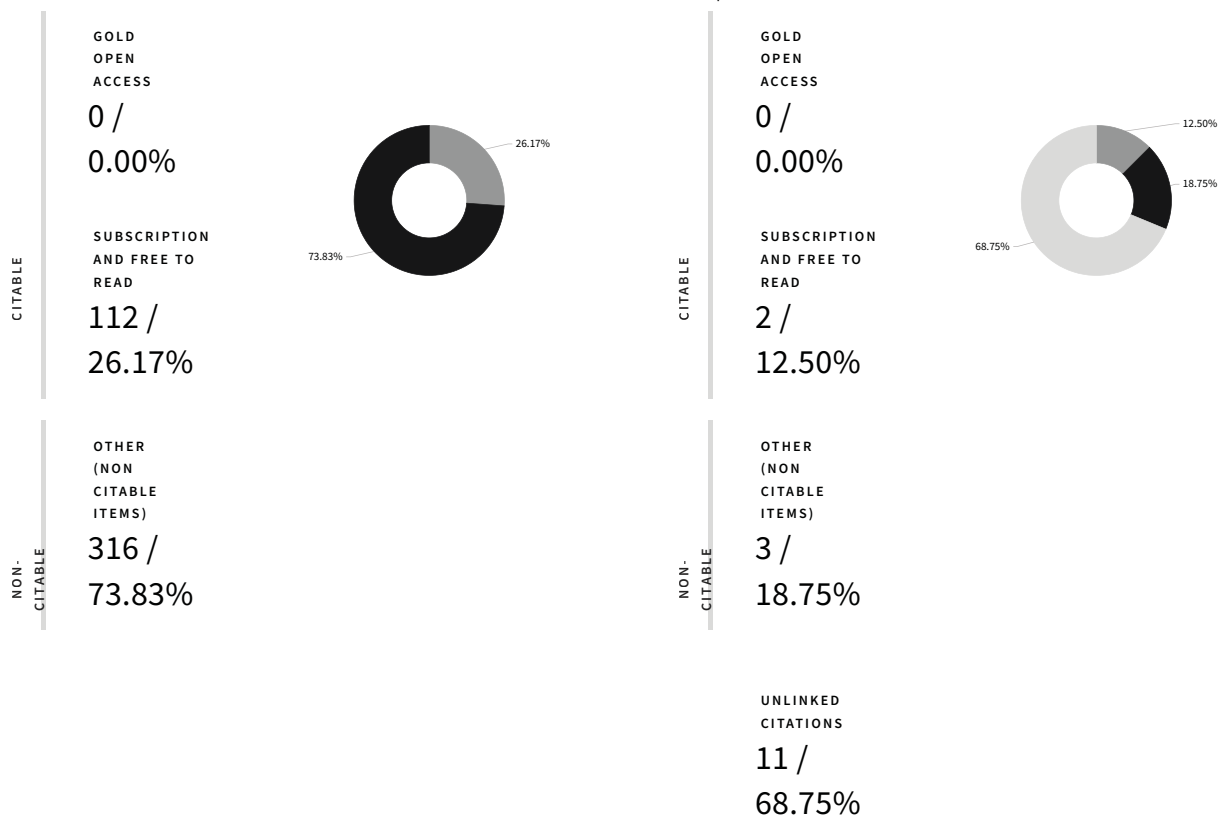
[Learn more](#)

### Items

TOTAL CITABLE	% OF CITABLE OA
112	0.00%

### Citations\*

TOTAL CITABLE	% OF CITABLE OA
2	0.00%



\*Citations in 2022 to items published in [2020 - 2022]

## Rank by Journal Impact Factor

**Note:** While journals indexed in AHCI and ESCI are receiving a JIF for the first time in June 2023, they will not receive ranks, quartiles, or percentiles until the release of 2023 data in June 2024. [Learn more](#)

## Rank by Journal Citation Indicator (JCI)

Journals within a category are sorted in descending order by Journal Citation Indicator (JCI) resulting in the Category Ranking below. A separate rank is shown for each category in which the journal is listed in JCR. Data for the most recent year is presented at the top of the list, with other years shown in reverse chronological order. [Learn more](#)

CATEGORY

ARCHITECTURE

77/95

JCR YEAR JCI RANK JCI QUARTILE JCI PERCENTILE

2022	77/95	Q4	19.47	
2021	82/93	Q4	12.37	
2020	87/91	Q4	4.95	
2019	84/90	Q4	7.22	
2018	76/88	Q4	14.20	
2017	71/87	Q4	18.97	

# Citation network

## Cited Half-life

**44.5 years**

The Cited Half-Life is the median age of the items in this journal that were cited in the JCR year. Half of a journal's cited items were published more recently than the cited half-life.

TOTAL NUMBER OF CITES

**187**

NON SELF-CITATIONS

**187**

SELF-CITATIONS

**N/A**

Cited Half-life Data

## Citing Half-life

**N/A**

The Citing Half-Life is the median age of items in other publications cited by this journal in the JCR year.

TOTAL NUMBER OF CITES

**6**

NON SELF-CITATIONS

**6**

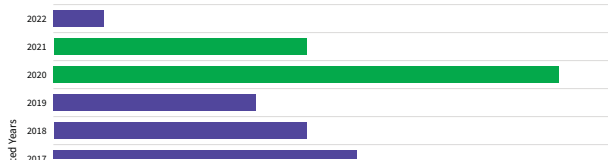
SELF-CITATIONS

**N/A**

Citing Half-life Data

[Export](#)

CITED YEAR	# OF CITES FROM 2022	CUMULATIVE %	# OF CITING SOURCES
<b>All years</b>	<b>187 citations</b>	<b>100.00%</b>	<b>91 sources</b> >
2022	1 citations	0.53%	1 sources >
2021	5 citations	3.21%	5 sources >
2020	10 citations	8.56%	8 sources >
2019	4 citations	10.70%	4 sources >
2018	5 citations	13.37%	5 sources >
2017	6 citations	16.58%	5 sources >

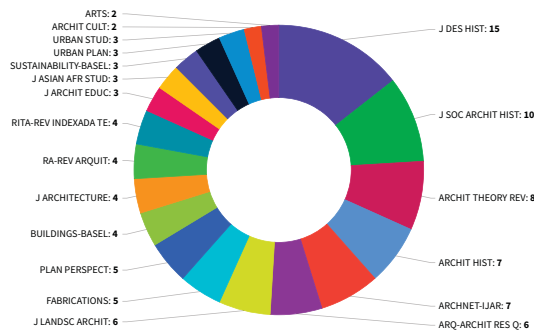


## Journal Citation Relationships

Cited Data

Citing Data

Top 20 journals citing ARCHIT REV by number of citations



## Content metrics

### Source data

This tile shows the breakdown of document types published by the journal. Citable Items are Articles and Reviews. For the purposes of calculating JIF, a JCR year

considers the publications of that journal in the two prior years. [Learn more](#)

## 54 total citable items

	ARTICLES	REVIEWS	COMBINED(C)	OTHER DOCUMENT TYPES(O)	PERCENTAGE
NUMBER IN JCR YEAR 2022 (A)	54	0	54	34	61%
NUMBER OF REFERENCES (B)	0	0	0	6	0%
RATIO (B/A)	0.0	N/A	0.0	0.2	

## Contributions by organizations

[Export](#)

Organizations that have contributed the most papers to the journal in the most recent three-year period. [Learn more](#)

RANK	ORGANIZATION	COUNT
1	5-2-4 MATSUBARA, SETAGAYA KU	1
-	75 RUE CHERCHE MIDI	1
-	ALMIRANTE 4,5 B	1
-	CHOQUEHUANCA 199	1
-	DEBORAH BERKE PARTNERS	1
-	DENNIS SHARP ARCHITECTS	1
-	FAU USP	1
-	GRAFTON ARCHITECTS	1

## Contributions by country/region

[Export](#)

Countries or Regions that have contributed the most papers to the journal in the most recent three-year period. [Learn more](#)

RANK	COUNTRY / REGION	COUNT
1	England	2
-	USA	2
3	Brazil	1
-	France	1
-	Ireland	1
-	Italy	1
-	Japan	1
-	Peru	1
-	Portugal	1

## Additional metrics

Eigenfactor Score



0.00015

Normalized Eigenfactor



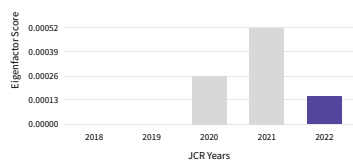
0.03238

Article influence score

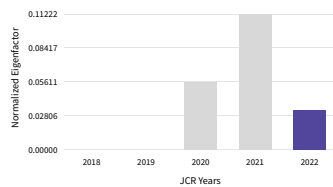


0.082

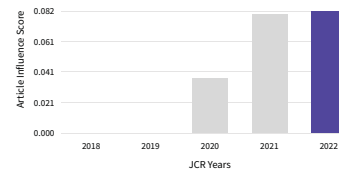
The Eigenfactor Score is a reflection of the density of the network of citations around the journal using 5 years of cited content as cited by the Current Year. It considers both the number of citations and the source of those citations, so that highly cited sources will influence the network more than less cited sources. The Eigenfactor calculation does not include journal self-citations. [Learn more](#)



The Normalized Eigenfactor Score is the Eigenfactor score normalized, by rescaling the total number of journals in the JCR each year, so that the average journal has a score of 1. Journals can then be compared and influence measured by their score relative to 1. [Learn more](#)



The Article Influence Score normalizes the Eigenfactor Score according to the cumulative size of the cited journal across the prior five years. The mean Article Influence Score for each article is 1.00. A score greater than 1.00 indicates that each article in the journal has above-average influence. [Learn more](#)

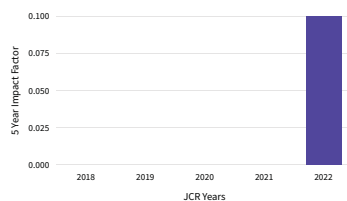


## 5 Year Impact Factor ↓

**0.1**

[View Calculation](#)

The 5-year Impact Factor is the average number of times articles from the journal published in the past five years have been cited in the JCR year. It is calculated by dividing the number of citations in the JCR year by the total number of articles published in the five previous years. [Learn more](#)

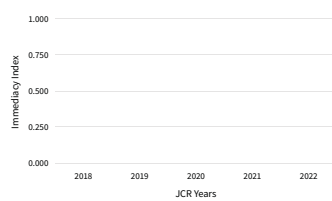


## Immediacy Index ↓

**<0.1**

[View Calculation](#)

The Immediacy Index is the count of citations in the current year to the journal that reference content in this same year. Journals that have a consistently high Immediacy Index attract citations rapidly. [Learn more](#)





Ads by Google


Stop seeing this ad


Why this ad? ▶

# Architectural Review

**COUNTRY**

United Kingdom

 Universities and research institutions in United Kingdom

 Media Ranking in United Kingdom

**SUBJECT AREA AND CATEGORY**

Arts and Humanities  
Visual Arts and Performing Arts

Engineering  
Architecture

**PUBLISHER**

Emap Construct Ltd.

**H-INDEX**

5

**PUBLICATION TYPE**


Journals

**ISSN**

0003861X

**COVERAGE**

1981, 2002-2014

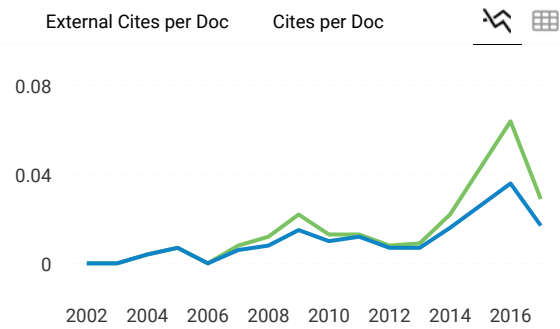
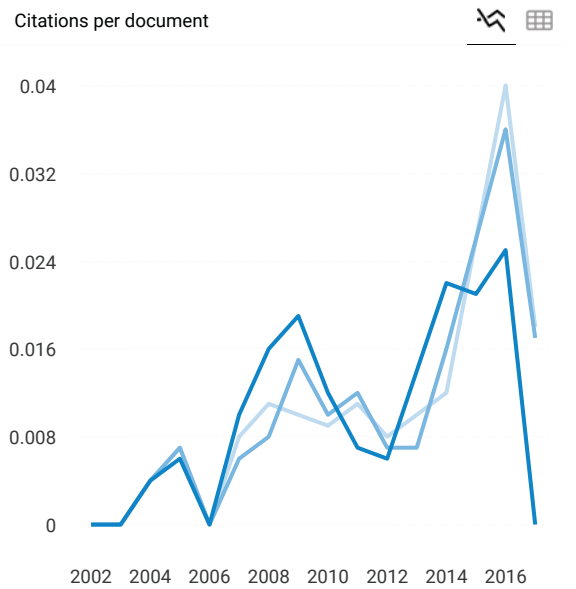
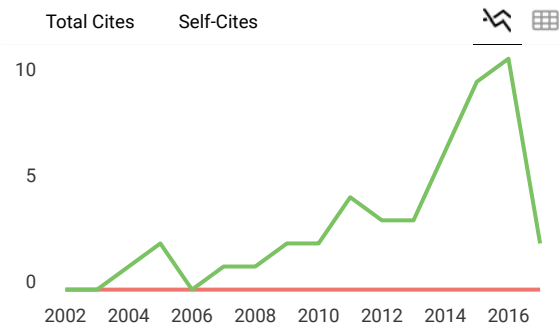
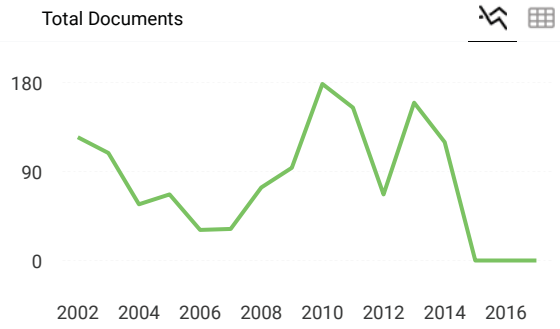
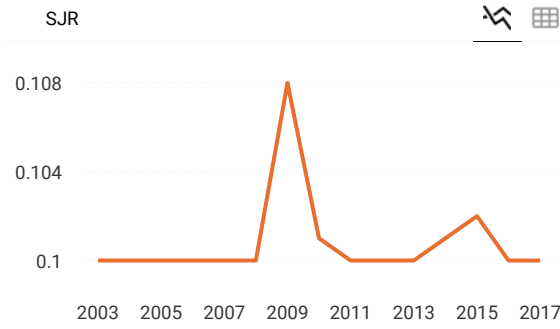
 Join the conversation about this journal



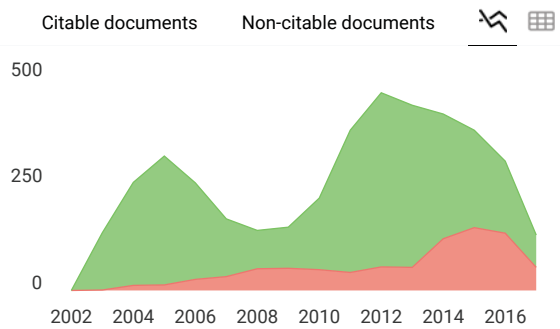
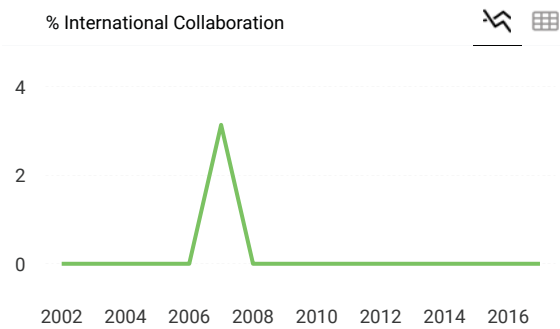
Ads by Google

Stop seeing this ad

Why this ad? ▶



- Cites / Doc. (4 years)
- Cites / Doc. (3 years)
- Cites / Doc. (2 years)






[HOME](#)
[ABOUT](#)
[METHODOLOGY](#)
[OUR TEAM](#)
[OTHER PROJECTS](#)
[FAQ](#)


## Architectural Review



### Impact indicators

Period	Totals			Without journal self citations		
	H5-Index	H5-Median	H Citations	H5-Index	H Citations	%
2010-2014	4	4	20	4	20	

### Subject Categories and Rankings

Subject Category	Ranking	Position	Quartile
Arts	Only core journals	134th (of 325)	Q2
	All journals	165th (of 361)	Q2

### Indexed in

Source	Category / Status
Avery Index to Architectural Periodicals	
Google Scholar Metrics	Architecture
SCImago Journal Rank	Architecture Visual Arts and Performing Arts
Ulrich's Periodicals Directory	Architecture Building and Construction
Web of Science Core Collection	Architecture





# JOURNAL SCHOLAR METRICS

ARTS, HUMANITIES, AND SOCIAL SCIENCES



- HOME
- ABOUT
- METHODOLOGY
- OUR TEAM
- OTHER PROJECTS
- FAQ

## ARTS

Displaying core and related journals 161-180 of 410.  Uncheck to display core journals only  Find a journal in this ranking

Rank	Country	Journal name	Totals			Without journal self-citations			
			Quartile	H5-Index	H5-Median	H Citations	H5-Index	H Citations	%
151		African Arts	Q2	4	5	21	4	17	
151		Architectural Research Quarterly	Q2	4	5	21	4	21	
151		Journal of British Cinema and Television	Q2	4	5	20	3	18	
151		Afterall: a Journal of Art, Context, and Enquiry	Q2	4	5	20	4	20	
165		Journal of the Society of Architectural Historians	Q2	4	4	33	4	33	
165		Trans. Revista Transcultural de Música	Q2	4	4	21	3	20	
165		Architectural Review	Q2	4	4	20	4	20	
165		Journal of Design History	Q2	4	4	18	4	16	
165		Journal of Musicological Research	Q2	4	4	17	4	17	
165		Musiktherapeutische Umschau	Q2	4	4	16	2	10	
165		Journal of Glass Studies	Q2	4	4	16	4	16	
165		International Journal of New Trends in Arts, Sports & Science Education (ijtase)	Q2	4	4	16	4	16	
173		Theater Heute	Q2	3	16	45	3	45	
174		Revista Memória Em Rede	Q2	3	9	35	3	33	
175		International Journal of Arts & Sciences	Q2	3	6	20	2	18	
175		Asri: Arte y Sociedad. Revista de Investigación	Q2	3	6	15	3	15	
177		Cahiers Du Cinema España	Q2	3	5	39	3	39	
177		Aurora. Revista de Arte, Media E Política	Q2	3	5	24	3	24	
177		Landscape Architecture Magazine	Q2	3	5	18	3	18	
177		Oxford Art Journal	Q2	3	5	17	3	17	

First | Previous | Next | Last

Journal Scholar Metrics is a product developed by EC3 Research Group: Evaluación de la Ciencia y la Comunicación Científica Universidad de Granada Campus de Cartuja s/n. Granada (Spain).



# Shedding light: cultural centre, Los Silos, Tenerife, Spain.

[Enlace de documentos de ProQuest](#)

## RESUMEN

Prize-winner in the fifth annual ar+d awards. Architects: GPY Arquitectos.

## DETALLES

<b>Materia/artista:</b>	Cultural centers -- Canary Islands -- Santa Cruz de Tenerife -- Los Silos -- Plaza San Bernardo., GPY Arquitectos., Gonzalez Perez, Juan Antonio., Yanes Tuna, Urbano.
<b>Características del documento:</b>	photos., sections, plans, site plans.
<b>Título:</b>	Shedding light: cultural centre, Los Silos, Tenerife, Spain.
<b>Título de publicación:</b>	Architectural review
<b>Tomo:</b>	214
<b>Número:</b>	1282
<b>Páginas:</b>	46-49
<b>Número de páginas:</b>	4
<b>Año de publicación:</b>	2003
<b>ISSN:</b>	0003-861X
<b>Tipo de fuente:</b>	Revista científica
<b>Idioma de la publicación:</b>	English
<b>Tipo de documento:</b>	Journal Article
<b>Número Avery:</b>	AVERY-489194
<b>Número de acceso:</b>	489194
<b>ID del documento de ProQuest:</b>	55682285

**URL del documento:** <https://www.proquest.com/scholarly-journals/shedding-light-cultural-centre-los-silos-tenerife/docview/55682285/se-2?accountid=14705>

**Última actualización:** 2016-10-26

**Base de datos:** Avery Index to Architectural Periodicals

## ENLACES

[Consulta la disponibilidad del texto completo](#)

## Bibliografía

Citation style: APA 6th - American Psychological Association, 6th Edition

Shedding light: Cultural centre, los silos, tenerife, spain. (2003). Architectural Review, 214(1282), 46-49. Retrieved from <https://www.proquest.com/scholarly-journals/shedding-light-cultural-centre-los-silos-tenerife/docview/55682285/se-2?accountid=14705>

---

Copyright de la base de datos © 2023 ProQuest LLC. Reservados todos los derechos.

[Términos y condiciones](#) [Contactar con ProQuest](#)

## ARCHITECTURAL REVIEW

ISSN 0003-861X

Difusión

Título: ARCHITECTURAL REVIEW  
 País: United Kingdom  
 URL: <http://www.arplus.com/home.htm>  
 Ámbito: ARQUITECTURA Y URBANISMO; ARTES  
 Campo académico: ARQUITECTURA; ARTES ESCÉNICAS  
 Indizada en: Arts and Humanities Citation Index, Academic Search Premier, Periodicals Index Online, Aerospace Database, Art Abstracts, Art Source, Civil Engineering Abstracts, Design & Applied Arts Index, Index Islamicus, L'Année philologique, Metadex, Public Affairs Index, Art Index, Avery, Communication Abstracts, EBSCO Education Source, ICONDA Bibliographic  
 Evaluada en: CARHUS Plus+ 2018  
 Políticas OA: SHERPA/ROMEO color white

Difusión:

### Presente en

1 Bases de datos de citas. <i>Arts and Humanities Citation Index</i>	c1
2 Bases de datos multidisciplinares. <i>Academic Search Premier, Periodicals Index Online</i>	m2
14 Bases de datos especializadas. <i>Aerospace Database, Art Abstracts, Art Source, Civil Engineering Abstracts, Design &amp; Applied Arts Index, Index Islamicus, L'Année philologique, Metadex, Public Affairs Index, Art Index, Avery, Communication Abstracts, EBSCO Education Source, ICONDA Bibliographic</i>	e14
1 Recursos de evaluación. <i>CARHUS Plus+ 2018</i>	x1

### Difusión

**c1+m2+e14+x1**

A partir del año 2022 MIAR no muestra el cálculo del ICDS y en su lugar aparece únicamente el perfil de presencia de las revistas en las fuentes que analiza MIAR: bajo la etiqueta 'Difusión' se indica el número de presencias según las cuatro categorías de fuentes utilizadas. Con este cambio queremos profundizar en la función de agregar información útil para quienes necesitan evaluar, pero sin ser una fuente para la clasificación de revistas en función de un indicador. Los valores del ICDS de años anteriores estarán disponibles en las versiones archivadas de MIAR.

MIAR recolecta datos para la identificación y análisis de revistas científicas. Si se introduce en la casilla de búsqueda cualquier ISSN el sistema localizará en qué bases de datos de las contempladas en la matriz está indizada la revista, esté recogida o no en MIAR.

Buscar título



ShareThis

Difusión desde 2022

2022: c1+m2+e14+x1

ICDS hasta 2021

ICDS 2021: 10,0  
 ICDS 2020: 10,0  
 ICDS 2019: 10,0  
 ICDS 2018: 10,0  
 ICDS 2017: 10,0  
 ICDS 2016: 11,0  
 ICDS 2015: 9,977  
 ICDS 2014: 9,977  
 ICDS 2013: 9,977  
 ICDS 2012: 9,977  
 ICDS 2011: 9,977  
 ICDS 2010: 9,977  
 ICDS 2009: 9,977  
 ICDS 2008: 6,477

Artículos por año

total: 0 (lens)

Fuentes:

Enabled by The Lens

Artículos por año

2020: 6 docs.  
 2019: 4 docs.  
 2018: 7 docs.  
 2017: 3 docs.  
 2016: 1 docs.  
 2015: 1 docs.  
 2014: 0 docs.  
 2013: 1 docs.  
 2012: 3 docs.

Fuentes:

OpenAlex

updated: 01-07-2023  
 25 days ago.  
 Next update in 5 days.




Introduzca revista o ISSN...



# Revista: ARCHITECTURAL REVIEW

Para una visión más detallada de las revistas, por favor, [identifíquese en la plataforma.](#)

Título	ARCHITECTURAL REVIEW
ISSN-L	0003-861X
ISSN	
Clasificación Ciencias Sociales	No Aplica
Clasificación en Ciencias Humanas	A 

Centro de Transferencia Tecnológica

Gran Vía 48, planta 5ª. 18010, Granada (España)

(+34) 958 460 367 | investigacion@ec3metrics.com | ec3metrics.com

CLASIFICACIÓN CIRC 2022 APP CIRC

**EC3metrics**  
evaluación científica



---

C.I.R.C.  
EC3metrics



ISSN	TÍTOL	VALORACIÓ	ÀMBIT
1120-6861	ARCHEOLOGIA E CALCOLATORI	D	HISTÒRIA
0390-0592	ARCHEOLOGIA MEDIEVALE. CULTURA MATERIALE, INSEDIAMENTI, TERRITORIO	B	HISTÒRIA
0003-8180	ARCHEOLOGIA POLSKI	C	HISTÒRIA
0323-1267	ARCHEOLOGICKÉ ROZHLEDY (ARCHEOLOGICKÝ ÚSTAV AV ČR)	A	HISTÒRIA
0758-7708	ARCHÉOLOGIE DU MIDI MÉDIÉVAL	D	HISTÒRIA
0153-9337	ARCHÉOLOGIE MÉDIÉVALE	C	HISTÒRIA
0255-9005	ARCHÉOLOGIE SUISSE	D	HISTÒRIA
1255-5932	ARCHÉOLOGUE, ARCHÉOLOGIE NOUVELLE, L'	D	HISTÒRIA
1960-1360	ARCHEOSCIENCES: BULLETIN DE LIAISON DU GROUPE DES METHODES PLURIDISCIPLINAIRES CONTRIBUANT A L'ARCHEOLOGIE	C	HISTÒRIA
0044-8613	ARCHIPEL	C	GENERAL O MULTIDISCIPLINAR
1935-7001	ARCHITECT	B	ARTS
0003-8466	ARCHITECTS' JOURNAL	D	ARTS
0044-863X	ARCHITECTURA. ZEITSCHRIFT FÜR GESCHICHTE DER BAUKUNST	B	ARTS
0003-8504	ARCHITECTURAL DESIGN	A	ARTS
0003-8520	ARCHITECTURAL DIGEST	B	ARTS
0066-622X	ARCHITECTURAL HISTORY	A	ARTS
0003-858X	ARCHITECTURAL RECORD	B	ARTS
1359-1355	ARCHITECTURAL RESEARCH QUARTERLY	A	ARTS
0003-861X	ARCHITECTURAL REVIEW	B	ARTS
0003-8628	ARCHITECTURAL SCIENCE REVIEW	B	GEOGRAFIA I URBANISME
1326-4826	ARCHITECTURAL THEORY REVIEW	A	ARTS
0003-8695	ARCHITECTURE D'AUJOURD HUI, L'	B	ARTS
0003-8911	ARCHIV DES ÖFFENTLICHEN RECHTS	B	DRET
0003-8946	ARCHIV FÜR BEGRIFFSGESCHICHTE	D	FILOSOFIA
0003-8970	ARCHIV FÜR DAS STUDIUM DER NEUEREN SPRACHEN UND LITERATUREN	C	FILOLOGIA LINGÜÍSTICA I SOCIOLINGÜÍSTICA
0003-9101	ARCHIV FÜR GESCHICHTE DER PHILOSOPHIE	B	FILOSOFIA
0003-9160	ARCHIV FÜR KATHOLISCHES KIRCHENRECHT. MIT BESONDERER BERÜCKSICHTIGUNG DER LÄNDER DEUTSCHER SPRACHE	D	DRET
0066-6386	ARCHIV FÜR LITURGIIEWISSENSCHAFT	C	ESTUDIS RELIGIOSOS
0003-9292	ARCHIV FÜR MUSIKWISSENSCHAFT	B	ARTS
0066-6459	ARCHIV FÜR PAPYRUSFORSCHUNG UND VERWANDTE GEBIETE	B	HISTÒRIA
0003-9381	ARCHIV FÜR REFORMATIONSGESCHICHTE-ARCHIVE FOR REFORMATION HISTORY	B	ESTUDIS RELIGIOSOS
0084-6724	ARCHIV FÜR RELIGIONSPSYCHOLOGIE	A	ESTUDIS RELIGIOSOS
0066-6505	ARCHIV FÜR SOZIALGESCHICHTE	B	HISTÒRIA
0066-6513	ARCHIV FÜR VÖLKERKUNDE	C	ANTROPOLOGIA

Introduzca un título, ISSN o término de búsqueda para buscar revistas u otras publicaciones periódicas: ?

Búsqueda avanzada ▶

Regresar a los resultados de búsqueda [Cobertura de la lista](#) [Correo electrónico](#) [Descargar](#) [Imprimir](#) [Correcciones](#) [Expandir todo](#) [Reducir todo](#)

## The Architectural Review

ingentaconnect™

Buscar texto completo en Faro (ULPGC)

Catálogo de la Biblioteca: [Búsqueda por ISSN](#) | [Búsqueda de títulos](#)

Información de título Índice

Títulos relacionados

▶ Edición en otros medios (2)

Listas

Títulos marcados (0)

Historial de Búsqueda

0958-6407 - (1)

1132-6409 - (1)

0214-1124 - (1)

0003-86953

1720-6553 - (1)

2385-2054 - (1)

0003-8695 - (1)

2092-5190 - (1)

2499-6602 - (0)

0210-2080 - (1)

arquitectura plus - (1622)

0003-861x - (1)

albenaa - (0)

1578-5769 - (1)

1319-206x - (0)

Título:	The Architectural Review	ISSN:	0003-861X
Editorial:	Emap Construct Ltd.	País:	Reino Unido
Estado:	Activa	Año de inicio:	1896
Frecuencia:	10 veces al año	Idioma del texto:	Texto en: Inglés
Resumido / Indexado:	Sí	Tipo de serie:	Revista
Tipo de contenido:	Especializado	Formato:	Impreso
Página de web:	https://www-architectural-review-com.bibproxy.ulpgc.es/	Descripción:	Presents a thoughtful, critical and at times provocative vision of contemporary global architecture.

▶ Clasificaciones de materias

▶ Información adicional sobre títulos

Incorporates (in 1909): Details (Reino Unido)

**Editor comercial:**

Emap Construct Ltd.

Dirección: 69-77 Paul St, London, EC2A 4NW Reino Unido

Teléfono: 44-20-39532000

Página de web: <http://www.emap.com>

Correo electrónico del editor: [customerserviceteam@emap.com](mailto:customerserviceteam@emap.com)

**Editor comercial:** Fuente

EMAP Publishing Ltd.

GBP 180.00 suscripción combinada por año (print & online eds.) (en vigor 2021)

GBP 17.50 quiosco/cubierta por número (en vigor 2021)

Gratis a personal cualificado (en vigor 2021)

## Fuentes a texto completo

- BACON (Base de Connaissance Nationale)
  - Bacon Proquest Couperin Periodicals-Index-Online
- Center for Research Libraries
  - CRL Open Access, 01/01/1900-12/31/1900
  - CRL Serials, 01/01/1900-12/31/1900
- Dow Jones Factiva
  - Factiva - Couperin, 1997-
- EBSCOhost
  - Academic Search Alumni Edition, 01/01/2006-
  - Academic Search Complete, 01/01/2006-
  - Academic Search Elite, 01/01/2006-
  - Academic Search Premier, 01/01/2006-
  - Academic Search Ultimate, 01/01/2006-
  - Art & Architecture Complete, 01/01/2006-
  - Art & Architecture Source, 01/01/2006-
  - Art Full Text (H.W. Wilson), 01/01/1996-
  - Associates Programs Source, 01/01/2006-

- Associates Programs Source Plus, 01/01/2006-
- EBSCO Polytechnic Studies Collection: India, 01/01/2006-
- EBSCOhost EJS
- MegaFILE, 01/01/2006-
- OmniFile Full Text Mega (H.W. Wilson), 12/01/1995-
- OmniFile Full Text Select (H.W. Wilson), 12/01/1995-
- STM Source, 01/01/2006-
- STM Source, 01/01/2006-
- Vocational Studies Complete, 01/01/2006-
- Vocational Studies Premier, 01/01/2006-
- Gale
  - Gale Academic OneFile, 06/01/1994-05/31/2011
  - Gale Academic OneFile Select, 06/01/1994-05/31/2011
  - Gale General OneFile, 06/01/1994-05/31/2011
  - Gale In Context: Biography, 06/01/1994-05/31/2011
  - Gale In Context: Canada, 06/01/1994-05/31/2011
  - Gale In Context: College, 06/01/1994-05/31/2011
  - Gale In Context: High School, 06/01/1994-05/31/2011
  - Gale OneFile: Gardening and Horticulture, 06/01/1994-05/31/2011
  - Gale OneFile: High School Edition, 06/01/1994-05/31/2011
  - Gale OneFile: Home Improvement, 06/01/1994-05/31/2011
  - Gale OneFile: Popular Magazines, 06/01/1994-05/31/2011
  - Gale OneFile: Science, 06/01/1994-05/31/2011
  - InfoTrac Custom, 06/01/1994-05/31/2011
- LexisNexis
  - NexisDirect
- Multiple Vendors
  - Single Journals
- ProQuest
  - AAA: Architecture & Design, 11/01/1896-12/31/2005
  - Art and Architecture Archive Collection 1, 11/01/1896-12/31/2005
  - Career & Technical Education Database, 12/01/1995-01/31/2015

- eLibrary, 12/01/1995-01/31/2015
- ProQuest Central, 12/01/1995-01/31/2015
- ProQuest Central (Alumni Edition), 12/01/1995-01/31/2015
- ProQuest Central Essentials, 12/01/1995-01/31/2015
- ProQuest Central Korea, 12/01/1995-01/31/2015
- ProQuest Central Student, 12/01/1995-01/31/2015
- ProQuest Central UK/Ireland, 12/01/1995-01/31/2015
- ProQuest One Community College, 12/01/1995-01/31/2015
- Proquest.Jisc Collections:Art and Architecture Archive:2017-2020, 01/01/1896-12/01/2005
- Research Library, 12/01/1995-01/31/2015
- Research Library (Alumni Edition), 12/01/1995-01/31/2015
- Research Library Prep, 12/01/1995-01/31/2015
- 中国教育图书进出口有限公司 (CEPIEC - China Educational Publications Import & Export Corporation Ltd.)
- Socolar, 1994-2008

Bases de datos para realizar resúmenes e  
índices

- Architectural Index
  - Architectural Index (Online), 1995-
- Association for Asian Studies
  - Bibliography of Asian Studies (Online), 1970
- Clarivate Analytics
  - Arts & Humanities Citation Index
  - Current Contents
  - Web of Science
- EBSCOhost
  - Academic Search Alumni Edition, 1/1/1984-
  - Academic Search Complete, 1/1/1984-
  - Academic Search Elite, 1/1/1984-
  - Academic Search Premier, 1/1/1984-
  - Art & Architecture Complete, 1/1/1984-

- Art & Architecture Index, 1/1/1984-
- Art & Architecture Source, 7/1/1929-
- Art Abstracts (H.W. Wilson), 5/1/1984-
- Art Index (H.W. Wilson), 5/1/1984-
- Art Index Retrospective: 1929-1984 (H.W. Wilson), 7/1/1929-8/1/1984
- Associates Program Source Plus, 9/1/1996-
- Associates Programs Source, 9/1/1996-
- Avery Index to Architectural Periodicals, 1896-
- Biography Index: Past and Present (H.W. Wilson), vol.173, 1983-vol.229, no.1369, 2011
- Biotechnology Source, 01/01/1984-
- Current Abstracts, 1/1/2000-
- Education Index Retrospective: 1929-1983, 2/2/1931-3/2/1932
- Education Source, 2/2/1931-3/2/1932
- Garden, Landscape & Horticulture Index, 1/1/1984-
- Humanities International Complete, 9/1/1996-
- Humanities International Index, 9/1/1996-
- Humanities Source, 9/1/1996-
- Humanities Source Ultimate, 9/1/1996-
- Library & Information Science Source, 11/1/1934-6/1/1979
- Library Literature & Information Science Retrospective: 1905-1983 (H.W. Wilson), 11/1/1934-6/1/1979
- Military Transition Support Center, 1/1/1984-
- OmniFile Full Text Mega (H.W. Wilson), 5/1/1984-
- OmniFile Full Text Select (H.W. Wilson), 5/1/1984-
- Poetry & Short Story Reference Center, 1/1/1984-
- Public Affairs Index, 12/1/1986-
- RILM Abstracts of Music Literature (Repertoire International de Litterature Musicale)
- Russian Academy of Sciences Bibliographies
- Science and Technology Collection, 9/1/1996-
- STM Source, 1/1/1984-
- STM Source, 1/1/1984-
- TOC Premier (Table of Contents), 9/1/1996-
- Vocational Studies Complete, 9/1/1996-

- Elsevier BV
  - Scopus, 2002-2014, 1981
- Gale
  - Academic ASAP, 01/1991-
  - Gale Academic OneFile, 01/1991-
  - Gale Academic OneFile Select, 01/1992-
  - Gale General OneFile, 01/1991-
  - Gale In Context: Biography, 01/1991 -
  - Gale in Context: College
  - Gale in Context: Environmental Studies, 6/1994-, dropped
  - Gale Literature: Book Review Index
  - Gale OneFile: Gardening and Horticulture, 01/1991-
  - Gale OneFile: High School Edition, 01/1991-
  - Gale OneFile: Popular Magazines, 01/1991-
  - Gale OneFile: Science, 01/1991-
  - General Reference Center Gold, 01/1991-
  - General Reference Centre International, 1/1991-
  - InfoTrac Custom, 1/1991-
  - Student Resources in Context, 01/1991-
- Gale In Context: Canada, 01/1991-
- Gale in Context: High School
- International Atomic Energy Agency
  - INIS Repository (International Nuclear Information System)
- OCLC
  - ArticleFirst, vol.CXCII, no.1151, 1993-vol.104, 2010
  - Periodical Abstracts, v.190, n.1139, 1992-v.229, n.1371, 2011
- Personal Alert (E-mail)
- ProQuest
  - Abstracts in New Technologies and Engineering (Online), Selective
  - Aerospace Database, Selective
  - Aluminium Industry Abstracts (Online), Selective
  - Art & Architecture Archive

- Art, Design & Architecture Collection, 01/01/1992-, dropped
- Arts & Humanities Database, 01/01/1992-, dropped
- Arts Premium Collection, 1/1/1992-, dropped
- Avery Index to Architectural Periodicals, 1896-
- Career & Technical Education Database, 01/01/1992-
- Ceramic Abstracts (Online), Selective
- Civil Engineering Abstracts, Selective
- Computer and Information Systems Abstracts (Online), Selective
- Copper Technical Reference Library, Selective
- Corrosion Abstracts (Online), Selective
- Design & Applied Arts Index (Online), Selective
- Earthquake Engineering Abstracts, Selective
- Electronics and Communications Abstracts (Online), Selective
- Engineered Materials Abstracts, Selective
- Engineering Collection, 01/01/1992-, dropped
- Engineering Research Database, Selective
- Humanities Index (Online, Ann Arbor), Selective
- Materials Business File, Selective
- Materials Research Database, Selective
- Materials Science & Engineering Collection, 1/1/1992-
- Mechanical & Transportation Engineering Abstracts, Selective
- METADEX, Selective
- Periodicals Index Online
- Professional ProQuest Central, 01/01/1992-
- ProQuest 5000, 01/01/1992-
- ProQuest 5000 International, 01/01/1992-
- ProQuest Central, 01/01/1992-
- ProQuest SciTech Collection, 1/1/1992-
- Research Library, 01/01/1992-
- RILM Abstracts of Music Literature (Repertoire International de Litterature Musicale)
- SciTech Premium Collection, 01/01/1992-, dropped
- Technology Collection, 01/01/1992-



- **Technology Research Database, Selective**
- **R I B A**
  - **Architectural Publications Index (Online)**
- **The Getty Conservation Institute**
  - **AATA Online (Art and Archaeology Technical Abstracts), coverage dropped**
- **World Ceramics Abstracts (Online), Selective**

#### Fuentes para realizar resúmenes e índices

Aluminium Industry Abstracts (Cesado) (Impreso)

Cadscan (Cesado) (Impreso)

Electronics and Communications Abstracts Journal (Cesado) (Impreso)

Isurv Knowledge Alert (Cesado) (Impreso)

Leadscan (Cesado) (Impreso)

Search (Devon) (Cesado) (Impreso)

Solid State and Superconductivity Abstracts (Cesado) (Impreso)

Zincscan (Investigado / No resuelto) (Impreso)

#### Servicios de envío de documentos

British Library Document Supply Service

Information Express

IngentaConnect

Linda Hall Library of Science, Engineering & Technology \* Document Delivery Services

RightFind

---

▶ **Demografía**

---

▶ **Reseñas**

---