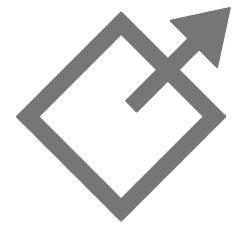
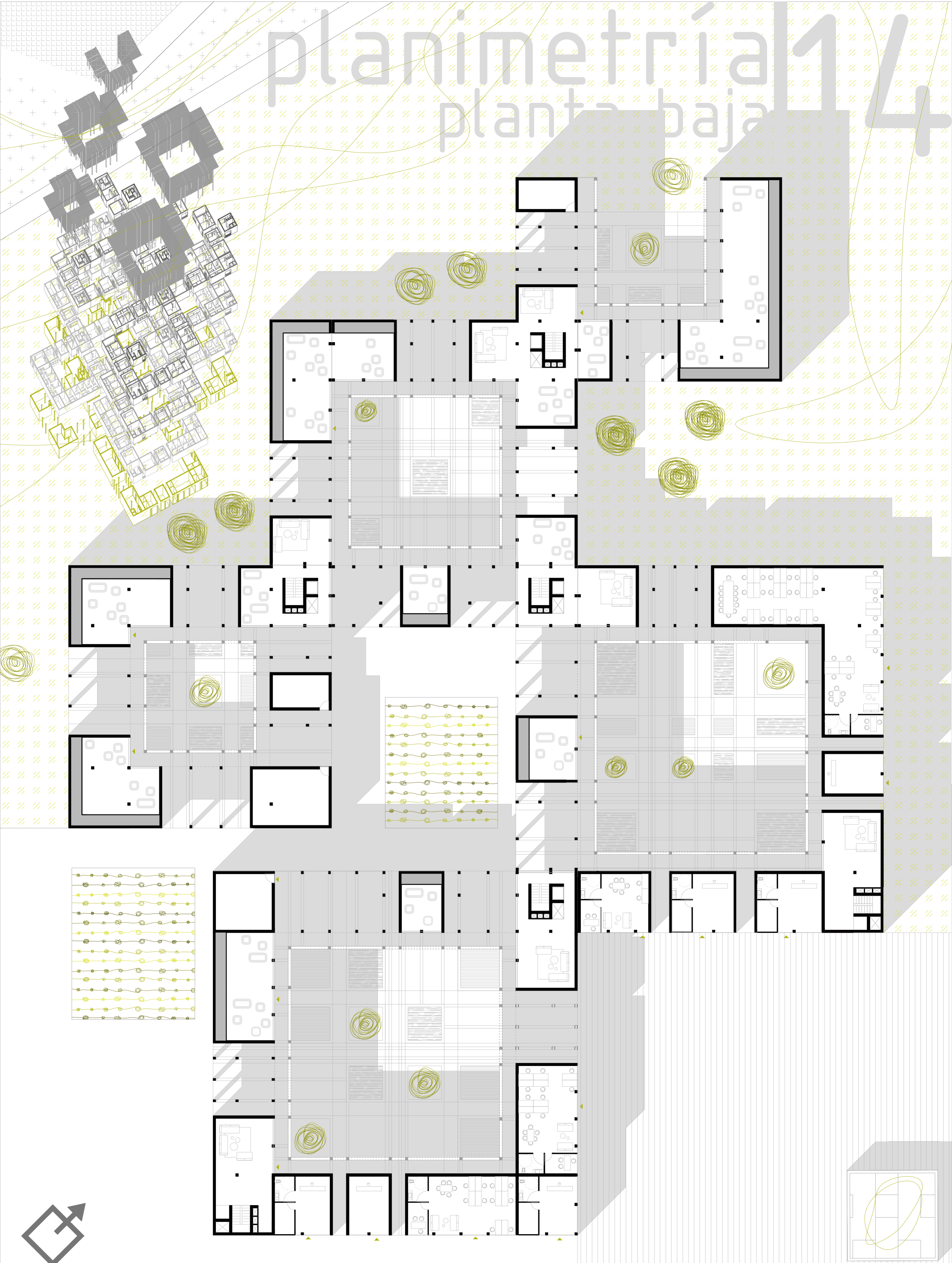


planimetría 1/4

plantas bajal



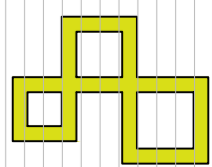
e: 1/250

ulpgc | **ea** | dact
lpgc | pfc

M o r | e | c o n o v
[e]coBARRIO en "Le Palmeraie"
Agadir - Marru[e]cos 2014

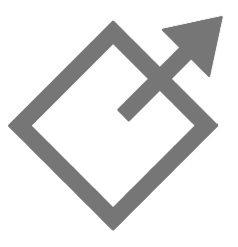
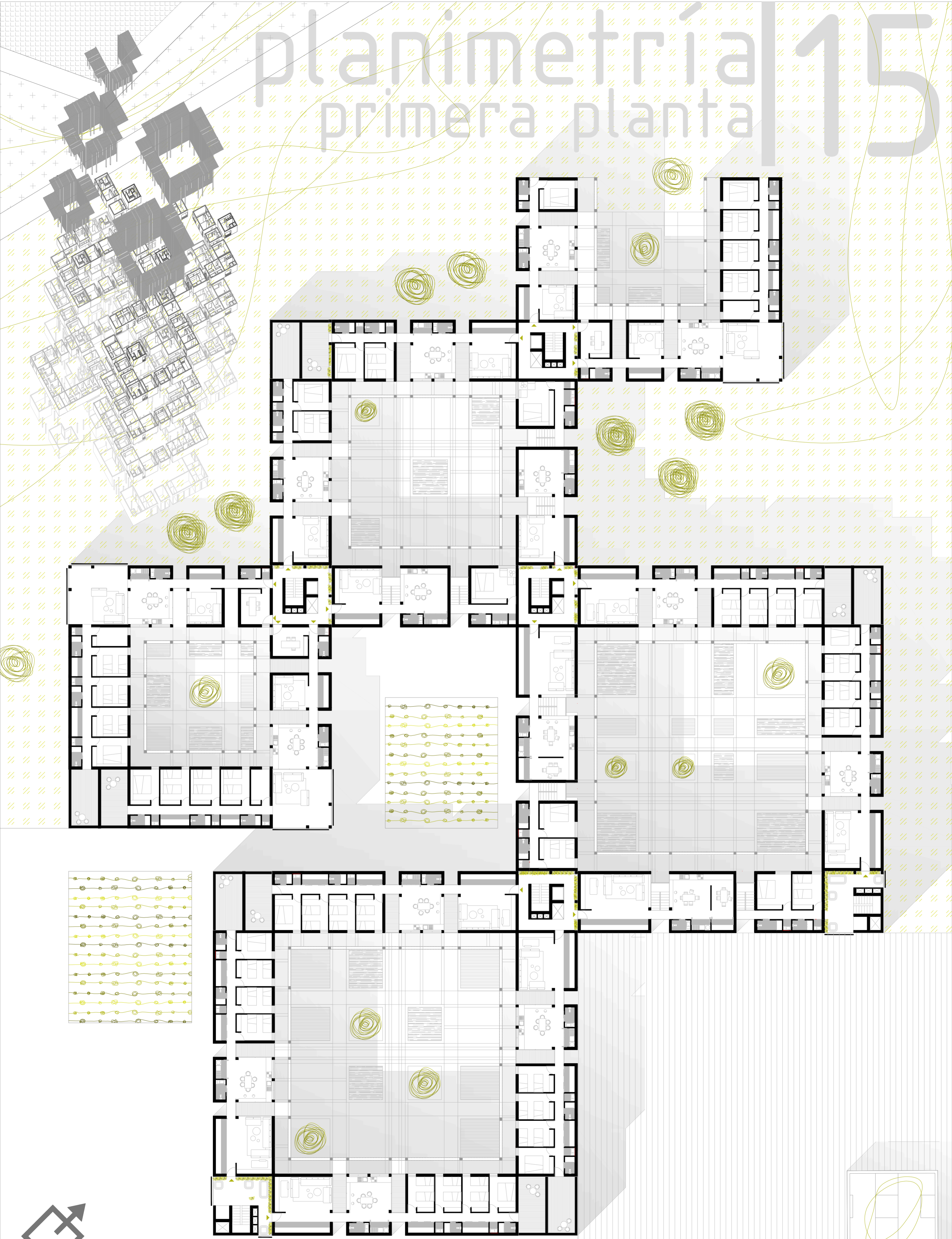
tutor: vicente mirallave izquierdo
construcción: josé miguel rodríguez guerra
estructuras: juan rafael perez cabrera
instalaciones: francisco javier solís robaina

e f r é n
gonzález
rodríguez



planimetría 15

primera planta

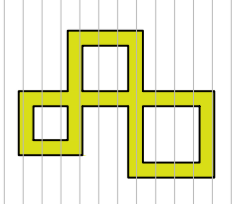


e: 1/250

ulpgc | **ea**dact | M o r [e] c o n o v
lpgc | **pfc** | [e]coBARRIO en "Le Palmeraie" | n o v
Agadir - Marruecos | 2014

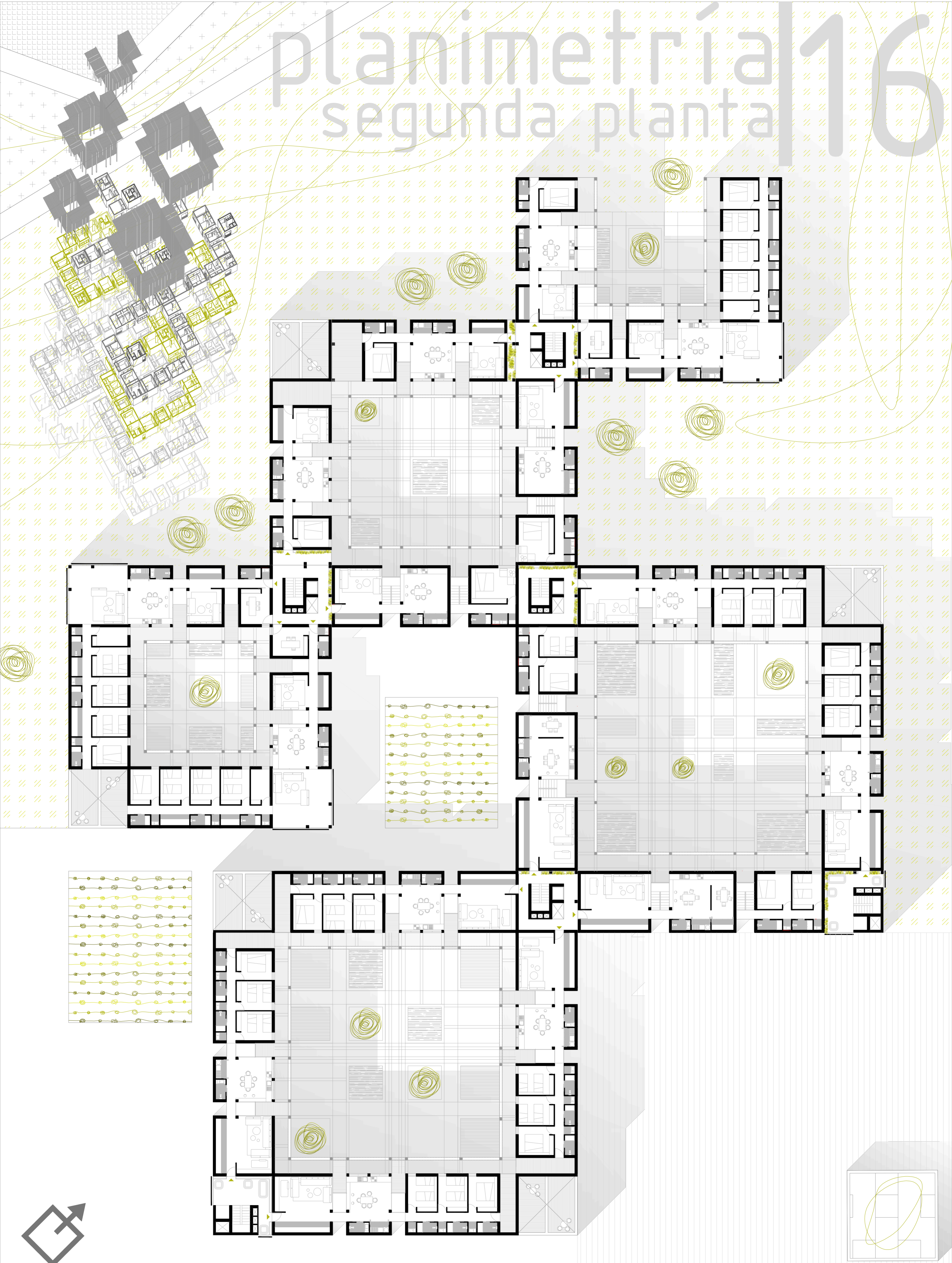
tutor: vicente mirallave izquierdo
construcción: josé miguel rodríguez guerra
estructuras: juan rafael perez cabrera
instalaciones: francisco javier solís robaina

e f r é n
gonzález
rodríguez



planimetría 16

segunda planta



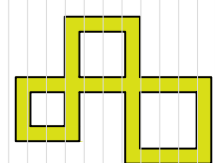
e: 1/250

ulpgc | **ea** | dact | lpgc | pfc

M o r | e | c o | n o v
[e]coBARRIO en "Le Palmeraie"
Agadir - Marruecos | 2014

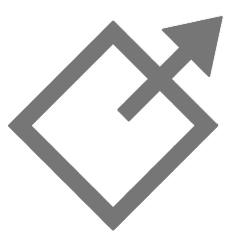
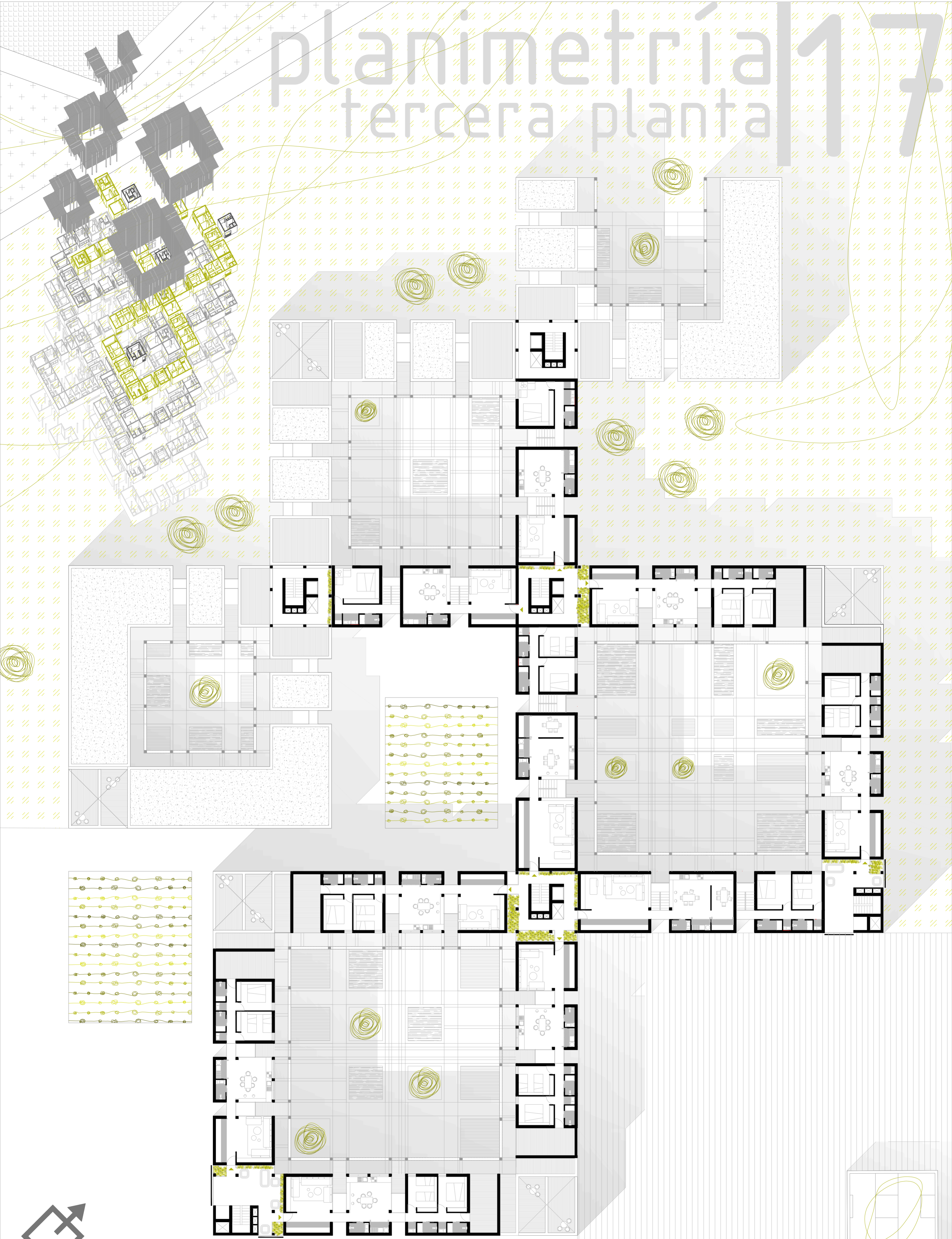
tutor: vicente mirallave izquierdo
construcción: josé miguel rodríguez guerra
estructuras: juan rafael perez cabrera
instalaciones: francisco javier solís robaina

e f r é n
gonzález
rodríguez



planimetría 17

tercera planta

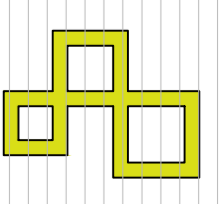


e: 1/250

ulpgc | **ea** | dact | M o r | e | c o | n o v
lpgc | pfc | [e]coBARRIO en "Le Palmeraie" | 2014

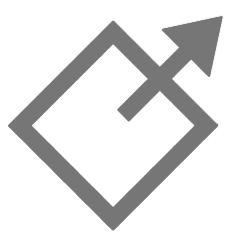
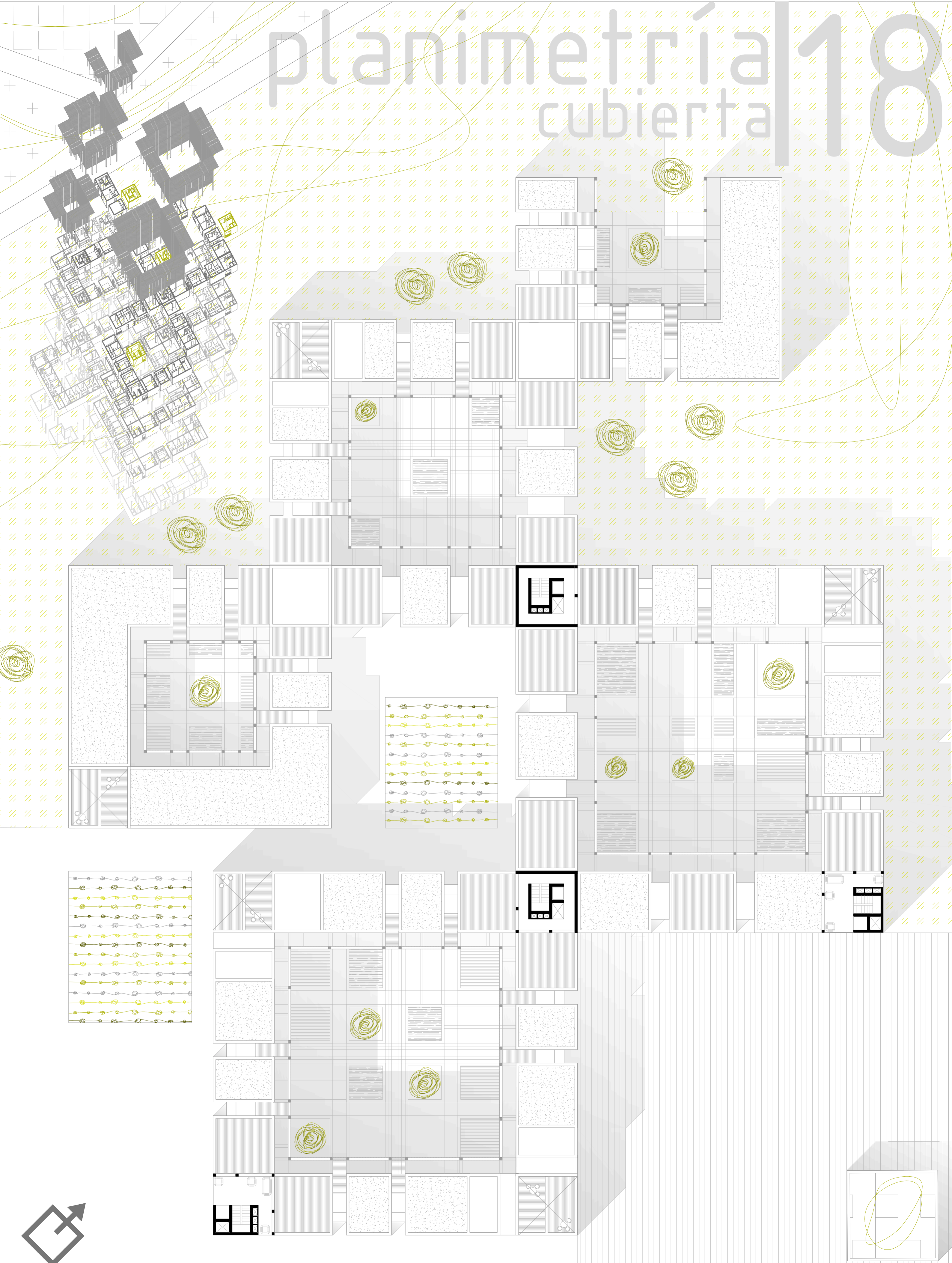
tutor: vicente mirallave izquierdo
construcción: josé miguel rodríguez guerra
estructuras: juan rafael perez cabrera
instalaciones: francisco javier solís robaina

e f r é n
gonzález
rodríguez



planimetría 18

cubierta

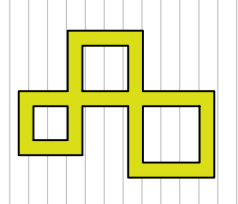


e: 1/250

ulpgc | **ea** | dact | M o r | e | c o | n o v |
lpgc | pfc | [e]coBARRIO en "Le Palmeraie" | 2014

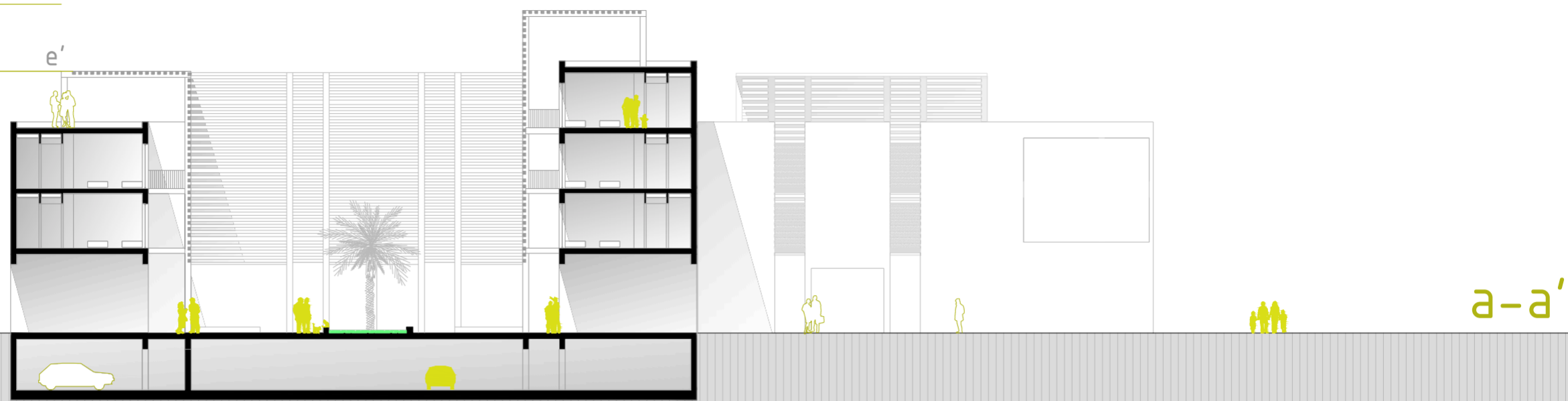
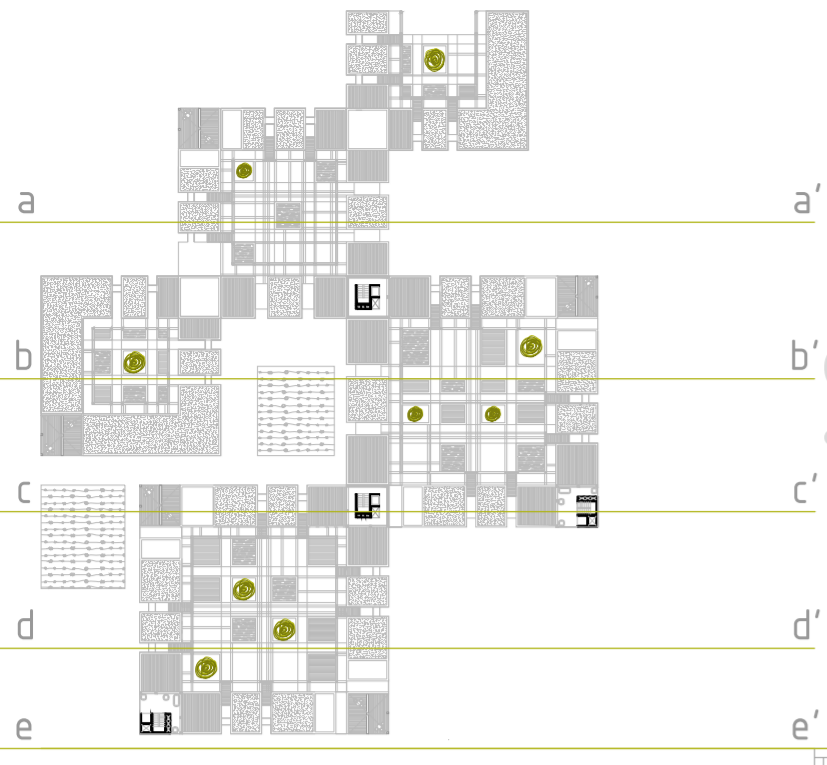
tutor: vicente mirallave izquierdo
construcción: josé miguel rodríguez guerra
estructuras: juan rafael perez cabrera
instalaciones: francisco javier solís robaina

e f r é n
g o n z á l e z
r o d r í g u e z

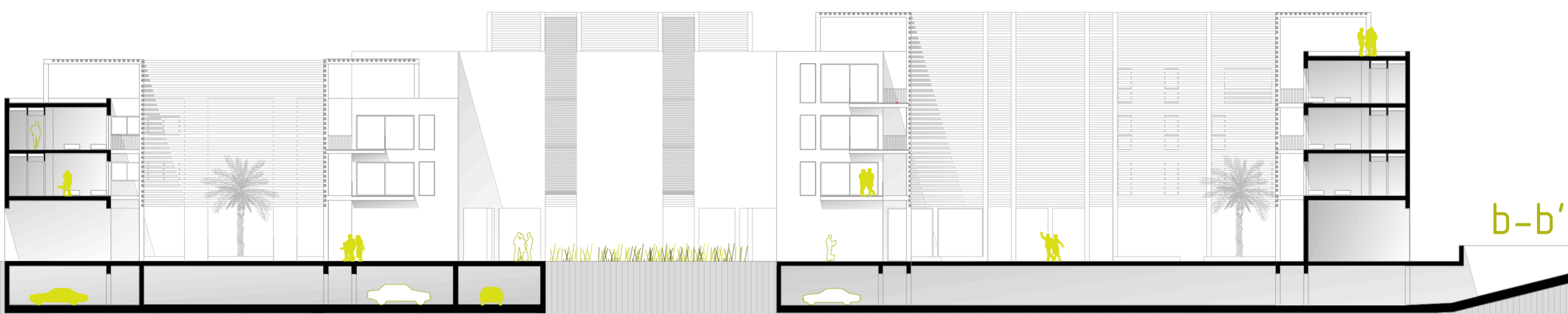


planimetría | 19

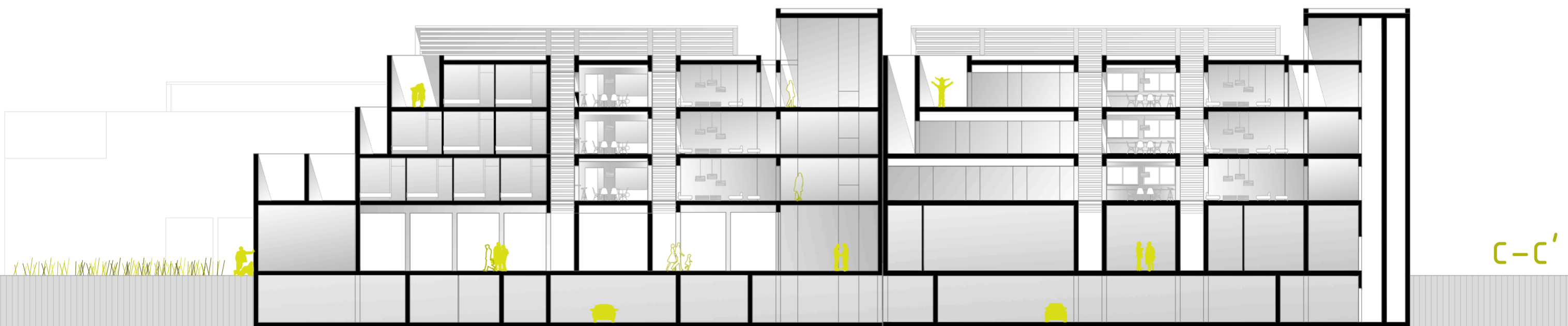
secciones-alzados



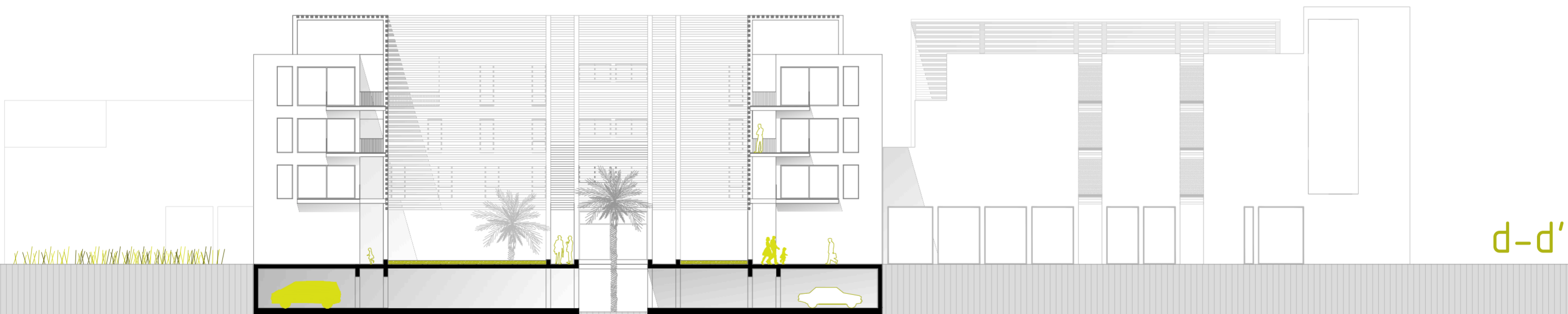
a-a'



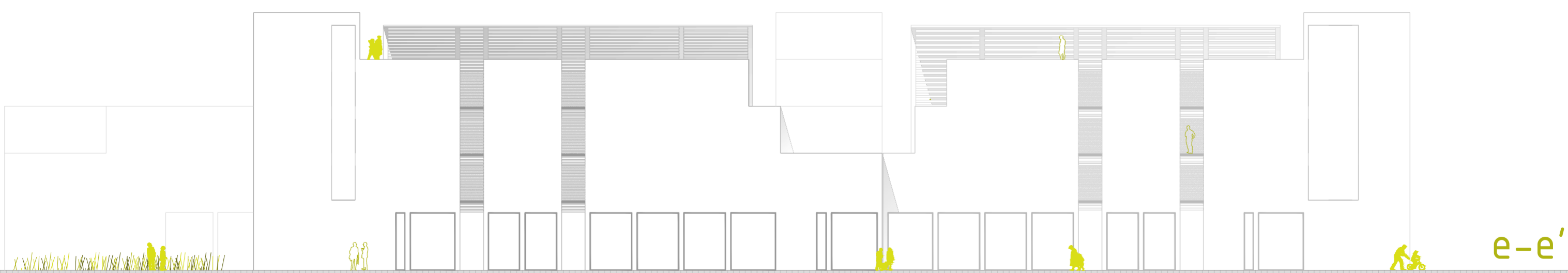
b-b'



c-c'



d-d'



e-e'

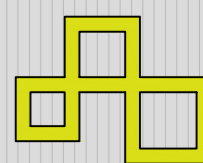
e: 1/250

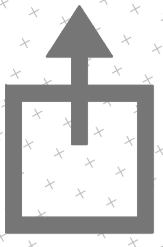
ulpgc | **ea** | dact | M o r | e | c o | n o v
lpgc | pfc | [e]coBARRIO en "Le Palmeraie"
Agadir - Marru[e]cos

2014

tutor: vicente mirallave izquierdo
construcción: josé miguel rodríguez guerra
estructuras: juan rafael perez cabrera
instalaciones: francisco javier solís robaina

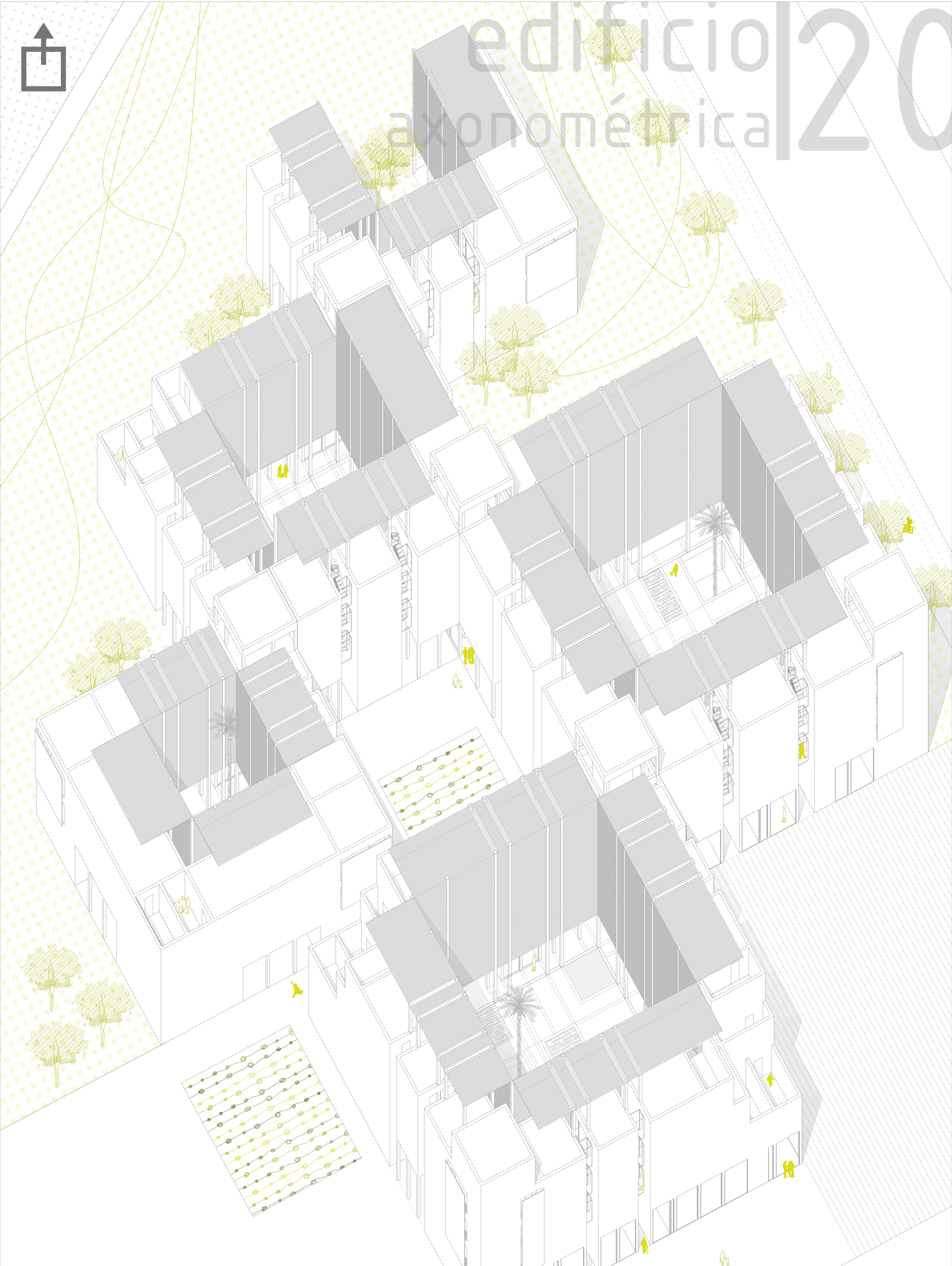
e f r é n
gonzález
rodríguez





edificio | 2014

arquitectónica



e: 1/250

ulpgc | **ea** | dact | M o r [e] c o n o v
lpgc | pfc | [e]coBARRIO en "Le Palmeraie" | 2014

Agadir - Marruecos

2014

tutor: vicente mirallave izquierdo
construcción: josé miguel rodríguez guerra
estructuras: juan rafael perez cabrera
instalaciones: francisco javier solís robaina

e f r é n
gonzález
rodríguez

