



UNIVERSITÀ DEGLI STUDI DI NAPOLI FEDERICO II - DIPARTIMENTO DI SCIENZE SOCIALI

Società **SIU** degli urbanisti

**urbIng out**

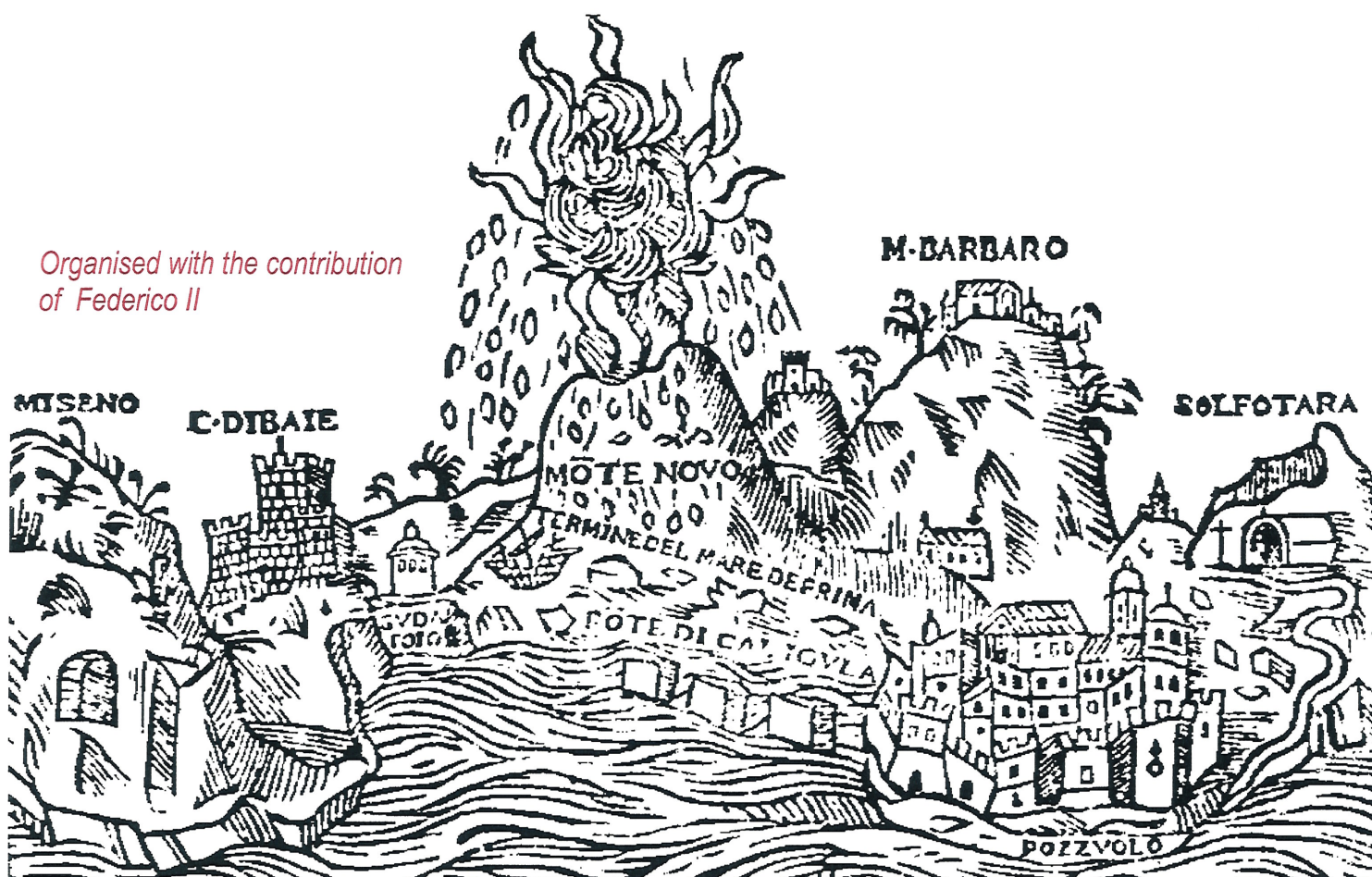
# LANDSCAPE AT RISK

## RECHARGED

EN-ROUTE INTERNATIONAL SEMINAR

Pozzuoli, 7<sup>th</sup>-9<sup>th</sup> June 2021

*Organised with the contribution of Federico II*



# Monday 7th June 2021

---

<https://us02web.zoom.us/j/89920081719?pwd=TVgyRmVjVm92d2ZMaXd6dkt3OUlvQT09>

**ID meeting:** 899 2008 1719

**Passcode:** 710160

## **WELCOME SPEECH [9.00 – 10.00]**

- Matteo Lorito Rector of University of Naples “Federico II”
- Francesco Pirozzi Director of Department of Civil, Environmental and Architectural Engineering, - University of Naples “Federico II”
- Michelangelo Russo Director of Department of Architecture, University of Naples “Federico II”
- Dora Gambardella Director of Department of Social Science, University of Naples “Federico II”
- Juan Manuel Palerm UNISCAPE President
- Tessa Matteini UNISCAPE Director
- Elvira Petroncelli UNISCAPE Delegate for University of Naples “Federico II”

## **KEYNOTE SPEAKER SESSION [10.00 – 13.00]**

Introduction: Michelangelo Russo | Discussant: Dora Francese

- Chao Ren University of Hong Kong | Keynote Title: Climate Change adaptation and environmental planning.
- Christofer Kilburn University College of London, UK | Keynote Title: Living on volcanoes: does landscape shape our perception of volcanic hazard?
- Juan Manuel Palerm Salazar Universidad de Las Palmas de Gran Canaria, Spain | Keynote Title: Observer, imagine, project. Landscape project risk.
- Juanjo Galan Vivas Aalto University, Finland | Keynote Title: Landscape networks for climate change adaptation: mobilizing European communities through the AELCLIC project.

---

## **13.00 - 14.00 - BREAK**

---

## **LANDSCAPES AND NATURAL RISKS [14.00 – 16.30]**

Chair: Marialuce Stanganelli | Discussant: Anna Maria Zaccaria

## **LANDSCAPES AND CLIMATE CHANGE [16.30 – 18.30]**

Chair: Carlo Gerundo | Discussant: Daniele La Rosa

## Tuesday 8th June 2021

---

<https://us02web.zoom.us/j/88558534633?pwd=ZXk2RWlOeG43bHNGOUtUVE9EbCthZz09>

ID meeting: 885 5853 4633

Passcode: 042849

### ***LANDSCAPES AT RISK OF ABANDONMENT [9.00 – 12.00]***

Chair: Francesca Bruni | Discussant: Gilda Berruti

### ***LANDSCAPE AT RISK OF OVEREXPLOITATION AND TOURISM [12.00 – 14.00]***

Chair: Paola De Joanna | Discussant: Fabio Corbisiero

---

### ***14.00 - 15.00 - BREAK***

---

### ***ROUNDTABLE “PERSPECTIVES FOR LANDSCAPES AT RISK IN THE NEW CONTEXT” AND LANDSCAPE AT RISK PRIZE [15.00 – 18.00]***

Chair: Tessa Matteini

**Participants:** Juan Manuel Palerm Salazar, Michelangelo Russo, Dora Francese, Marialuce Stanganelli, Anna Maria Zaccaria, Carlo Gerundo, Daniele La Rosa, Francesca Bruni, Gilda Berruti, Paola De Joanna, Fabio Corbisiero, Bruna Di Palma

## Wednesday 9th June 2021

---

<https://us02web.zoom.us/j/82008889993?pwd=UlpsQnA1bENCL1lYeTJEVTQ4bmtBZz09>

ID riunione: 820 0888 9993

Passcode: 368365

### ***Campania Region Landscape Planning Presentation [10.00 – 12.30]***



## **SCIENTIFIC COORDINATORS**

*Elvira Petroncelli, Marialuce Stanganelli, Carlo Gerundo*

## **SCIENTIFIC COMMITTEE**

Claus-Peter Echter *President, CIVVIH ICOMOS*

Christopher Kilburn, *University College, London UK*

Tana Lascu, *“Ion Mincu” University of Architecture and Urban Planning Bucharest Romania*

Juanjo Galan Vivas, *School of Art, Design and Architecture - Aalto University Finland*

Tessa Matteini, *University of Florence Italy*

Rita Occhiuto, *University of Liège, Belgium*

Anna Laura Palazzo, *University of Rome 3 Italy*

Juan Manuel Palerm Salazar, *Universidad de Las Palmas de Gran Canaria*

Chao Ren, *University of Hong Kong*

Michelangelo Russo *University of Naples Federico II*

Patrizia Tassinari, *University of Bologna*

Daniele Torreggiani, *University of Bologna*

## **ORGANIZING COMMITTEE**

Gilda Berruti *DIARC University of Naples Federico II*

Francesca Bruni, *DICEA University of Naples Federico II*

Fabio Corbisiero, *DISS University of Naples Federico II*

Paola De Joanna, *DIARC University of Naples Federico II*

Dora Francese, *DIARC University of Naples Federico II*

Carlo Gerundo, *DICEA University of Naples Federico II*

Daniele La Rosa *DICAR University of Catania*

Elvira Petroncelli, *DICEA University of Naples Federico II*

Michelangelo Russo *DIARC University of Naples Federico II*

Marialuce Stanganelli, *DIARC University of Naples Federico II*

Anna Maria Zaccaria, *DISS University of Naples Federico II*

## **INFORMATION CONTACTS**

Marina D'Ambrosio ([mardambr@unina.it](mailto:mardambr@unina.it), [infouniscape@unina.it](mailto:infouniscape@unina.it), +39 081 7682322)

Website: [www.uniscape.unina.it](http://www.uniscape.unina.it); [www.uniscape.eu](http://www.uniscape.eu); [www.osservatorioturismo.com](http://www.osservatorioturismo.com)

---

## **DIGITAL EVENT MANAGEMENT CONTACTS**

Alessia R Palermi ([alessiapalermi@pmopenlab.com](mailto:alessiapalermi@pmopenlab.com), +39 3458032220)

Andrea Procopio ([pmopenlab@gmail.com](mailto:pmopenlab@gmail.com), +39 334 266 1650)

Website: [www.pmopenlab.com](http://www.pmopenlab.com)



# LANDSCAPE AT RISK

## RECHARGED

EN-ROUTE INTERNATIONAL SEMINAR

Naples, 7<sup>th</sup>-9<sup>th</sup> June 2021

### Program

---

#### Venue

University "Federico II" – Naples, Italy

The renewed seminar will be held online in June 2021.

#### Topics

The Seminar aims to deal with all the different reasons that could produce alteration, decay, depletion or loss of material and immaterial assets that mark out landscapes. Therefore, risk is also understood as risk of alteration or interruption of the relationship between community and places, which lead to landscape's features creation.

The issue "Landscapes at risk" will be addressed considering its multiple meanings, starting from landscapes affected by natural risks, moving to the ones suffering shrinking or gentrification risk or even overexploitation and/or congestion, up to landscape in transition.

### FINAL PROGRAMME

#### Monday 7<sup>th</sup> June 2021

#### **Welcome Speech** 9.00 – 10.00

Matteo Lorito *Rector of University of Naples "Federico II"*

Francesco Pirozzi *Director of Department of Civil, Environmental and Architectural Engineering, University of Naples "Federico II"*

Michelangelo Russo *Director of Department of Architecture, University of Naples "Federico II"*

Dora Gambardella *Director of Department of Social Science, University of Naples "Federico II"*

Juan Manuel Palerm *UNISCAPE President*

Tessa Matteini *UNISCAPE Director*

Elvira Petroncelli *UNISCAPE Delegate for University of Naples "Federico II"*

## Keynote speaker session 10.00 – 13.00

**Introduction:** Michelangelo Russo

**Discussant:** Dora Francese

### KEYNOTE 1

14-245



Chao Ren *University of Hong Kong*

**Keynote Title:** Climate Change adaptation and environmental planning: an experience from Hong Kong.

**Biography:** Chao Ren is an Associate Professor in The Faculty of Architecture at The University of Hong Kong. She has lectured widely in the leading institutions on topics of environmental design and urban climatic application. Her research interest is Sustainable Urban and Environmental Design and Urban Climatic Application in Urban Planning. She has involved in several governmental research projects in China, Taiwan, The Netherlands and France since 2006. She is an invited contributing author of IPCC AR6 (Chapter on Cities) and an invited member of urban climate expert group by the WMO.

### KEYNOTE 2

145-1030



Christofer Kilburn *University College of London, UK*

**Keynote Title:** Living on volcanoes: does landscape shape our perception of volcanic hazard?

**Biography:** Christopher Kilburn is Professor of Volcanology at University College London (UCL). He has monitored more than two-dozen eruptions in Italy, Cameroon and the West Indies and today specializes in methods for forecasting eruptions and in delivering warnings to non-specialists.



## KEYNOTE 2

11'50 - 12'15



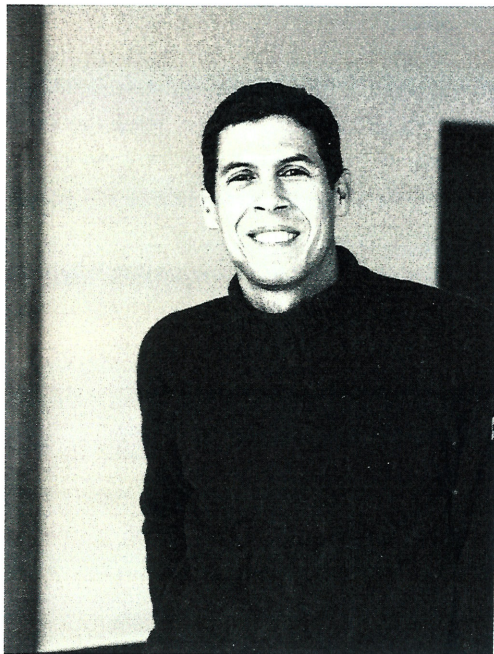
Juan Manuel Palerm Salazar *Universidad de Las Palmas de Gran Canaria, Spain*

**Keynote Title:** Observer, imagine, project. Landscape project risk.

**Biography:** Full Professor and fellow research of Architectural Design at the Faculty of Architecture of the University of Las Palmas. Visiting professor and researcher at the University IUAV of Venice, Politecnico University of Milan. He is President of UNISCAPE, Director of II and III Biennale of Architecture, Art and Landscape of the Canary Islanias well as Director of the Landscape Observatory of the Canaries. Founder and Director with Leopoldo Tabares de Nava y Marin the architectural study "Palerm & Tabares de Nava. Arch.".

## KEYNOTE 4

12'15 - 12'50



Juanjo Galan Vivas *Coordinator of AELCLIC project (Adaptation of European Landscape to Climate Change)*

**Keynote Title:** Landscape networks for climate change adaptation: activating local communities through the AELCLIC project.

**Biography:** Juanjo Galan has been Associate Professor at Aalto University and Lecturer at the Polytechnic University of Valencia. His research focuses on Landscape Planning, Sustainable Development, and in a broader sense, in the intersections between social and ecological systems. As leader and coordinator of the AELCLIC project, he has been working since the year 2018 in the generation of local networks for the adaptation of European landscapes to Climate Change. Dr. Galan coordinated the Sierra Calderona Strategic Plan (2013-2014) and since the year 2017, he was the promoter and Chair of the Landscape Observatory of Finland.



13.00 – 14.00 Break

### **Landscapes and Natural Risks** 14.00 – 16.30

This session analyzes landscape affected by natural risks, techniques and actions to prevent/mitigate them with respect for landscape features, the way risk influences everyday life and the population-resources relationship underpinning landscape creation.

**Chair:** Marialuce Stanganelli

**Discussant:** Anna Maria Zaccaria

1. ***Evolution of a seismic medieval city. The case of L'Aquila***  
Fabio Andreassi, Cinzia Barbara Bellone
2. ***Places at risk called home. Rethinking the reconstruction in Ischia***  
Marica Castigliano, Fabio di Iorio, Federica Vingelli
3. ***The role of experiential knowledge in risk management of coastal landscapes. A case study in the Mediterranean Basin***  
Giulia Motta Zanin
4. ***Insights on risk perception: the case of Friuli Venezia Giulia***  
Giorgia Bressan, Andrea Guaran, Gian Pietro Zaccomer
5. ***The post-disaster temporary landscape. Reflecting on housing and tourism practices in the crater of central Italy***  
Sara Cipolletti, Alessandro Gabbianelli
6. ***The complex thinking to avoid the "reconstruction risk". A design methodological proposal for Inner Areas***  
Giovangiuseppe Vannelli
7. ***Advanced planning for urban landscape enhancement***  
Roberto De Lotto, Caterina Pietra, Elisabetta M. Venco
8. ***Elements of integration of Regional Landscape Planning with Risk Management Planning in Abruzzo***  
Donato Di Ludovico

### **Landscapes and Climate Change** 16.30 – 18.30

This session presents contributes investigating how to ensure the reduction of risk by climate change with the landscape preservation and promotion. It will host studies and researches concerning methodological improvements or new modelling approaches to support strategies, measures or actions for the mitigation and adaptation of rural and urban landscapes. Moreover case studies and experiences on urban planning and design, dealing with nature-driven urban and landscape regeneration will be presented.

**Chair:** Carlo Gerundo

**Discussant:** Daniele La Rosa

1. ***The end of seaside resorts?***  
Philippe Clairay
2. ***Planning policies and instruments for climate change adaptation and mitigation in Mediterranean contexts***  
Viviana Pappalardo, Daniele La Rosa
3. ***Water: a soft infrastructure for the city of Laterza***  
Maria Pone, Margherita Ermani, Francesca Melissano, Edoardo Fabbri, Luca Petroni, Francesco Scillieri
4. ***Spatial Cost Benefit Analysis in flood risk management: evidence from a case study in Italy***  
Francesca Torrieri, Marco Rossitti
5. ***Small Rivers and Landscape. Nature-based solutions to mitigate flood risk***  
Malena Magliocchetti, Valentina Adinolfi, Giacomo Viccione, Michele Grimaldi, Isidoro Fasolino
6. ***Post-communist urban landscape at risk – challenge and innovation***  
Tana Nicoleta Lascu, Cristina Victoria Ochinciuc

**Tuesday 8<sup>th</sup> June 2021**

### **Landscapes at Risk of Abandonment 9.00 – 12.00**

This session investigates the effects of social changes on landscapes. Given that landscape is the result of man-land relationship, one wonders which are the effects on landscape when some phenomena occurs, such as a drastic depopulation or a rapid replacement of native by non-native people, due to gentrification or immigration fluxes, and how these changes could be managed without producing modification on landscape features.

**Chair:** Francesca Bruni

**Discussant:** Gilda Berruti

1. ***Genesis and development of (un) populated landscapes. Analysis and comparison between the Cilento National Park and the Province of Soria***  
Maira Grazia Cianci, Francesca Paola Mondelli, Marta Rabazo Martin
2. ***A way for the Italian inner area Montagna Materana. Rethink the abandonment from Craco***  
Angela D'Agostino, Maria Cerreta, Giovangiuseppe Vannelli, Piero Zizzania
3. ***Which model of landscape relaunch. The Umbrian case of Postignano***  
Paola De Salvo, Marco Pizzi, Cristina Burini
4. ***The toxic sublime of the industrial landscape. The aesthetics of the city of Seraing***  
Marianna Sergio
5. ***On the relations between landscape and production. The case study of Rufoli in Salerno***  
Guglielmo Avallone

6. ***The landscape of the Amalfi Coast: an endangered paradise***  
Giorgia De Pasquale, Lorenzo Nofroni, Serena Savelli
7. ***Social ecology and traditional landscape enhancement. Some issues from a case study in the Gorizia Karst***  
Alessandra Marin, Alfredo Altobelli
8. ***Designing the margins: a strategy for Lioni***  
Chiara Barbieri, Giovanni Zucchi
9. ***Landscapes at risk of peripheralization. A methodological framework for risk analysis to support planning strategies***  
Alessandra Marra, Roberto Gerundo
10. ***Beyond the unacknowledged coastline. Assessing the potential of out-of-map Mediterranean settlements***  
Stefanos Antoniadis

### **Landscape at Risk of Overexploitation and Tourism 12.00 – 14.00**

This session handles the environments where landscape exploitation levels maxed-out saturation, such as landscapes where resources enjoyment is mainly based on an intensive consumption pattern and on the appropriation for commercial purpose, which lead to jeopardize the resources itself, as mass tourism does.

**Chair:** Paola De Joanna

**Discussant:** Fabio Corbisiero

1. ***Periurban landscapes, vulnerabilities and potentials for regeneration***  
Anna Attademo, Maria Gabriella Errico
2. ***Collaborative governance for coastal landscape integrated management. The Agro Pontino Coast Contract***  
Stefano Magaudda, Serena Muccitelli, Carolina Pozzi, Cristina Palazzini
3. ***Tourism in the Phlegraean Fields. Public perception and framing agenda of territorial public initiatives***  
Salvatore Monaco, Carmine Urciuoli
4. ***The Heritage of the Apuseni Mountains – a Magnificent Landscape at Risk***  
Elena Codina Duşoiu
5. ***Environmental Hazard and Resource Use: a comparison Between Volcanic Landscape of Vesuvius and Stromboli***  
Maurizio Conte, Dora Francese, Giuseppe Vaccaro
6. ***Archeological resources: a blended landscape with various hazard factors. The case of Bacoli***  
Luca Buoninconti, Paola De Joanna, Dora Francese

14.00 – 15.00 Break



**Roundtable “Perspectives for Landscapes at Risk in the new context” and  
Landscape at Risk Prize 15.00 – 18.00**

**Chair:** Tessa Matteini

**Participants:** Juan Manuel Palerm Salazar, Michelangelo Russo, Dora Francese, Marialuce Stanganelli, Anna Maria Zaccaria, Carlo Gerundo, Daniele La Rosa, Francesca Bruni, Gilda Berruti, Paola De Joanna, Fabio Corbisiero, Bruna Di Palma

**Wednesday 9<sup>th</sup> June 2021**

**Campania Region Landscape Planning Presentation 10.00 – 12.30**

